



PRESENTS

Quilt designed by Mark Lipinski
Quilt size: 72" x 72"



I Can Fly

Fabrics by
Mark Lipinski
Pickle Road Studios, LLC



makower uk[®]

www.andoverfabrics.com

I Can Fly Quilt

Introducing Andover Fabrics new collection: *I Can Fly* by Mark Lipinski, Pickle Road Studios, LLC
Quilt designed by Mark Lipinski

Fabric Requirements

		Yardage	Green	Yellow
Fabric A	blocks	fat ¼ yard	7067-G	7067-Y
Fabric B	borders	2 yards	7068-G	7068-Y
Fabric C	blocks	1¼ yards	7069-GB	7069-YR
Fabric D	blocks	½ yard	7070-GT	7070-YG
*Fabric E	borders	1 yard	7072-G	7072-Y
Fabric F	blocks	1 yard	7073-GM	7073-YM
Fabric G	blocks	½ yard	7073-GP	7073-YR
Fabric H	blocks	⅜ yard	7073-GT	7073-YO
Fabric I	blocks	1½ yards	7074-GT	7074-YE
Fabric J	center	½ yard	7075-G	7073-Y
Fabric K	rabbit	8" x 8"	Wh. Lies	Flash
Fabric L	rabbit	fat ⅛ yard	Laguna	In. Summer
Fabric M	rabbit	fat ⅛ yard	Galaxy	Lacquer
Fabric N	eyes	4" x 4"	Ripple	Haystack
Backing		4¾ yards	7067-G	7067-Y

*includes binding
also needed: black 3" x 3"
black embroidery floss

Quilt finishes 72" x 72"
20 Four-Patch Blocks: 5" x 5"
4 Framed Blocks: 5" x 5"
24 Square-in-a-Square Blocks: 5" x 5"
8 Pinwheel Blocks: 4" x 4"

Google-eyed bunnies, bears, and other creatures will keep your little one smiling. The quilt is just the right size to hang on a wall behind a crib or big-kid bed. The traditional blocks, simply made with quick techniques, surround the fused bunny appliqué in a series of nine borders. The border stripe and other novelty prints are presented in two fanciful colorways, sure to please any child.

Cutting Directions

Note: Read assembly directions before cutting patches. All measurements are cut sizes and include ¼" seam allowances. A fat ⅛ is a 9" x 20"-22" cut of fabric. A fat ¼ is an 18" x 20"-22" cut. Borders are cut the exact lengths required plus ¼" seam allowances. WOF designates the width of fabric from selvedge to selvedge (approximately 42" wide).

- Fabric A** Fussy-cut (4) squares 4½" x 4½" (Framed Blocks)
- Fabric B** Fussy-cut (2) borders 5½" x 64½", cut lengthwise (top/bottom border #8)
Fussy-cut (2) borders 5½" x 54½", cut lengthwise (side border #8)
Fussy-cut (2) borders 5½" x 43½" (t/b border #5)
Fussy-cut (2) borders 5½" x 33½" (side border #5)
- Fabric C** Cut (4) rectangles 3½" x 5½" (border #6)
Cut (4) rectangles 3½" x 4½" (border #2)
Cut (64) squares 4½" x 4½" (Flying Geese Blocks)
- Fabric D** Cut (8) rectangles 2" x 4½" (border #2)
Cut (64) squares 3" x 3" (Square-in-a-Square Blocks)
- Fabric E** Note: All Fabric E strips are cut crosswise and pieced as needed
Cut (8) strips 2½" x WOF for binding
Cut (2) borders 1" x 54½" (t/b border #7)
Cut (2) borders 1" x 53½" (side border #7)
Cut (2) borders 1" x 23½" (t/b border #3))
Cut (2) borders 1" x 22½" (side border #3))
Cut (8) strips 1" x 5½" (Framed Blocks)
Cut (8) strips 1" x 4½" (Framed Blocks)

I Can Fly Quilt

Cutting Directions *continued*

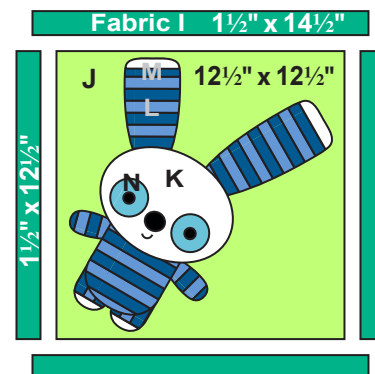
Fabric F	Cut (16) squares 5½" x 5½" (Square-in-a-Square Blocks) Cut (8) squares 4½" x 4½" (border #2) Cut (48) squares 3" x 3" (Pinwheel & Square-in-a-Square Blocks)	Fabric K	Cut (1) bunny head Cut (2) bunny feet Cut (2) bunny ear tips
Fabric G	Cut (16) squares 3" x 3" (Pinwheel Blocks) Cut (3) strips 3" x WOF (Four-Patch Blocks)	Fabric L	Cut 6 strips 1" x 20" (for bunny body)
Fabric H	Cut (3) strips 3" x WOF (Four-Patch Blocks)	Fabric M	Cut 6 strips 1" x 20" (for bunny body)
Fabric I	Cut (8) squares 5½" x 5½" (Square-in-a-Square Blocks) Cut (4) rectangles 3½" x 5½" (border #4) Cut (32) rectangles 4½" x 8½" (Flying Geese Blocks) Cut (2) strips 1½" x 14½" (border #1) Cut (2) strips 1½" x 12½" (border #1)	Fabric N	Cut (2) bunny eyes
Fabric J	Cut (1) square 12½" x 12½" (appliqué background) Cut (8) squares 5½" x 5½" (border #6)	Black Fabric	Cut (1) nose and (2) eye pupils
		Backing	Cut (2) panels 40" x 80", pieced to fit quilt top with overlap on all sides

Making the Blocks

- Center Block** Sew Fabric I 12½" strips (border 1) to the sides of the Fabric J 12½" square. Press seam allowances away from the square. Sew Fabric I 14½" strips to the top and bottom. Press.

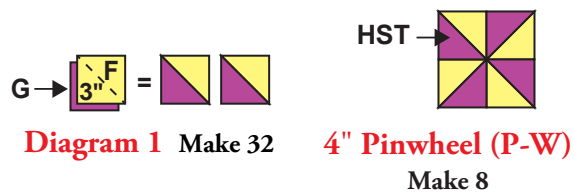
The bunny's body parts are cut from a pieced stripe. Join 6 Fabric L and Fabric M 1" x 20" strips alternately. Press seam allowances in one direction.

Trace the bunny motifs onto the paper side of paper-backed fusible web. Arrange the body, legs, arm, and ear patches on the wrong side of the pieced stripe, turning them as you desire. Following manufacturer's instructions, fuse the patterns to the pieced stripe. Cut out parts on the drawn lines. Likewise, fuse and cut other bunny patches from appropriate fabrics, including the black nose and pupils. Fuse each patch to the Fabric J square, following manufacturer's instructions. Finish the edges with a decorative machine stitch using contrasting thread, or use an invisible thread with a blind appliqué machine stitch. Embroider the mouth.

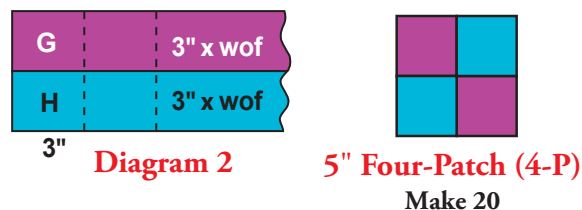


Center Block

- Pinwheel Blocks** Use your favorite method to make half-square triangles (HST) that finish 2" square, or follow these directions. Draw a diagonal line on the wrong side of 16 Fabric F 3" squares (Diagram 1). Place a marked square on a Fabric G square, right sides together. Sew ¼" seam on each side of the marked line; cut apart on the marked line. Press open. Trim the squares to 2½". Make 32 total HST. Referring to the Pinwheel Block Diagram, join 4 HST to make a block. Make a total of 8.

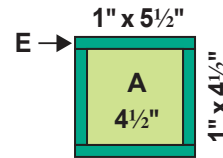


- Four-Patch Blocks** Sew Fabric G and Fabric H 3" x WOF strips together (Diagram 2). Make 3 bands like this. Cut a total of 40 segments each 3" wide from the bands. (Hint: Make another band if necessary.) Join 2 segments to make a block. Make 20.



I Can Fly Quilt

4. Framed Blocks Sew Fabric E 1" x 4½" strips to sides of a Fabric A 4½" square. Sew 5½" strips to top and bottom. Make 4 blocks.



5" Framed Block (F-B) Make 4

5. Square-in-a-Square Blocks Draw a diagonal line on the wrong side of 32 Fabric F 3" squares. Referring to Diagram 3, place a marked square on a Fabric I 5½" square, right sides together, aligning raw edges at the corner. Stitch on the drawn line; trim away and discard excess fabric. Press open. Repeat on the opposite corner, watching orientation of the sewing. Repeat on the remaining corners (Diagram 4). Make 8 Square-in-a-Square Blocks like this. Make 16 blocks using Fabric F 5½" squares and Fabric D 3" squares.

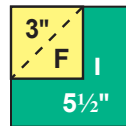
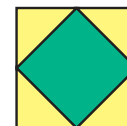


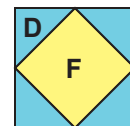
Diagram 3



Diagram 4



Make 8



Make 16

5" Square-in-a-Square (S-S)

6. Flying Geese Units Draw a diagonal line on the wrong side of each Fabric C 4½" square. Place a marked square on one end of a Fabric I 4½" x 8½" rectangle, right sides together (Diagram 5). Sew on the marked line; trim away and discard excess fabric. Press open. Repeat this process on the opposite end of the rectangle to make a Flying Geese Unit (Diagram 6). Make 32 total.

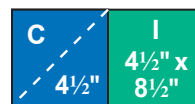


Diagram 5



Diagram 6



Make 32

Flying Geese (F-G)

Assembling the Quilt

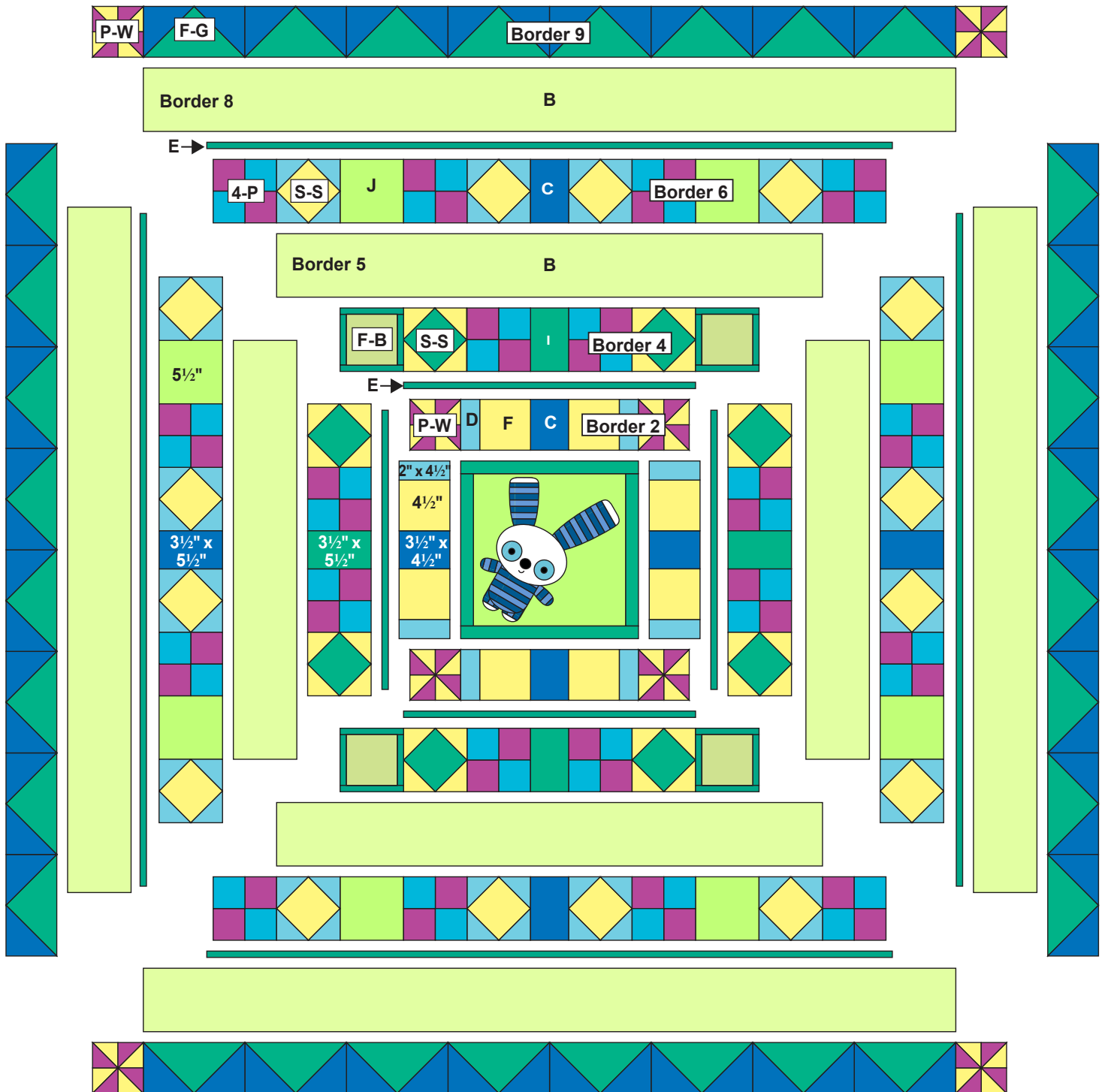
- Border 2** Refer to the Quilt Diagram for the following steps. On a design wall or flat surface, arrange 2 Fabric D 2" x 4½" rectangles, 2 Fabric F 4½" squares, and 1 Fabric C 3½" x 4½" patch to make a border. Make 4. Sew borders to sides of the quilt. Sew a Pinwheel Block to ends of remaining borders; sew to the top and bottom.
- Border 3** Sew the Fabric E 22½" borders to the sides, and then sew Fabric E 23½" borders to the top and bottom.
- Border 4** Arrange 2 Square-in-a-Square Blocks (with Fabric I centers), 2 Four-Patch Blocks, and 1 Fabric I 3½" x 5½" patch. Rotate the Four-Patch Blocks as shown. Join blocks and patches to make a border. Make 4. Sew borders to the sides. Sew a Framed Block to ends of remaining borders; sew to the top and bottom.
- Border 5** Sew Fabric B 33½" borders to the sides, noting the orientation of the novelty print. Sew 43½" borders to the top and bottom.
- Border 6** Arrange 2 Four-Patch Blocks, 4 Square-in-a-Square Blocks (with Fabric F centers), 2 Fabric J 5½" squares, and 1 Fabric C 3½" x 5½" patch in the order shown. Turn Four-Patch Blocks correctly. Join the blocks to make a border. Make 4. Sew to the sides. Sew a Four-Patch to the ends of remaining borders; sew to the top and bottom.

- Border 7** Sew Fabric E 53½" borders to the sides. Sew Fabric E 54½" borders to the top and bottom.
- Border 8** Sew Fabric B 54½" borders to the sides. Sew 64½" borders to the top and bottom.
- Border 9** Join 8 Flying Geese Units side by side to make a border. Make 4. Sew borders to the sides, noting orientation. Sew a Pinwheel Block to ends of remaining borders; sew to the top and bottom.

Finishing the Quilt

- Layer the quilt with batting and backing and baste. Quilt in the ditch around borders and block patches. Quilt around the printed motifs in the blocks and borders. Outline quilt around the bunny appliqué. Quilt plain squares and other patches as you wish. Bind to finish the quilt.

I Can Fly Quilt



Quilt Diagram

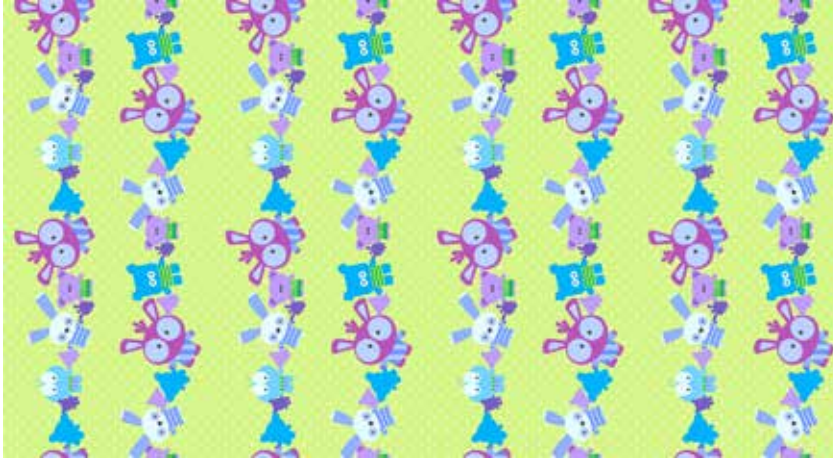
I Can Fly

by Mark Lipinski
Pickle Road Studios, LLC

*Blend with
Textured Solids*



7067-G*



7068-G*



A-T-White Lies*



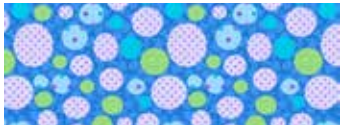
A-T-Ripple*



A-T-Laguna*



A-T-Galaxy*



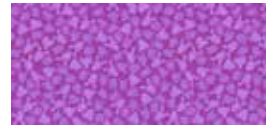
7069-GB*



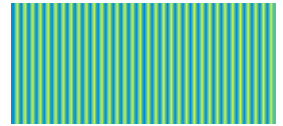
7071-GL



7073-G



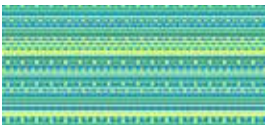
7073-GP*



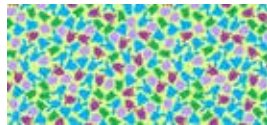
7074-GT*



7070-GT*



7072-G*



7073-GM*



7073-GT*



7075-G*

*Blend with
Textured Solids*



7067-Y



7068-Y



A-T-Flash



A-T-Haystack



A-T-Indian Summer



A-T-Mandarin



7069-YR



7071-YG



7073-Y



7073-YM



7074-YE



7070-YG



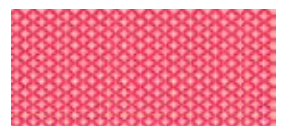
7072-Y



7073-YO



7073-YR



7075-YE