

Introducing Andover Fabrics new collection:
Variable Stars from the International Quilt Study Center

IQSC Variable Stars



Quilt designed by
Jean Ann Wright
Quilt size: 77" x 88"



1384 Broadway
New York, NY 10018
(800) 223-5678
www.andoverfabrics.com

Variable Stars Quilt

Introducing Andover Fabrics new collection: Variable Stars from the International Quilt Study Center
Quilt designed by Jean Ann Wright

The International Quilt Study Center in Lincoln, Neb., is the home of an impressive collection of more than 2,300 quilts—950 of them were donated by well-known quilt collectors Robert and Ardis James. That donation in 1997 influenced the creation of the Center, which is now housed in a beautiful new building. The prints in this collection reflect some of the fabrics found in the donated quilts.

Quilt finishes 77" x 88"
12 pieced blocks 17" x 17"

Fabric Requirements

		Yardage	Brown
Fabric A	inner border and sashing	1¼ yards	5051-P
Fabric B	blocks and outer border	2⅓ yards	5052-N
Fabric C*	blocks	1⅛ yards	5053-G
Fabric D	blocks	½ yard	5054-E
Fabric E	blocks	⅔ yard	5055-Y
Fabric F	blocks	⅔ yard	5056-N
Fabric G	blocks	⅔ yard	5057-N
Fabric H	blocks and center border	1⅔ yards	3945-L
Fabric I	blocks	⅝ yard	4068-R
Fabric J	backing	5½ yards	5057-N

*includes binding

Cutting Directions

Note: Border measurements are given in the exact lengths required, including ¼" seam allowances. WOF designates the width of fabric from selvedge to selvedge (approximately 42" wide).

Fabric A Cut (10) strips 3½" x WOF, pieced together to make the following: 4 border/sashing 3½" x 68½", 2 borders 3½" x 63½"

Fabric B Cut (2) strips 5½" x 78½" along the length of the fabric
Cut (6) strips 5½" across the remaining width, pieced together to make (2) 5½" x 77½" strips
Cut (6) squares 9⅜" x 9⅜" and cut in half once diagonally to make 12 triangles

Fabric C Cut (12) squares 4½" x 4½" squares
Cut (9) strips 2½" x WOF for binding

Fabric D Cut (12) squares 5¼" x 5¼" and cut twice diagonally to make 48 triangles

Fabric E Cut (6) squares 9⅜" x 9⅜" and cut in half once diagonally to make 12 triangles

Fabric F Cut (6) squares 9⅜" x 9⅜" and cut in half once diagonally to make 12 triangles

Fabric G Cut (6) squares 9⅜" x 9⅜" and cut in half once diagonally to make 12 triangles

Fabric H Cut (48) squares 4½" x 4½" for block corners
Cut (12) squares 5¼" x 5¼" and cut twice diagonally to make 48 triangles
Cut (7) strips 2½" x WOF, pieced together to make the following: 2 borders 2½" x 74½", 2 borders 2½" x 67½"

Fabric I Cut (24) squares 5¼" x 5¼" and cut twice diagonally to make 96 triangles

Backing Cut (2) panels 42" x 95", pieced to fit quilt top with 4" overlap on all sides

Variable Stars Quilt

Making the Variable Star Block

1. Refer to Diagram 1 for all piecing.
2. To complete one Variable Star block, sew a fabric D triangle to a fabric I triangle. Press seam allowance toward fabric I triangle. Repeat to make four D-I units.
3. Repeat step 2 with one each fabric H and fabric I triangle. Press seam allowance toward fabric I triangle. Repeat to make four H-I units.
4. Join one each D-I and H-I unit to make a side unit. Press seam allowance to one side. Repeat to make four side units.
5. Sew a side unit to opposite sides of a fabric C square to make the center row. Press seam allowances toward fabric C square.
6. Sew a fabric H square to the fabric I sides of a side unit to make a row. Press seam allowances toward fabric H squares. Repeat to make a second row. Sew these rows to opposite sides of the center row to complete the block center. Press seam allowances away from the center row.
7. Select one each fabric B, E, F and G triangle. Sew these triangles to the sides of the block center to complete one block, referring to Diagram 2 for positioning. Press seam allowances toward the triangles.
8. Repeat steps 2–7 to complete 12 Variable Star blocks.

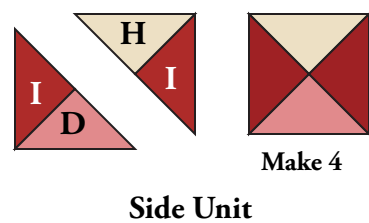


Diagram 1

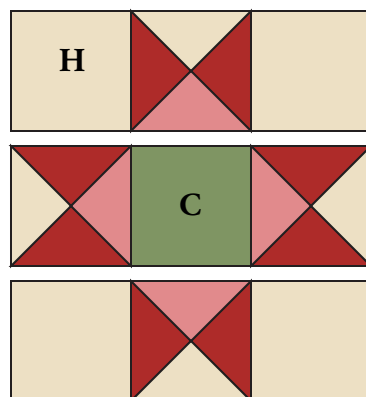


Diagram 2

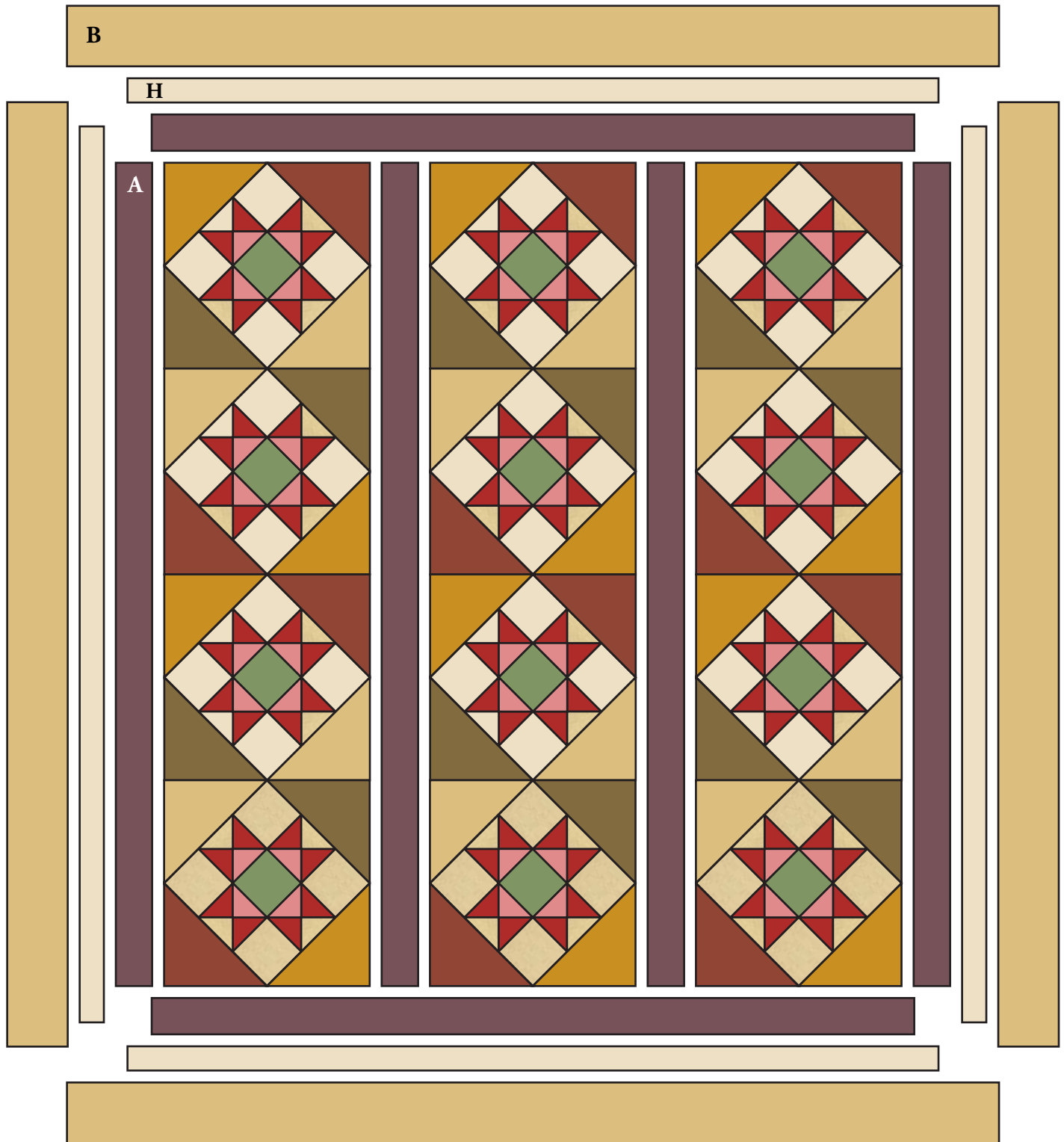
Quilt Assembly

9. Refer to the Quilt Diagram throughout the assembly.
10. Join four Variable Star blocks to make a vertical row, being careful of positioning of the B, G, F and E triangles when joining. Press seam allowances in one direction. Repeat to make three identical vertical rows.
11. Join the vertical rows with the four fabric A border/sashing strips. Press seam allowances toward fabric A strips.
12. Sew the 63½" fabric A border strips to the top and bottom of the pieced center. Press seam allowances toward fabric A strips.
13. Sew the 74½" fabric H border strips to opposite long sides and the 67½" fabric H border strips to the top and bottom of the pieced center. Press seam allowances toward the fabric H strips.
14. Sew the 78½" fabric B border strips to opposite long sides and the 77½" fabric B border strips to the top and bottom of the pieced center. Press seam allowances toward fabric B strips.

Finishing the Quilt

15. Layer quilt top with batting and backing. Quilt in the ditch of seams and as desired. Bind to finish the quilt.

Variable Stars Quilt



Quilt Diagram

1384 Broadway
 New York, NY 10018
 (800) 223-5678
 www.andoverfabrics.com

IQSC Variable Stars

International Quilt Study Center



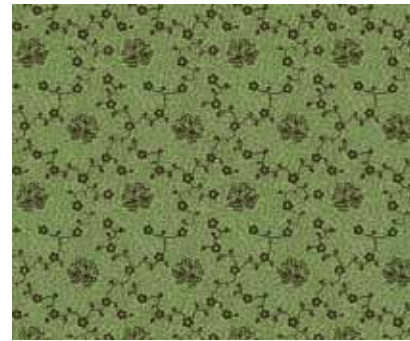
makower uk[®]



5051-N



5052-N*



5053-G*



3945-L*



5054-N



5055-N



4068-R*



5056-N*



5057-N*



4268-K



5051-P*



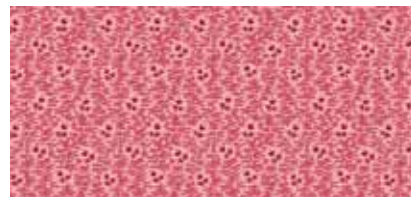
5052-L



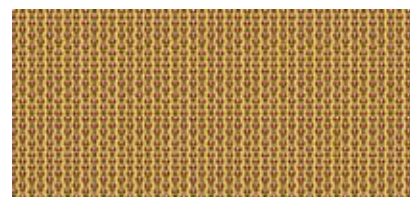
5053-L



3941-L



5054-E*



5055-Y*



5056-L



5057-B



4071-B

*Indicates fabric used in quilt pattern. Fabrics shown are 25% of actual size.

Free Pattern Download Available at www.andoverfabrics.com