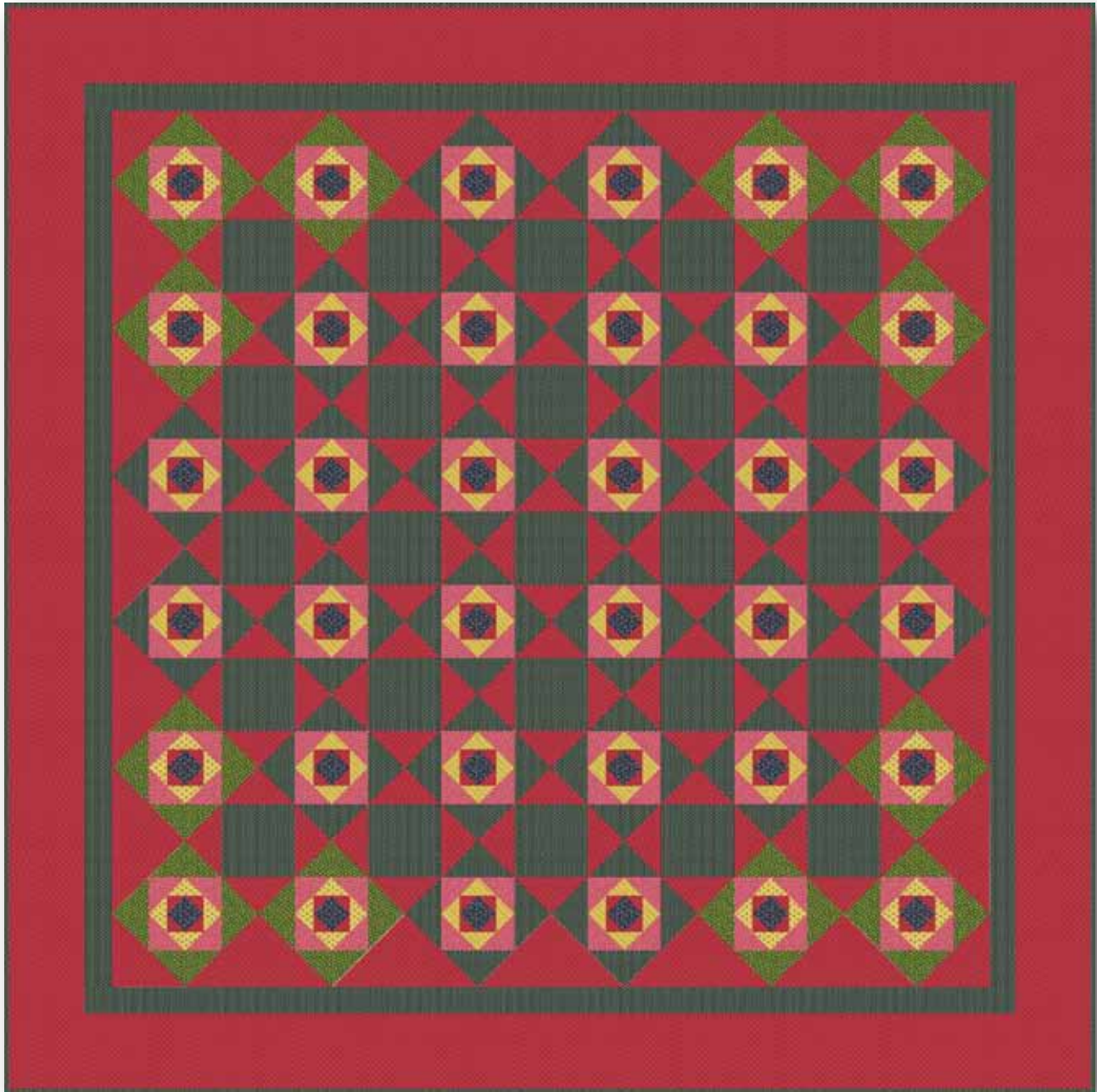


# SQUARE IN SQUARE

## ANTIQUE QUILT



Quilt size: 84" x 84"

*Fabrics by Kathy Hall with Jo Morton*  
*for the International*  
**Quilt Study Center**

Under License to Andover Fabrics from The International  
Quilt Study Center, University of Nebraska - Lincoln



**makower uk**<sup>®</sup>

1384 Broadway  
New York, NY 10018  
(800) 223-5678

[www.andoverfabrics.com](http://www.andoverfabrics.com)

5/31/12

# Square-in-Square Antique Quilt

Introducing Andover Fabrics new collection: Square-in-Square by Kathy Hall with Jo Morton for the International Quilt Study Center

## Fabric Requirements

		Yardage	
Fabric A	blocks X & Y	1 yard	5887-R
Fabric B	block X	½ yard	5888-RG
*Fabric C	blocks X & Y	¼ yard	5889-RB
Fabric D	block Y	½ yard	5886-RY
**Fabric E	blocks, border	3¾ yards	5891-RB
Fabric F	blocks, border	4½ yards	5892-R
Fabric G	block X	¼ yard	5890-RY
*Backing		7½ yards	5889-RB
**includes binding			

Quilt finishes 84" x 84"  
 12 Block X: 8" x 8"  
 24 Block Y: 8" x 8"  
 25 Block Z: 8" x 8"

*Honor our quilting foremothers when you replicate this lovely 19th-century quilt with fabrics based on the early quilt. Your version will bring a quiet charm and feeling of warmth to any home. The subtle change in color in the corner blocks adds an unexpected delight.*

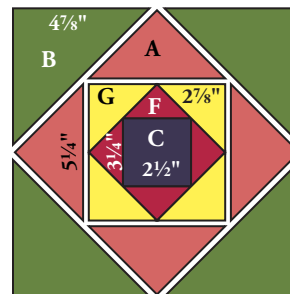
## Cutting Directions

**Note:** All measurements are cut sizes and include ¼" seam allowances. Borders are cut the exact lengths required plus ¼" seam allowances. WOF designates the width of fabric from selvedge to selvedge (approximately 42" wide).

- Fabric A** Cut (36) squares 5¼" x 5¼", cut in half diagonally twice to make 144 quarter-square triangles
- Fabric B** Cut (24) squares 4⅞" x 4⅞", cut in half diagonally to make 48 half-square triangles
- Fabric C** Cut (36) squares 2½" x 2½"
- Fabric D** Cut (48) squares 2⅞" x 2⅞", cut in half diagonally to make 96 half-square triangles
- Fabric E** Cut (8) strips 2½" x WOF, pieced to make the following:  
 (2) borders 2½" x 72½" and (2) borders 2½" x 68½"  
 Cut (9) strips 2½" x WOF for binding  
 Cut (25) squares 8½" x 8½"  
 Cut (48) squares 4⅞" x 4⅞", cut in half diagonally to make 96 half-square triangles
- Fabric F** Cut (2) borders 6½" x 84½", cut lengthwise  
 Cut (2) borders 6½" x 72½", cut lengthwise  
 Cut (5) squares 12⅝" x 12⅝", cut in half diagonally twice to make 20 quarter-square triangles  
 Cut (2) squares 6⅝" x 6⅝", cut in half diagonally to make 4 half-square triangles  
 Cut (100) squares 4½" x 4½"  
 Cut (36) squares 3¼" x 3¼", cut in half diagonally twice to make 144 quarter-square triangles
- Fabric G** Cut (24) squares 2⅞" x 2⅞", cut in half diagonally to make 48 half-square triangles
- Backing** Cut (3) panels 31" x 90", pieced to fit quilt top with overlap on all sides

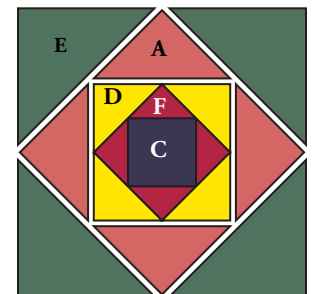
## Making and Assembling the Quilt

- Referring to the Block X diagram, sew Fabric F ¾" quarter-square triangles to the sides of each Fabric C 2½" square. Press seam allowances away from the center. Sew Fabric G ⅞" half-square triangles to the block. Add Fabric A and Fabric B triangles to the sides to make a block. Make 12 Block X's.
- Referring to the Block Y diagram, follow the directions above to make the blocks. Use fabric D half-square triangles in place of fabric G's. In place of the B triangles, sew Fabric E half-square triangles to the outer corners. Make 24 Block Y's.



Make 12

Block X



Make 24

Block Y

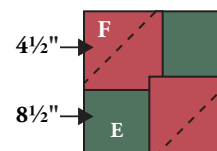


Diagram 1

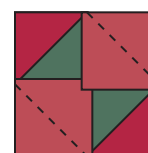
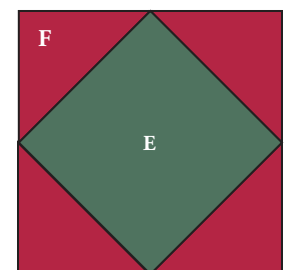


Diagram 2



Make 25

Block Z

# Square-in-Square Antique Quilt

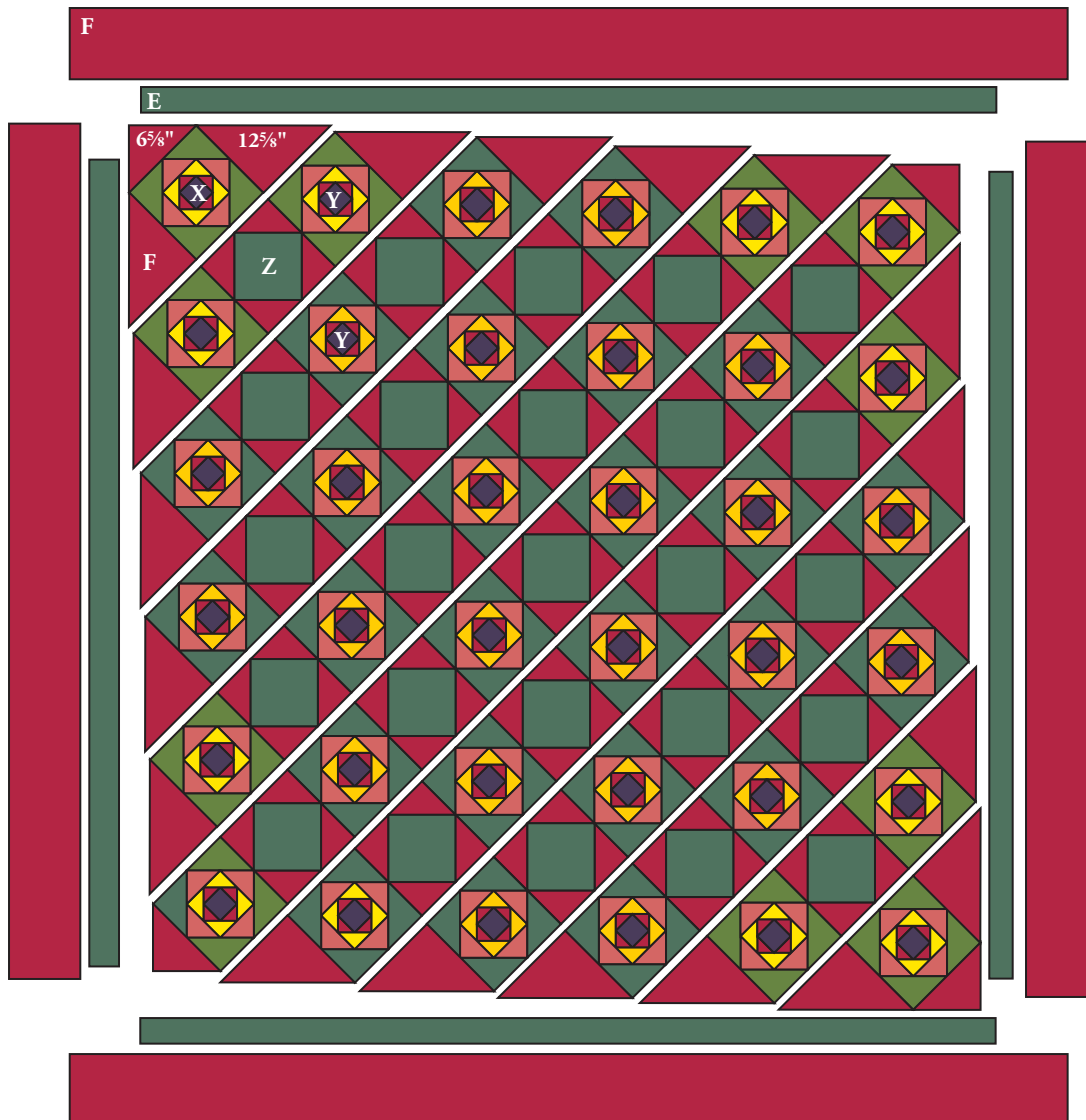
- Block Z's are made with quick stitch-and-flip piecing methods. Draw a diagonal line on the wrong side of each Fabric F  $4\frac{1}{2}$ " square. Referring to Diagram 1, place a marked square on a Fabric E  $8\frac{1}{2}$ " square, right sides together, aligning raw edges at the corner. Stitch on the drawn line; trim away and discard excess fabric. Press open. Repeat on each of the 4 corners (Diagram 2). Make 25 block Z.
- Referring to the Quilt Diagram, sew Fabric F  $12\frac{5}{8}$ " quarter-square triangles to opposite sides of a Block X, noting orientation of the triangles, to make diagonal row 1. Press seam allowances away from Block X. For row 2, sew Block X's to opposite sides of a Block Z. Sew a Fabric F quarter-square triangle to each end, again rotating the triangles as needed.

Press seam allowances away from the Block X's. Continue to join Block X's, Y's, and Z's to make diagonal rows, adding Fabric F quarter-square triangles on ends. For the center diagonal row, add Fabric F  $6\frac{5}{8}$ " half-square triangles to the ends as shown. After completing the 11 diagonal rows, join the rows. Sew Fabric F half-square triangles to the top left and bottom right corners.

- Sew the shorter Fabric E borders to the sides of the quilt. Sew the longer borders to the top and bottom. Repeat these steps with the Fabric F borders.

## Finishing the Quilt

- Layer the quilt with batting and backing and baste. Quilt in the ditch around borders and block patches. Quilt as desired in the centers of Block Z's and in the outer border. Bind to finish the quilt.



Antique Quilt Diagram

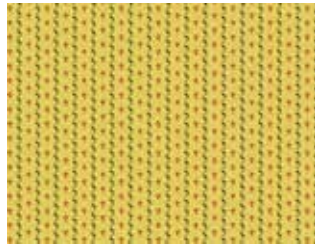


# Square in Square

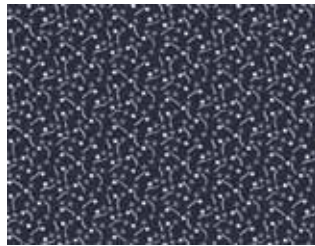
by Kathy Hall with Jo Morton for  
the International Quilt Study Center



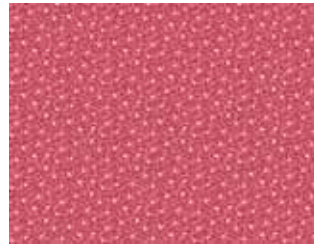
5885-R



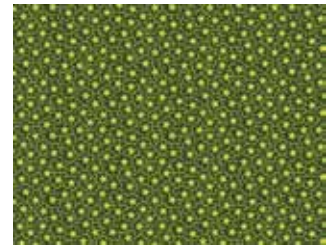
5886-RY\*



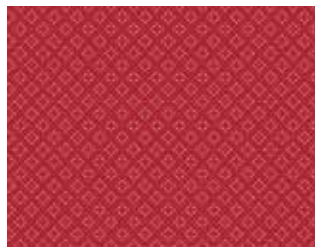
5889-RB\*



5887-R\*



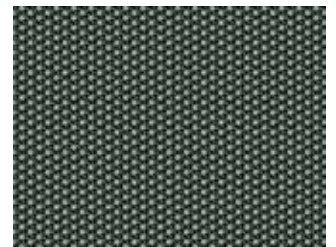
5888-RG\*



5892-R\*



5890-RY\*



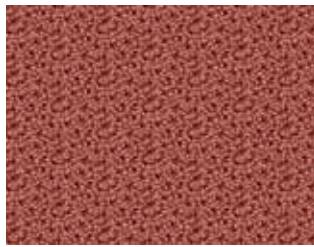
5891-RB\*



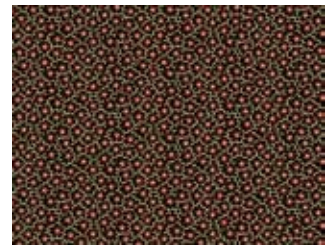
5885-K



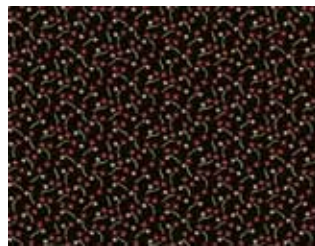
5886-K



5887-KR



5888-K



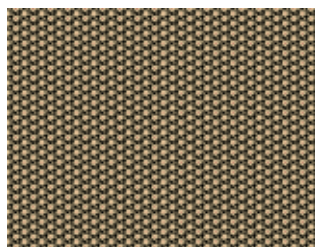
5889-K



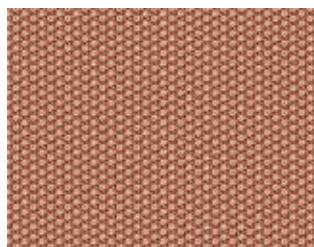
5889-KR



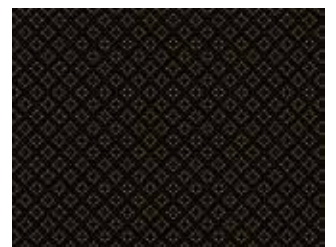
5890-KL



5891-K



5891-KR



5892-K

\*Indicates fabrics used in  
Square in Square Antique quilt pattern.

Fabrics shown are 25% of actual size.

Free Pattern Download Available  
at [www.andoverfabrics.com](http://www.andoverfabrics.com)