

# SQUARE IN SQUARE

## PAISLEY QUILT



Quilt size: 84" x 84"



*Fabrics by  
Kathy Hall with  
Jo Morton for the*  
**International Quilt  
Study Center**

Under License to Andover Fabrics from The International  
Quilt Study Center, University of Nebraska - Lincoln



**makower uk**

1384 Broadway  
New York, NY 10018  
(800) 223-5678  
[www.andoverfabrics.com](http://www.andoverfabrics.com)

5/31/12

# Square-in-Square Paisley Quilt

Introducing Andover Fabrics new collection: Square-in-Square by Kathy Hall with Jo Morton for International Quilt Study Center

## Fabric Requirements

		Yardage	Red	Black
Fabric A	block Z, border	4 yards	5885-R	5885-K
Fabric B	block Y	7/8 yard	5887-R	5887-KR
Fabric C	block Y	1 3/8 yards	5888-RG	5888-K
Fabric D	block Z	1 5/8 yards	5889-RB	5891-KR
Fabric E	block Y	3/4 yard	5890-RY	5890-KL
*Fabric F	block Y, setting	1 3/4 yards	5892-R	5892-K
Fabric G	inner border	5/8 yard	5891-RB	5891-K
Fabric H	backing	7 1/2 yards	5886-RY	5886-K

\*includes binding

Quilt finishes 84" x 84"

36 Block Y: 8" x 8"  
25 Block Z: 8" x 8"

*A lovely red and green antique quilt from the mid-19th century is the basis for the fabric prints in this collection. A lush leafy print that was added to the mix adds variety to the border and blocks. Make the red and green version to honor the original antique or choose the black version for a more contemporary look. A pattern for the antique quilt is given separately.*

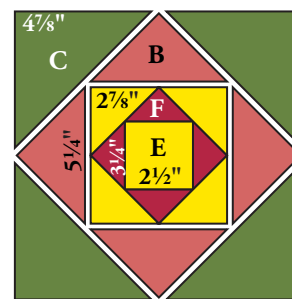
## Cutting Directions

**Note:** All measurements are cut sizes and include 1/4" seam allowances. Borders are cut the exact lengths required plus 1/4" seam allowances. WOF designates the width of fabric from selvedge to selvedge (approximately 42" wide).

- Fabric A** Fussy-cut (2) borders 6 1/2" x 84 1/2", cut lengthwise  
Fussy-cut (2) borders 6 1/2" x 72 1/2", cut lengthwise  
Cut (25) squares 8 1/2" x 8 1/2"
- Fabric B** Cut (36) squares 5 1/4" x 5 1/4", cut in half diagonally twice to make 144 quarter-square triangles
- Fabric C** Cut (72) squares 4 7/8" x 4 7/8", cut in half diagonally to make 144 half-square triangles
- Fabric D** Cut (100) squares 4 1/2" x 4 1/2"
- Fabric E** Cut (72) squares 2 7/8" x 2 7/8", cut in half diagonally to make 144 half-square triangles  
Cut (36) squares 2 1/2" x 2 1/2"
- Fabric F** Cut (9) strips 2 1/2" x WOF for binding  
Cut (5) squares 12 5/8" x 12 5/8", cut in half diagonally twice to make 20 quarter-square triangles  
Cut (36) squares 3 1/4" x 3 1/4", cut in half diagonally twice to make 144 quarter-square triangles  
Cut (2) squares 6 5/8" x 6 5/8", cut in half diagonally to make 4 half-square triangles
- Fabric G** Cut (8) strips 2 1/2" x WOF, pieced to make the following:  
(2) borders 2 1/2" x 72 1/2"  
(2) borders 2 1/2" x 68 1/2"
- Fabric H** Cut (3) panels 30" x 90", pieced to fit quilt top with overlap on all sides

## Making the Quilt

- Referring to the Block Y diagram, sew Fabric F 3/4" quarter-square triangles to the sides of each Fabric E 2 1/2" square. Press seam allowances away from the center. Sew Fabric E 2 7/8" half-square triangles to the block. Add Fabric B and Fabric C triangles to the sides to make a block. Make 36 Block Y's.



Make 36

Block Y

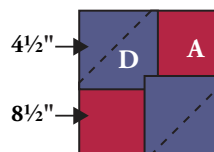


Diagram 1

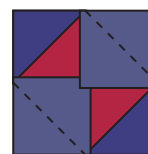
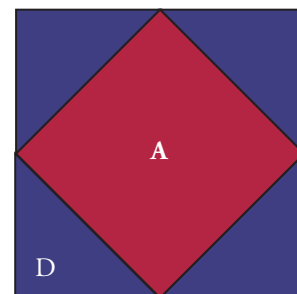


Diagram 2



Make 25

Block Z

## Square-in-Square Paisley Quilt

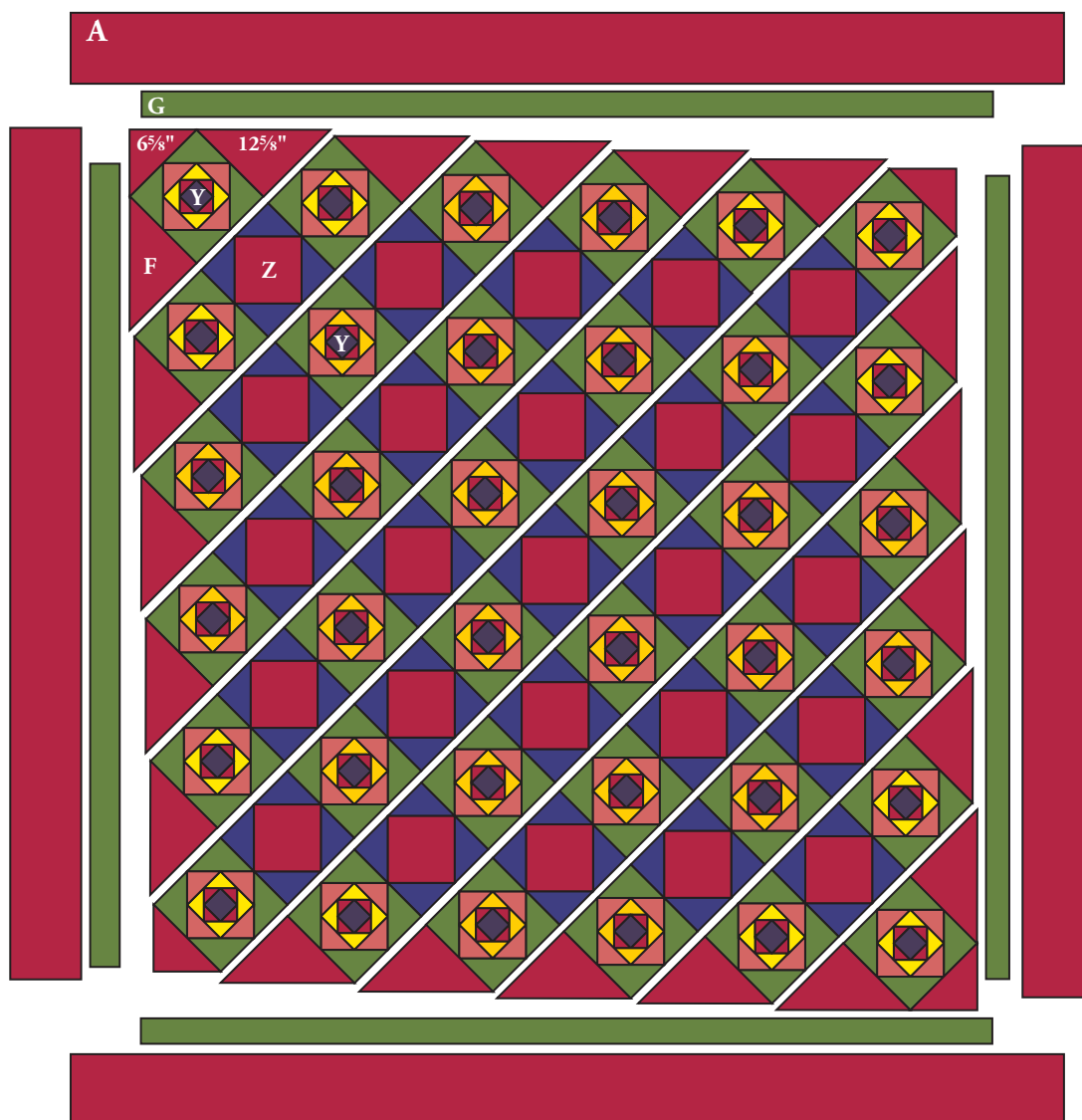
- The Block Z's are made with quick stitch-and-flip piecing methods. Draw a diagonal line on the wrong side of each Fabric D  $4\frac{1}{2}$ " square. Referring to Diagram 1, place a marked square on a Fabric A  $8\frac{1}{2}$ " square, right sides together, aligning raw edges at the corner. Stitch on the drawn line; trim away and discard excess fabric. Press open. Repeat on the opposite corner, watching orientation of the sewing line. Repeat on each of the 4 corners (Diagram 2). Make 25 Block Z.
- Referring to the Quilt Diagram, sew Fabric F  $12\frac{5}{8}$ " quarter-square triangles to opposite sides of a Block Y, noting orientation of the triangles, to make diagonal row 1. Press seam allowances away from Block Y. For row 2, sew Block Y's to opposite sides of a Block Z. Sew a Fabric F quarter-square triangle to each end, again rotating the triangles as needed.

Press seam allowances away from the Block Y's. Continue to join Block Y's and Z's to make diagonal rows, adding Fabric F quarter-square triangles on ends. For the center diagonal row, add Fabric F  $6\frac{7}{8}$ " half-square triangles to the ends as shown. After completing the 11 diagonal rows, join the rows. Sew Fabric F half-square triangles to the top left and bottom right corners.

- Sew the shorter Fabric G borders to the sides of the quilt. Sew the longer borders to the top and bottom. Repeat these steps with the Fabric A borders.

### Finishing the Quilt

- Layer the quilt with batting and backing and baste. Quilt in the ditch around borders and block patches. Quilt around Fabric A printed motifs in the centers of Block Z's and in the outer border. Bind to finish the quilt.



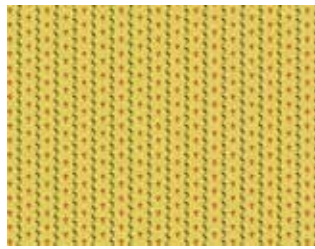
Paisley Quilt Diagram

# Square in Square

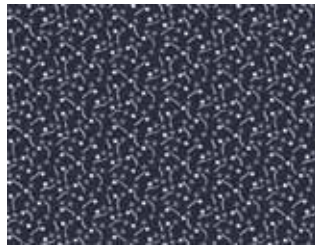
by Kathy Hall with Jo Morton for  
the International Quilt Study Center



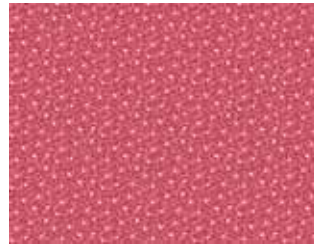
5885-R\*



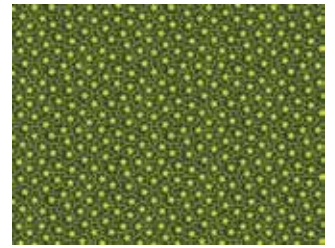
5886-RY\*



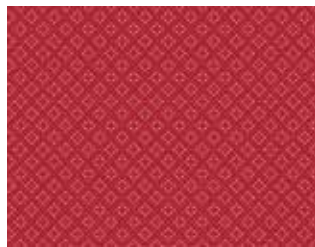
5889-RB\*



5887-R\*



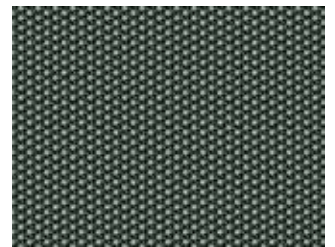
5888-RG\*



5892-R\*



5890-RY\*



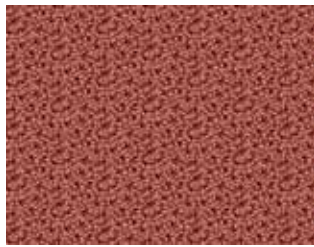
5891-RB\*



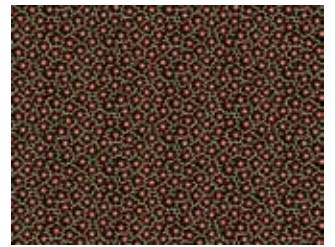
5885-K



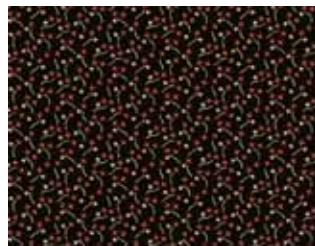
5886-K



5887-KR



5888-K



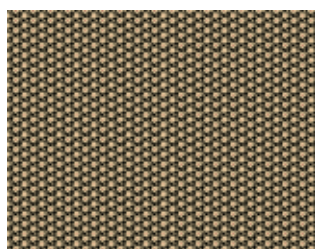
5889-K



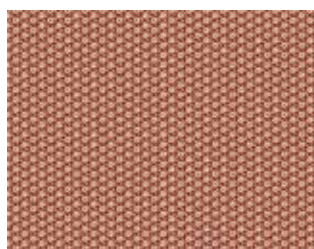
5889-KR



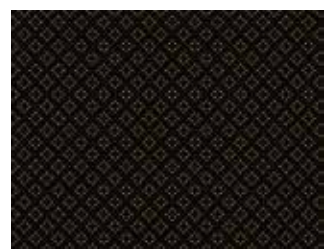
5890-KL



5891-K



5891-KR



5892-K

\*Indicates fabrics used in  
Square in Square Paisley quilt pattern.

Fabrics shown are 25% of actual size.

Free Pattern Download Available  
at [www.andoverfabrics.com](http://www.andoverfabrics.com)