

IN PLAIN SIGHT

Fabrics by Kathy Hall



Quilt designed by
Heidi Pridemore
Quilt size: 60" x 72"



makower uk

1384 Broadway
New York, NY 10018
(800) 223-5678
www.andoverfabrics.com

In Plain Sight Quilt

Introducing Andover Fabrics new collection: *In Plain Sight* by Kathy Hall

Quilt designed by Heidi Pridemore

Quilt finishes 60" x 72"
Large Blocks: 12" finished
Small Blocks: 6" finished

Fabric Requirements

		Yardage	Multi	Brown
Fabric A	Outer Border & Block Centers	2 yards	5936-M	5936-N
Fabric B*	Block Centers	¾ yard	5937-M	5937-N
Fabric C	Quarter Square Triangles	⅔ yard	5941-MO	5941-N4
Fabric D	Quarter Square Triangles	⅞ yard	5938-M	5938-N
Fabric E	Quarter Square Triangles	⅔ yard	5939-M	5941-NC
Fabric F	Quarter Square Triangles	⅔ yard	5940-M	5940-N
Fabric G	Quarter Square Triangles	⅞ yard	5941-MB	5941-NG
Fabric H	Quarter Square Triangles	⅞ yard	5941-MK	5939-N
Fabric I	Frames, Inner Border & Binding	1¾ yards	1867-K2	1867-N1
*Backing		4 yards	5937-M	5937-N

Cutting Directions

Note: Borders are cut the exact lengths required plus ¼" seam allowances.
WOF designates the width of fabric from selvedge to selvedge (approximately 42" wide).

- Fabric A** Cut (2) 4½" x 64½" strips from the Length of Fabric (LOF).
Cut (2) 4½" x 60½" strips from the LOF.
Cut (9) 11" squares from the remaining fabric.
- Fabric B** Cut (2) 11" x WOF strips. Sub-cut into four 11" squares.
- Fabric C** Cut (2) 7¼" x WOF strips. Sub-cut into (7) 7¼" squares.
Cut (4) squares across both diagonals to make (16*) triangles.
- Fabric D** Cut (3) 7¼" x WOF strips. Sub-cut into (12) 7¼" squares.
Cut (4) squares across both diagonals to make (16*) triangles.
- Fabric E** Cut (2) 7¼" x WOF strips. Sub-cut into (7) 7¼" squares.
- Fabric F** Cut (2) 7¼" x WOF strips. Sub-cut into (9) 7¼" squares.
Cut (4) squares across both diagonals to make (16*) triangles.
- Fabric G** Cut (3) 7¼" x WOF strips. Sub-cut into (12) 7¼" squares.
Cut (4) squares across both diagonals to make (16*) triangles.
- Fabric H** Cut (3) 7¼" x WOF strips. Sub-cut into (14) 7¼" squares.
Cut (13) squares across both diagonals to make (52) triangles.
- Fabric I** Cut (1) 9" x WOF strip. Sub-cut into (26) 1¼" x 9" strips.
Cut (1) 7½" x WOF strip. Sub-cut into (26) 1¼" x 7½" strips.
Cut (7) 2½" x WOF strips. Piece the strips together to make
(2) 2½" x 60½" strips and (2) 2½" x 52½" strips.
Cut (7) 2½" x WOF strips for the binding.
- Backing** Cut (2) 68" x WOF strips. Sew the strips together and trim to make one 68" x 80" backing piece.

*NOTE: You will only need (13) triangles of each fabric.

Large Blocks

1. Fold one 11" Fabric A square into quarters and press to make a vertical and horizontal centerline. Draw a diagonal line from the top centerline to the side centerline in each quarter section to draw a diamond in the center of the block (Fig. 1).
2. Cut along each diagonal line to make a square-on-point with the printed design going up and down (Fig. 2). Trim the square to measure 7½" square.
3. Repeat Steps 1 and 2 with the remaining 11" Fabric A squares to make nine 7½" square-on-point Fabric A squares.
4. Repeat Steps 1 and 2 with the four 11" Fabric B squares to make four 7½" square-on-point Fabric B squares.

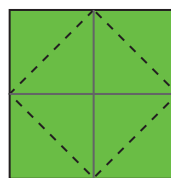


Fig. 1

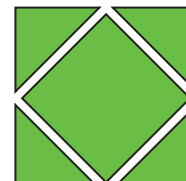


Fig. 2

In Plain Sight Quilt

- Sew one 1¼" x 7½" Fabric I strip to each side of one 7½" Fabric A square. Sew one 1¼" x 9" Fabric I strip to the top and bottom of the 7½" Fabric A square to make one 9" Block A center (Fig. 3). Repeat to make nine Block A centers total.
- Sew one 1¼" x 7½" Fabric I strip to each side of one 7½" Fabric B square. Sew one 1¼" x 9" Fabric I strip to the top and bottom of the 7½" Fabric B square to make one 9" Block B center (Fig. 4). Repeat to make four Block B centers total.
- Place one Fabric F triangle on top of one Fabric H triangle and sew them together down on short side to make one F/H corner triangle (Fig. 5). Repeat to make thirteen F/H corner triangles total.
- Place one Fabric D triangle on top of one Fabric H triangle and sew them together down on short side to make one D/H corner triangle (Fig. 6). Repeat to make thirteen D/H corner triangles total.
- Place one Fabric G triangle on top of one Fabric H triangle and sew them together down on short side to make one G/H corner triangle (Fig. 7). Repeat to make thirteen G/H corner triangles total.
- Place one Fabric C triangle on top of one Fabric H triangle and sew them together down on short side to make one C/H corner triangle (Fig. 8). Repeat to make thirteen C/H corner triangles total.
- Follow Figure 9 to center and sew one of each corner triangles from Steps 7-10 to one Block A center square to make one 12½" Block A square. Repeat to make nine Block A squares total.
- Follow Figure 10 to center and sew one of each corner triangles from Steps 7-10 to one Block B center square to make one 12½" Block B square. Repeat to make four Block B squares total.

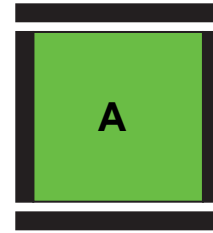


Fig. 3 – Make 9

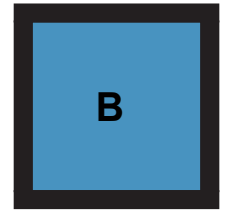


Fig. 4 – Make 4

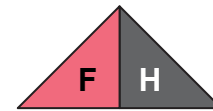


Fig. 5 – Make 13

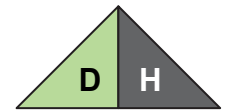


Fig. 6 – Make 13

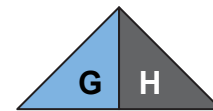


Fig. 7 – Make 13

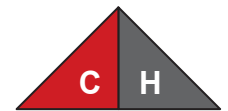


Fig. 8 – Make 13

Small Blocks

- Place one 7¼" Fabric E square on top of one 7¼" Fabric C square, right side together. Draw a line across the diagonal of the top square (Fig. 11). Sew ¼" away from each side of the drawn diagonal line (Fig. 11). Cut the two squares apart on the drawn diagonal line (Fig. 12) to make two half-square triangles (Fig. 13).
- Trim the blocks to measure 6⅞" square.
- Place one half-square triangle from Step 14 on top of another half-square triangle, right sides together. Make sure the center seam is going in the same direction on both half-square triangles and the Fabric E Triangle in the top block is opposite from the Fabric E in the bottom block (Fig. 14).
- Draw a diagonal line across the top half-square triangle so that it goes through the sewn seam. Sew ¼" away from both sides of the drawn line (Fig. 15). Cut on the drawn line to make two 6½" E/C quarter-square triangles (Fig. 16).
- Repeat to make four E/C quarter-square triangles total. You will only need three of them.

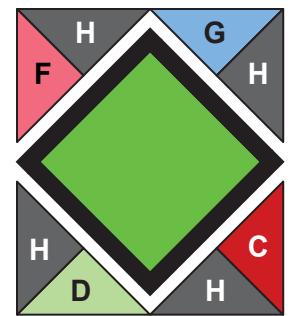


Fig. 9 – Make 9

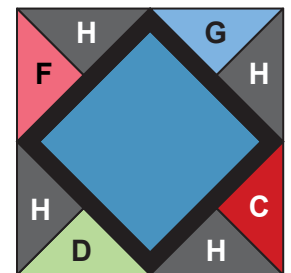


Fig. 10 – Make 4

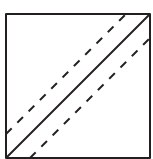


Fig. 11

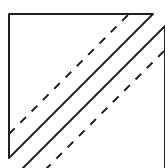


Fig. 12

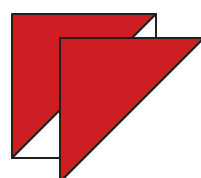


Fig. 13

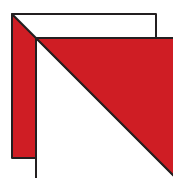


Fig. 14

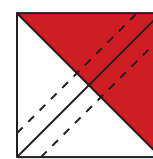


Fig. 15

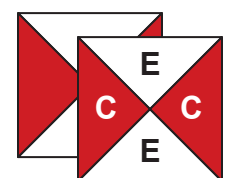


Fig. 16 – Make 3

In Plain Sight Quilt

18. Repeat Steps 13-16 with two 7¼" Fabric D squares and two 7¼" Fabric G squares to make four D/G quarter-square triangles total (Fig. 17). You will only need three of them.
19. Repeat Steps 13-16 with five 7¼" Fabric E squares and five 7¼" Fabric D squares to make ten E/D quarter-square triangles total (Fig. 18). You will only need nine of them.
20. Repeat Steps 13-16 with five 7¼" Fabric G squares and five 7¼" Fabric F squares to make ten G/F quarter-square triangles total (Fig. 19). You will only need nine of them.
21. Repeat Steps 13-16 with one 7¼" Fabric G square and one 7¼" Fabric H squares to make two G/H quarter-square triangles total (Fig. 20).
22. Repeat Steps 13-16 with one 7¼" Fabric D square and one 7¼" Fabric C squares to make two D/C quarter-square triangles total (Fig. 21).

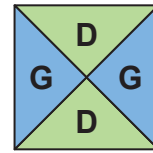


Fig. 17 – Make 3

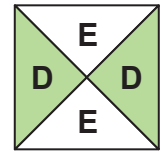


Fig. 18 – Make 9

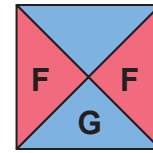


Fig. 19 – Make 9

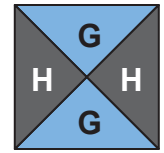


Fig. 20 – Make 2

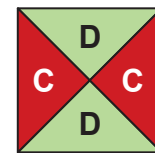


Fig. 21 – Make 2

Quilt Top

23. Follow Figure 22 two sew together four assorted quarter-square triangle blocks and three large Block A squares to make a Block A row. Repeat to make three Block A rows total.
24. Follow Figure 23 two sew together eight assorted quarter-square triangle blocks and two large Block B squares to make a Block B row. Repeat to make a second Block B row.
25. Sew together the three Block A rows and two Block B rows, alternating them to make the 48½" x 60½" quilt top.
26. Sew one 2½" x 60½" Fabric I strip to each side of the quilt top. Sew one 2½" x 52½" Fabric I strip to the top and bottom of the quilt top.
27. Sew one 4½" x 64½" Fabric A strip to each side of the quilt top. Sew one 4½" x 60½" Fabric A strip to the top and bottom of the quilt top.

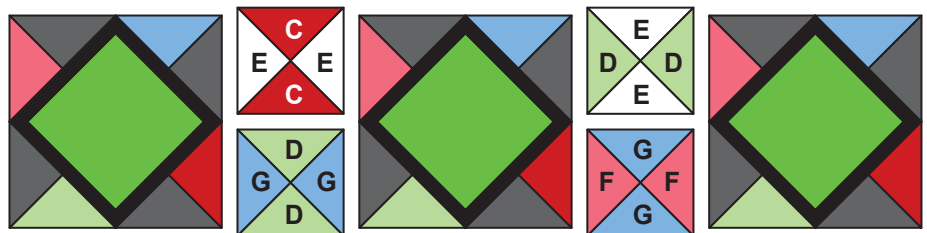


Fig. 22 – Make 3

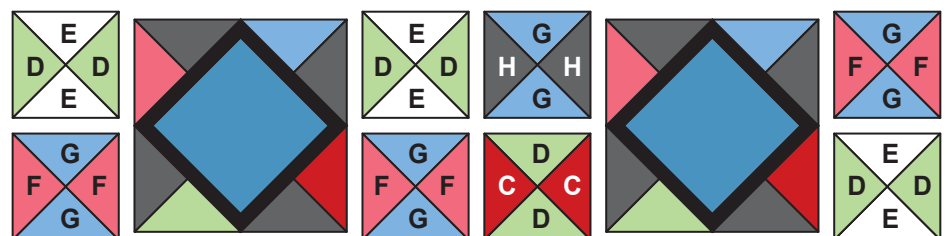
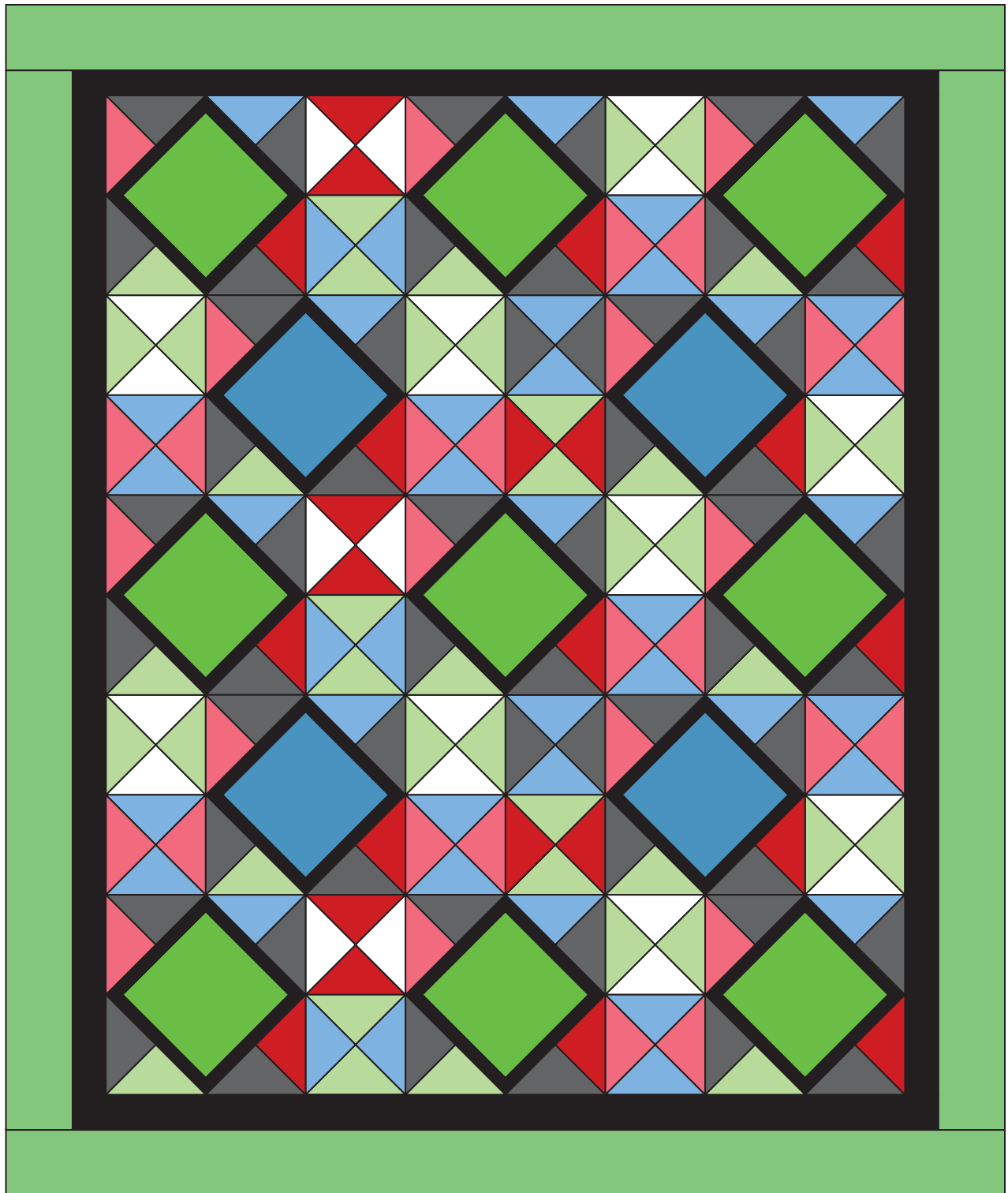


Fig. 23 – Make 2

Finishing the Quilt

28. Layer and quilt as desired. Sew the seven 2½" x 42" Fabric I strips together end-to-end with a 45° seams to make the binding. Fold this long strip in half lengthwise with wrong sides together and press. Bind as desired.



Quilt Diagram

1384 Broadway
 New York, NY 10018
 (800) 223-5678
 www.andoverfabrics.com

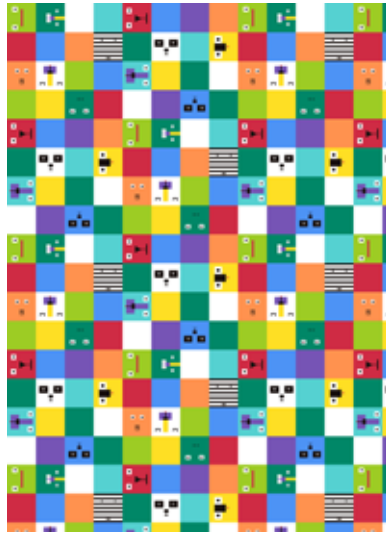
In Plain Sight

by Kathy Hall

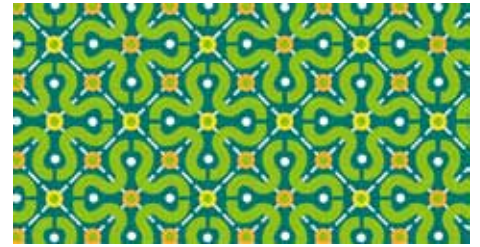
Andover
 Fabrics™
 makower uk®



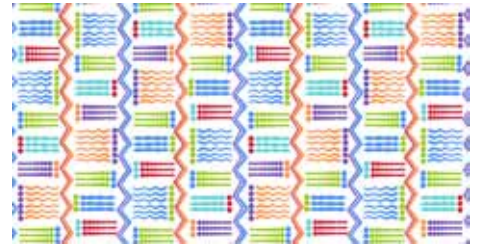
5936-M*



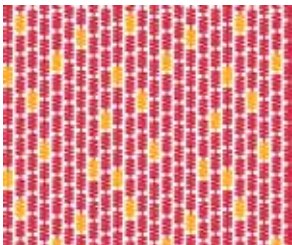
5937-M*



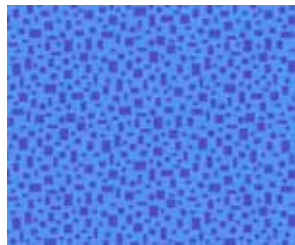
5938-M*



5939-M



5940-M*



5941-MB*



5941-MK*



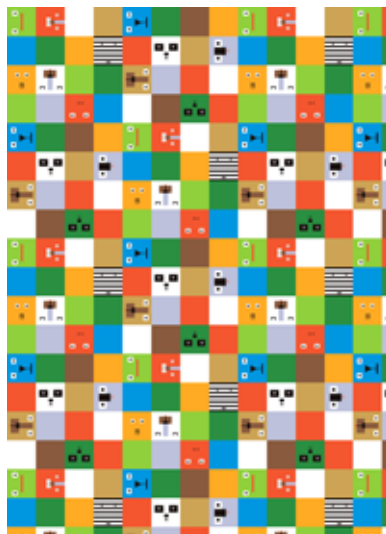
5941-MO*



1867-K2*



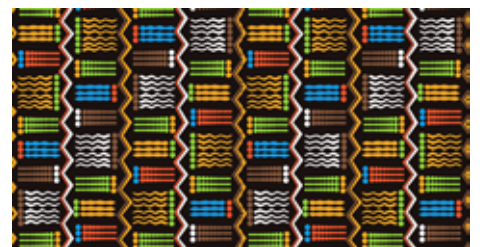
5936-N



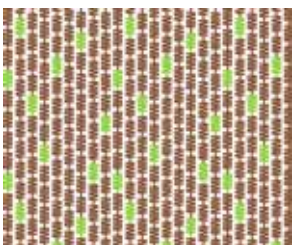
5937-N



5938-N



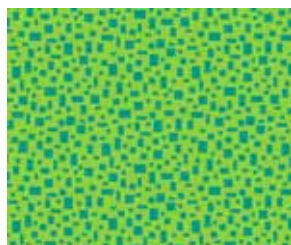
5939-N



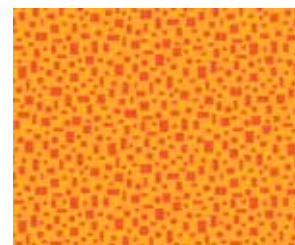
5940-N



5941-NC



5941-NG



5941-N4



1867-N1

*Indicates fabric used in quilt pattern. Fabrics shown are 20% of actual size. Free Pattern Download Available at www.andoverfabrics.com Revised 7/17/12