

Kimono

Finished size 74" x 74" (1.9m x 1.9m)

Designed by Lynne Goldsworthy of lilysquilts.blogspot.com
using the Kimono collection from Makower UK www.makoweruk.com



Quilt back



Quilt front

Kimono

Finished size 74" x 74" (1.9m x 1.9m)

Designed by Lynne Goldsworthy of lilysquilts.blogspot.com

using the Kimono collection from Makower UK www.makoweruk.com

Fabric Requirements*

SKU	Description	Amount	Cut
2042 Q	Chrysanthemum	One FQ	Two 4 ½" WOFQ strips cut into nine template A fan leaves each (eighteen total) One 5 ½" x 8" rectangle
2042 X	Chrysanthemum	80cm / 30"*	One 5 ½" WOF strip cut into two 5 ½" x 8" rectangles and two template A fan leaves One 4 ½" WOF strip cut into twenty-two template A fan leaves Eight 2 ½" WOF strips (binding)
2043 L	Blossom	One FQ	One 5 ½" WOFQ strip cut into two 5 ½" x 8" rectangles One 4 ½" WOFQ strip cut into two 4 ½" x 10" rectangles One 3 ½" WOFQ strip cut into four 3 ½" x 4 ½" rectangles One 1" WOFQ strip cut into two Template I collar sections
2043 R	Blossom	One FQ*	Two 4 ½" WOFQ strips cut into four 4 ½" x 10" rectangles Two 3 ½" WOFQ strips cut into eight 3 ½" x 4 ½" rectangles One 1" WOFQ strip cut into four Template I collar sections
2044 Q	Koi (Background)	3 m/ 3 yds*	For the twelve fan blocks; Two 8" WOF strips cut into six 7" x 8" rectangles each Two 12 ½" WOF strips. Cut eight Template B fan surrounds from one strip and four from the other. NB: tape the B1 and B2 template pieces together at the red line to make the B template. Cut four 4 ½" x 10" rectangles from the remainder One 10" WOF strip cut into eight 4 ½" x 10" rectangles Four 2 ½" WOF strips cut into twelve 2 ½" x 12 ½" strips For the thirteen kimono blocks; One 7 ½" WOF strip cut into fourteen 2 ½" x 7 ½" rectangles Four 4 ½" WOF strips cut into fourteen 4 ½" x 10" rectangles Twelve 1" WOF strips cut into twenty-six 1" x 10 ½" and thirteen 1" x 12 ½" strips For the sashing; Six 1 ½" WOF strips. Sew end to end and cut into two 1 ½" x 60 ½" and two 1 ½" x 62 ½" lengths
2044 X	Koi	1.25 m / 1 ½ yds	Seven 6 ½" WOF strips. Sew end to end and cut into two 6 ½" x 62 ½" and two 6 ½" x 74 ½" strips
2045 L	Fans	One FQ	One 5 ½" WOFQ strip cut into two 5 ½" x 8" rectangles One 4 ½" WOFQ strip cut into two 4 ½" x 10" rectangles One 3 ½" WOFQ strip cut into four 3 ½" x 4 ½" rectangles One 1" WOFQ strip cut into two Template I collar sections
2046 Q	Kanji	One FQ	First cut one 5 ½" LOFQ (vertical strip) and cut into two 5 ½" x 8" portrait style rectangles Cut the remainder of the FQ into three 4 ½" WOFQ strips and cut those into eighteen template A fan leaves
2046 X	Kanji	One FQ	Three 4 ½" WOFQ strips cut into eight template A fan leaves each (twenty-four total)
2048 Q	Maple Leaves	One FQ	Three 5 ½" WOFQ strips cut into thirteen 4" x 5 ½" rectangles

2048 X	Maple Leaves	35cm / 15"	Two 4 ½" WOF strips cut into six 4 ½" x 10" rectangles. Cut the remainder of these strips into six 3 ½" x 4 ½" rectangles. One 3 ½" WOF strip cut into four 3 ½" x 4 ½" rectangles and five Template I collar sections
2049 Q	Hexagon Patch	One F8th	Two 5 ½" x 8" rectangles
2049 X	Hexagon Patch	One F8th	Two 5 ½" x 8" rectangles
2050 G	Lattice	One F8th	Six 1" WOF8 strips cut into eight 5", four 5 ½" and four 10" lengths
2050 L	Lattice	One F8th	Six 1" WOF8 strips cut into eight 5", four 5 ½" and four 10" lengths
2050 X	Lattice	40cm / 12"*	Three 1" WOF strips cut into ten 5", five 5 ½" and five 10" lengths Two 4" WOF strips. Cut one into nine C template fan sections and the other into three C template fan sections. Cut the remainder of the second strip into two 4" WOF strips and cut into a total of twelve F template fan pieces.
Wadding		279 Cotton Mix 80-20 from http://www.vlieseline.com/en	
Threads		Aurifil 50wt for piecing and 40wt for quilting from http://www.aurifil.com	
Templates		One of each of templates A to F and I to K Twelve G and twelve H templates	
Quilt back can be made with 4.25 m or 4 ½ yds 2049X cut into two equal lengths then sewn together to make a traditional quilt back or optional pieced back requirements below			
2049 X	Hexagon Patch	2.50m / 2 ¾ yds	Three 12 ½" WOF strips and four 14 ½" WOF strips. Sew the 12 ½" strips end to end and cut into two 54 ½" lengths. Sew the 14 ½" strips end to end and cut into two 82 ½" lengths.
2050 X	Lattice	1m / 1 yd*	Five 6 ½" WOF strips cut into two 42 ½" and two 58 ½" lengths Two 1 ½" WOF strips. Cut one 23" and one 43" length
2051 1	Panel	2 panels	See pattern for cutting instructions

*No or extremely small margin for error / squaring up so shops may wish to kit / purchasers may wish to add 10% or so.

Notes:

- Read the pattern in full before starting.
- ¼" seams are used throughout except where stated otherwise.
- Press after each seam, pressing seams open or to one side as preferred.
- WOF - width of fabric - a strip of fabric cut from selvedge to selvedge.
- WOFQ – a strip cut from selvedge to the centre cut from a FQ
- LOFQ – a strip cut from a FQ parallel to the selvedges
- WOF8 – a strip cut from selvedge to the centre cut from a F8th
- This pattern uses foundation paper piecing. If you are not familiar with this technique, we suggest practicing on scraps first and the following online tutorial is a useful guide:
<http://www.lovepatchworkandquilting.com/blog/foundation-paper-piece>
- Make sure to visit <http://www.makoweruk.com/projects/> to ensure you are working from the most up-to-date version of the pattern.

Making the quilt top

1. Cut the fabrics as shown in the fabric requirements table.

Making the twelve fan blocks (see fig 1 for steps 2 to 9)

2. Sew the fan leaves into twelve sets of seven following the layout in the main quilt image. Note there are two different fabric layouts for the fans.
3. Cut six of the 7" x 8" cream koi (background "BKG") rectangles into twelve D template and six into twelve E templates.
4. Sew one of the E template BKG pieces to one side of each fan.
5. Sew the F template BKG pieces to the corners of the D template pieces.
6. Sew the F/D BKG pieces to the fan/E pieces.
7. Sew the B template BKG pieces to the top of the fans taking care to match the marked points on the B template pieces with the seams between the fan leaves.
8. Sew 2 1/2" x 12 1/2" BKG strips to the bottom of these.

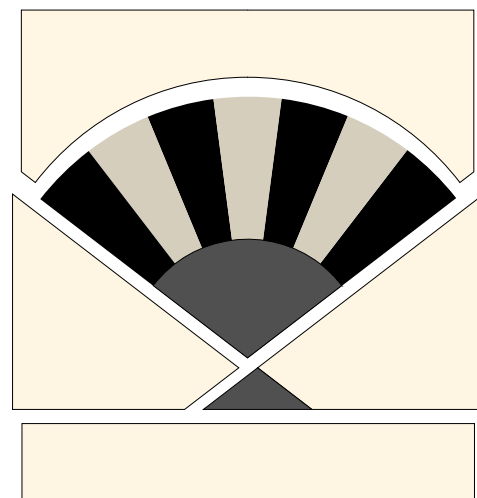
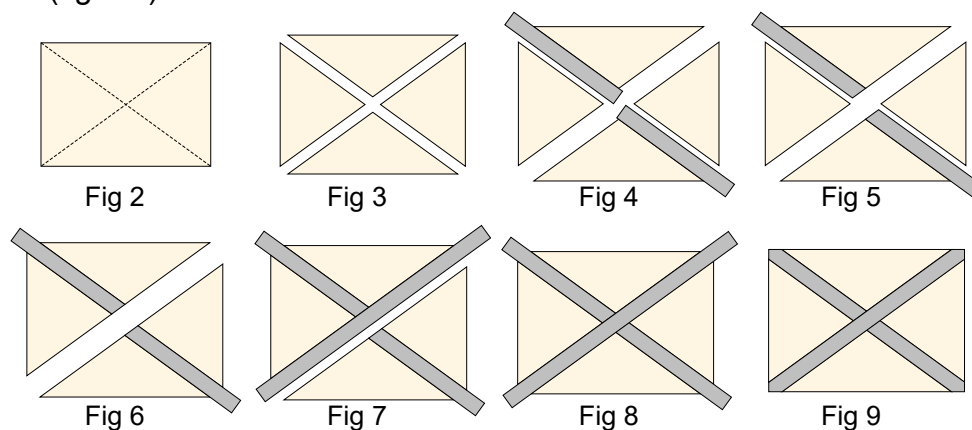


Fig 1

Making the thirteen kimono blocks (see fig 12 opposite for each section)

9. To make the sides of the kimonos, cut half of the 4 1/2" x 10" rectangles from each fabric in half on the diagonal top left to bottom right and half on the diagonal top right to bottom left.
10. Cut half of the 2 1/2" x 7 1/2" BKG rectangles in half on the diagonal top left to bottom right and half on the diagonal top right to bottom left.
11. Foundation paper piece the G and H templates using the kimono print pieces cut at 10 above for section 1 on the templates, the BKG pieces cut at 10 for section 2 on the templates and the pieces cut at 11 for section 3 on the templates.
12. Trim paper and fabric to the dashed lines and remove paper from the back.
13. To make the bodices of the kimonos, cut the cream maple leaves 4" x 5 1/2" rectangles in half on both diagonals (fig 2-3).



14. Sew 1" x 5" strips of lattice fabric to one side of each of the side triangles and trim away end (figs 4 and 5) (NB: see main quilt image for colour layout of the lattice fabrics).
15. Sew these pieces to the sides of the bottom and top triangles (fig 6).
16. Sew a 1" x 10" strip of lattice fabric to one of the pieces made at 16 above (fig 7).
17. Sew the two sides of the rectangle together taking care to align the pieces so that the two sides join to give the appearance of a single line. Trim away excess fabric (figs 8 and 9).
18. Sew a 1" x 5 1/2" strip of lattice fabric to the bottom of this piece.
19. To make the collar section of the kimonos, cut seven of the 1 1/2" x 10 1/2" BKG strips into two template J pieces and seven into two template K pieces.

20. Sew a template J and a template K piece to either side of a template I kimono print fabric piece to make the kimono collar sections. (fig 10-11)

21. See fig 12 and steps 22-25 and follow the fabric placement in the main quilt image for the fabric make-up of each kimono.

22. Sew two 3 ½" x 4 ½" kimono print rectangles to either side of each bodice.

23. Sew two side pieces to either side of a kimono print 5 ½" x 8" rectangle (skirt).

24. Sew the piece made at 22 to the piece made at 23 then sew the collar section to the top.

25. Sew 1" x 12 ½" BKG pieces to either side of the blocks to finish.

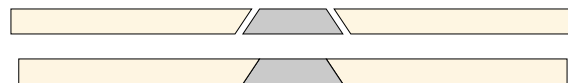


Fig 10 - 11

Assembling the quilt top

26. Sew the blocks into five rows of five following the placement in the main quilt image.

27. Sew those five rows together to finish the quilt top centre.

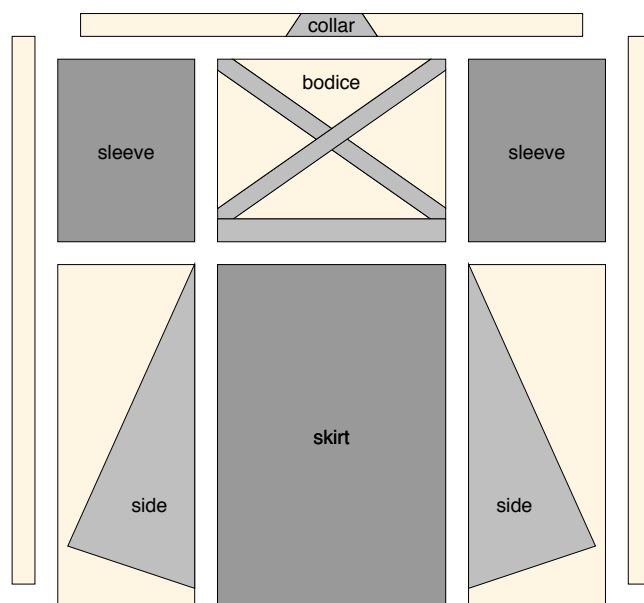


Fig 12

28. Sash the sides of the quilt top with 1 ½" x 60 ½" BKG strips then the top and bottom with 1 ½" x 62 ½" BKG strips.

29. Sash the sides of the quilt top with 6 ½" x 62 ½" strips and then the top and bottom with 6 ½" x 74 ½" strips of black koi fabric.

Making the optional pieced quilt back (82" square)

1. Trim one full panel to ½" away from the printed squares all round. Cut the second panel in half below the white square ladies section and trim both pieces panel to ½" away from the printed squares all round.

2. Join the panel which has been cut into two back together as shown in the right hand half of the quilt back image using a 1" x 23" strip of black lattice fabric.

3. Join the two panels together using a 1" x 43" strip of black lattice fabric.

4. Sash the sides of the panel piece with 6 ½" x 42 ½" strips and then the top and bottom with 6 ½" x 58 ½" strips of black lattice fabric.

5. Sash the sides of this piece with the 12 ½" x 54 ½" then the top and bottom with the 14 ½" x 82 ½" strips of black hexagon patch fabric.

Finishing the quilt

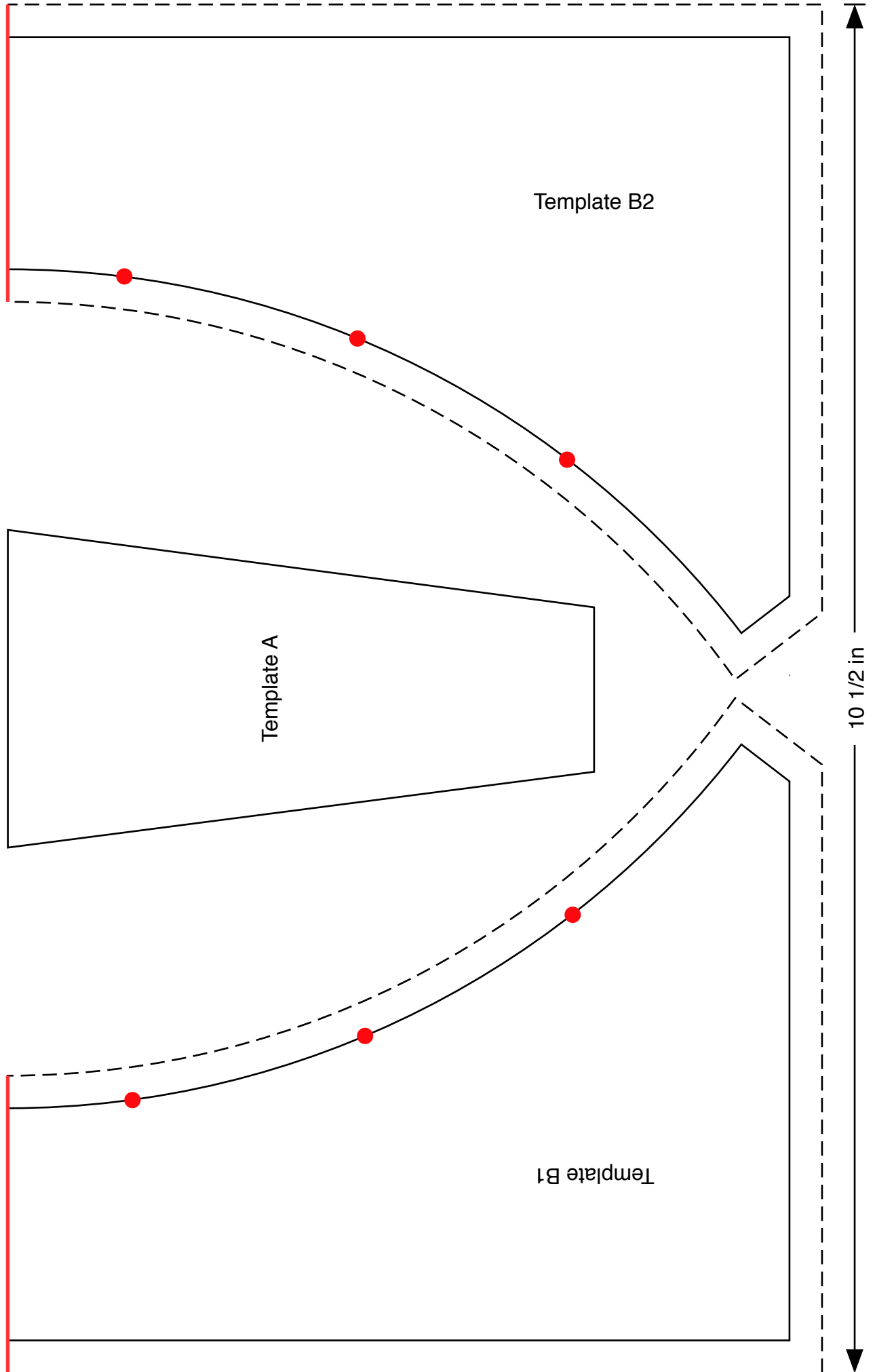
1. Sew the binding strips end to end using diagonal or straight seams as preferred and press wrong sides together along the length to make a double fold binding.

2. Make a quilt sandwich, basting together the quilt back, the wadding and the quilt top.

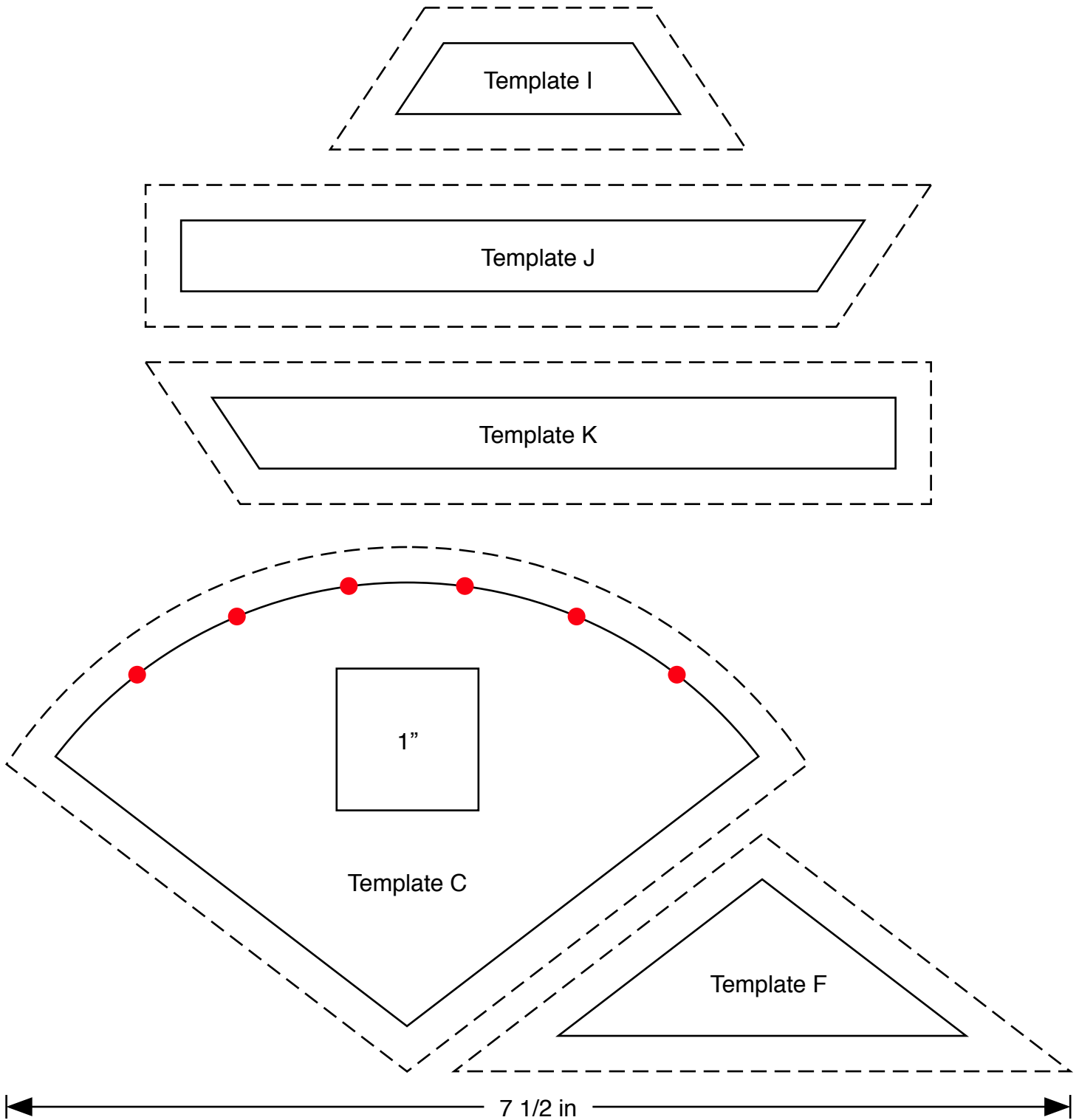
3. Quilt as desired then trim the quilt square, removing excess wadding and backing. We quilted horizontal straight lines approximately 1" apart using a cream 40wt Aurifil thread on the front and back.

4. Bind the quilt taking care to mitre the corners.

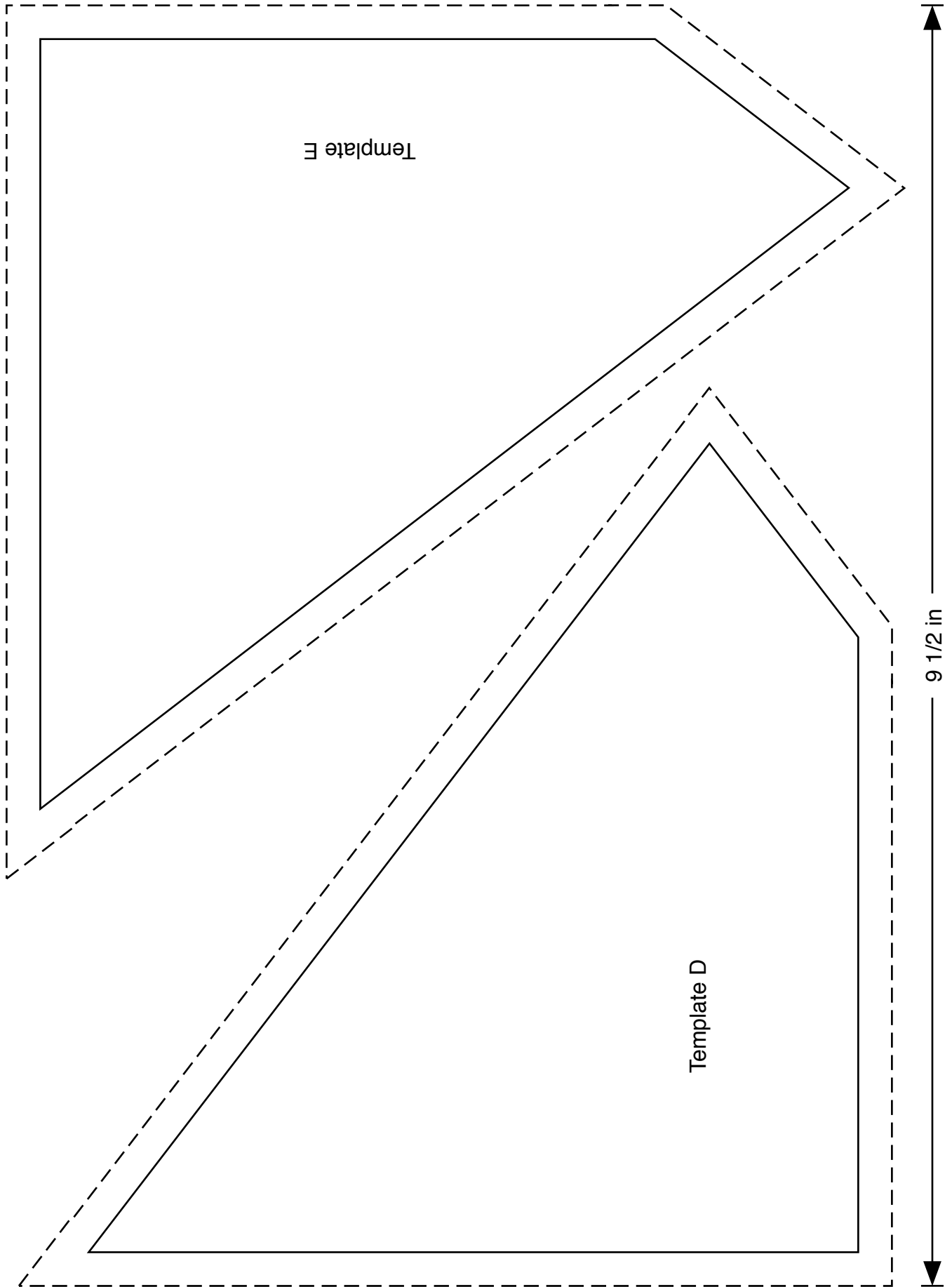
Templates must be printed at 100% or "no scaling". To ensure the templates are the correct size, measure the guide line to make sure it has printed at the correct length.



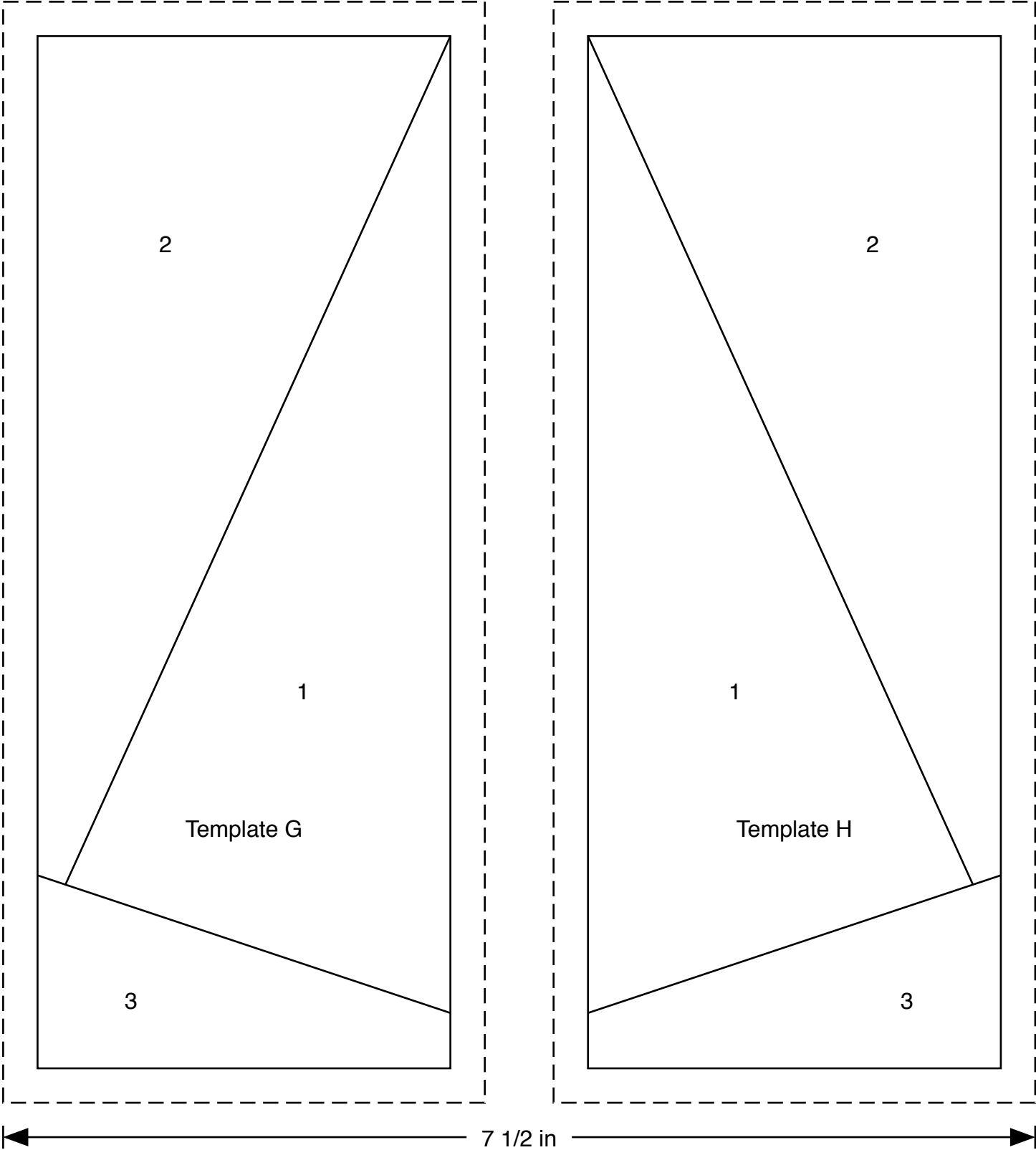
Templates must be printed at 100% or “no scaling”. To ensure the templates are the correct size, measure the guide line to make sure it has printed at the correct length.



Templates must be printed at 100% or "no scaling". To ensure the templates are the correct size, measure the guide line to make sure it has printed at the correct length.



Templates must be printed at 100% or “no scaling”. To ensure the templates are the correct size, measure the guide line to make sure it has printed at the correct length.





2042/Q Chrysanthemum



2048/Q Maple Leaves



2048/X Maple Leaves



2042/X Chrysanthemum



2049/Q Hexagons



2043/R Blossom Tree



2043/L Blossom Tree



2049/X Hexagons



2044/Q Koi



2045/L Fans



2045/N Fans



2044/X Koi



2047/S Cranes



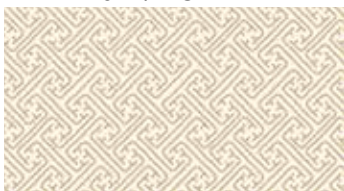
2046/Q Kanji



2046/X Kanji



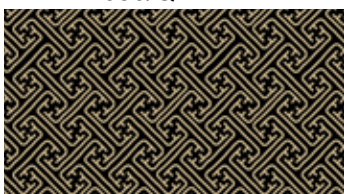
2047/R Cranes



2050/Q Lattice



2050/G Lattice



2050/X Lattice



2050/L Lattice



2051/1 Panel

Each panel 60 x 112cms (24" x 44")

Kimono Reversible Quilt

Finished size 74" x 74" (1.9m x 1.9m)

Designed by Lynne Goldsworthy of lilysquilts.blogspot.com

Download full instructions Aug 18 from

www.makoweruk.com