

# Kyoto Garden

FABRICS BY LORI MASON



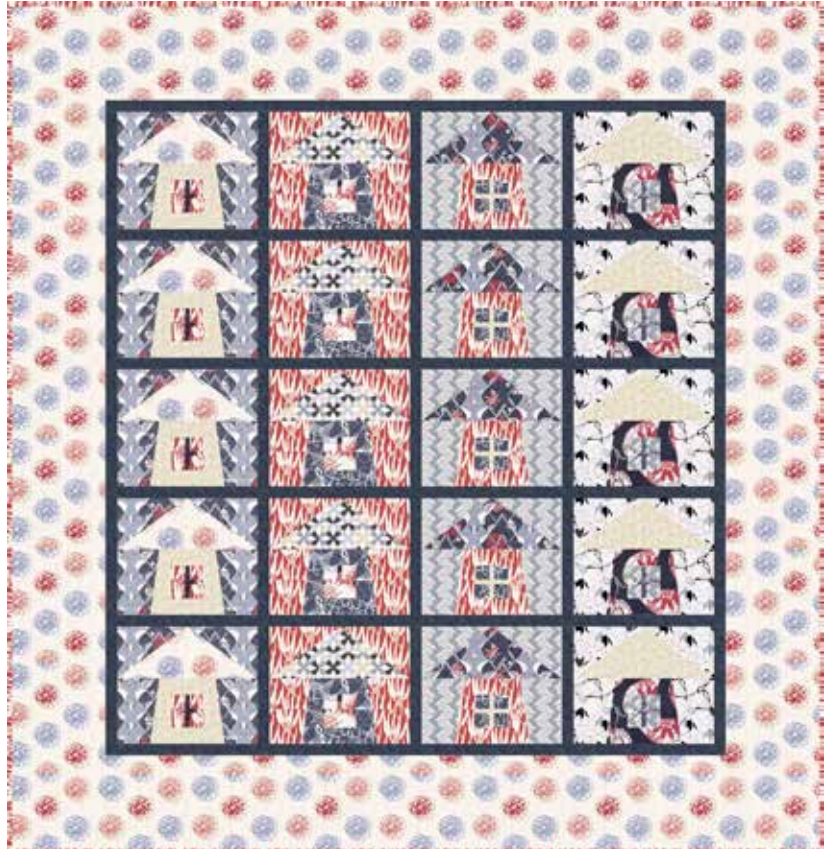
## About Kyoto Garden

Kyoto Garden Collection began with the Koi print. While in Hawaii, I was inspired by the beauty of a Koi pond. Then I remembered a book filled with images of intricately folded white paper lantern forms. My next print was inspired by one of those lanterns. Then I thought of those beautiful red-orange pods called Chinese Lanterns. Peonies and other organic shapes followed after that. It was important to have an air of elegant contemplation that I associate with a Japanese esthetic. — *Lori Mason*

Quilt Design: **Lori Mason**

Quilt Size: **86¼" x 90"**

[andoverfabrics.com](http://andoverfabrics.com)



andover



makower uk  
*The Henley Studio*

Free Pattern Download Available

1384 Broadway New York, NY 10018  
Tel. (800) 223-5678 • [andoverfabrics.com](http://andoverfabrics.com)

# Kyoto Garden



Introducing Andover Fabrics new collection: **Kyoto Garden** by Lori Mason

Quilt designed by Lori Mason

*Step into this tranquil garden filled with koi fish, charming pagodas, and exotic flowers. The patchwork is made with template patches that are easy to put together. One colorway is all reds and neutral grays; the other is browns, orchids, and golds. Either quilt will bring a note of exotic, Eastern beauty to wherever it is displayed.*

Quilt finishes 86¼" x 90"  
20 Blocks: 15" x 12½"

## Charcoal Fabric Requirements

		Yardage	Fabric
<b>Fabric A</b>	blocks	½ yard	6033-C
<b>Fabric B</b>	border, blocks	3 yards	6034-C
<b>Fabric C</b>	blocks	1 yard	6035-C
<b>Fabric D</b>	blocks, binding	1¾ yards	6036-CR
<b>Fabric E</b>	blocks	½ yard	6037-C
<b>*Fabric F</b>	blocks	¾ yard	6037-CL
<b>Fabric G</b>	blocks	¾ yard	6038-C
<b>Fabric H</b>	blocks	¾ yard	6039-CN
<b>Fabric I</b>	border, sashes	1½ yards	1867-C1
<b>Fabric J</b>	blocks	½ yard	6040-C
<b>*Backing</b>		8 yards	6037-CL

## Brown Fabric Requirements

		Yardage	Fabric
<b>Fabric A</b>	blocks	¾ yard	6033-N
<b>Fabric B</b>	blocks, binding	1¾ yards	6034-N
<b>Fabric C</b>	blocks	½ yard	6035-N
<b>Fabric D</b>	blocks	1 yard	6036-NP
<b>*Fabric E</b>	border, blocks	3½ yards	6037-NL
<b>Fabric F</b>	blocks	½ yard	6038-NG
<b>Fabric G</b>	blocks	½ yard	6039-N
<b>Fabric H</b>	blocks	½ yard	6040-N
<b>Fabric I</b>	border, sashes	1½ yards	5468-N1
<b>*Backing</b>		8 yards	6037-NL

## Cutting Directions

**Note: Read assembly directions before cutting patches.**

**Fussy-cut all patches made with directional prints.** All measurements are cut sizes and include ¼" seam allowances. Borders and sashes are cut the exact lengths required plus ¼" seam allowances. WOF designates the width of fabric from selvedge to selvedge (approximately 42" wide).

**For ONE block, cut the following:**

**Pagoda:** Cut (1) Template 4, (1) Template 4 reversed, (1) Template 5, (1) Template 6

**Roof:** Cut (1) Template 1

**Windows:** Cut (4) squares 2" x 2"

**Window sash:** Cut (1) rectangle 1" x 4", (2) rectangles 1" x 2"

**Background:** Cut (1) Template 2, (1) Template 2 reversed, (1) Template 3, (1) Template 3 reversed

## Charcoal Quilt Cutting

**Fabric A** Cut (5) pagodas  
Cut (10) window sashes, (10) rectangles 1" x 4",  
(20) rectangles 1" x 2"

**Fabric B** Cut (2) top/bottom borders 10½" x 86¾", cut lengthwise  
Cut (2) side borders 10½" x 70½", cut lengthwise  
Cut (5) roofs  
Cut (5) windows (20 squares)

**Fabric C** Cut (5) roofs  
Cut (5) backgrounds

**Fabric D** Cut (10) strips 2½" x WOF for binding  
Cut (5) backgrounds  
Cut (5) pagodas  
Cut (5) windows

**Fabric E** Cut (5) pagodas  
Cut (5) windows  
Cut (5) window sashes

**Fabric F** Cut (5) backgrounds

**Fabric G** Cut (5) backgrounds  
Cut (5) windows

**Fabric H** Cut (5) roofs  
Cut (5) pagodas  
Cut (5) window sashes

**Fabric I** Cut (20) strips 1¾" x WOF, pieced to make the following:  
(5) long sashes 1¾" x 68"  
(2) t/b borders 1¾" x 66¾"  
(16) short sashes 1¾" x 15½"

**Fabric J** Cut (5) roofs

**Backing** Cut (3) panels 33" x 95", pieced to fit quilt top with overlap on all sides

# Kyoto Garden Quilt

## Brown Quilt Cutting

**Fabric A** Cut (5) pagodas  
Cut (5) roofs

**Fabric B** Cut (10) strips  $2\frac{1}{2}$ " x WOF for binding  
Cut (5) backgrounds  
Cut (5) roofs  
Cut (5) windows (20 squares)

**Fabric C** Cut (5) backgrounds

**Fabric D** Cut (5) pagodas  
Cut (5) backgrounds  
Cut (5) window sashes

**Fabric E** Cut (2) top/bottom borders  $10\frac{1}{2}$ " x  $86\frac{3}{4}$ ", cut lengthwise  
Cut (2) side borders  $10\frac{1}{2}$ " x  $70\frac{1}{2}$ ", cut lengthwise  
Cut (5) roofs  
Cut (5) backgrounds  
Cut (5) window sashes

**Fabric F** Cut (5) pagodas  
Cut (10) windows (40 squares)

**Fabric G** Cut (5) pagodas  
Cut (5) windows  
Cut (5) window sashes

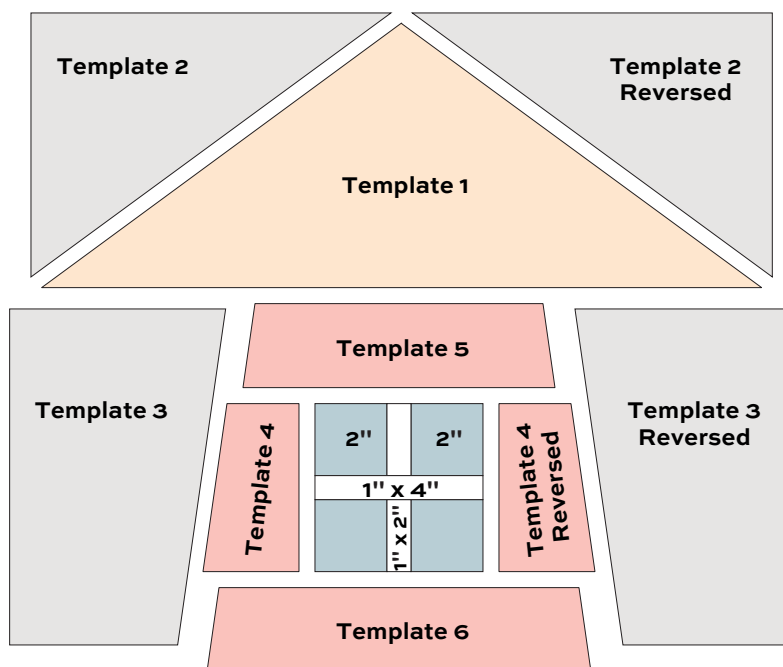
**Fabric H** Cut (5) roofs  
Cut (5) window sashes

**Fabric I** Cut (20) strips  $1\frac{3}{4}$ " x WOF,  
pieced to make the following:  
(5) long sashes  $1\frac{3}{4}$ " x 68"  
(2) t/b borders  $1\frac{3}{4}$ " x  $66\frac{3}{4}$ "  
(16) short sashes  $1\frac{3}{4}$ " x  $15\frac{1}{2}$ "

**Backing** Cut (3) panels 33" x 95", pieced to  
fit quilt top with overlap on all sides

## Making and Assembling the Quilt

1. Refer to the quilt photograph for color placement. Feel free to cut more or fewer patches of each fabric as you wish to make your pagodas unique. If you want the quilt to have the same look as the one shown, be sure to make blocks in sets of 5 alike. To ensure that odd-shaped patches go together correctly, lightly mark the sewing line on the back of all template patches.
2. Referring to the Pagoda Block diagram, sew a 1" x 2" window sash between 2 window squares. Repeat. Sew the 1" x 4" window sash between the 2 pieced window units. Sew a Template 4 patch and 4 reversed patch to the window unit. Sew a Template 5 patch to the top and a Template 6 patch to the bottom.
3. Sew Template 3 and Template 3 reversed background patches to sides of the pagoda. Sew the roof to the top, and add the background Template 2 and 2 reversed patches to finish the block. It should measure 13" tall and  $15\frac{1}{2}$ " wide, raw edge to raw edge.
4. Referring to the Quilt Diagram, sew 5 blocks from one set with 4 Fabric I short sashes to make a vertical row. Make 4 rows. Sew the 4 block rows with 5 Fabric I long sashes. Sew the Fabric I borders to the top and bottom of the quilt.
5. Sew shorter  $10\frac{1}{2}$ "-wide borders to the sides. Sew longer borders to the top and bottom.

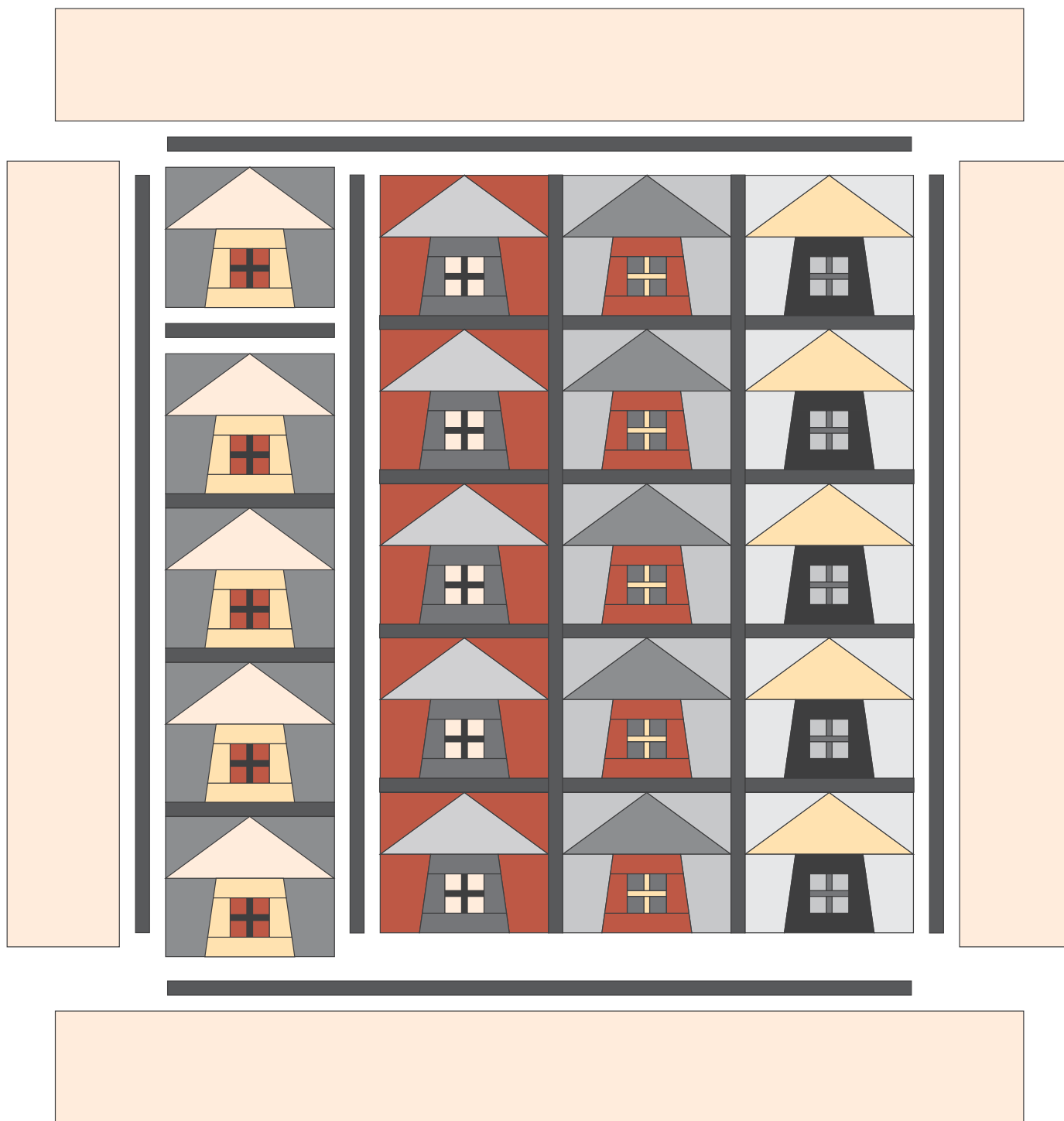


Pagoda Block – Make 20

# Kyoto Garden Quilt

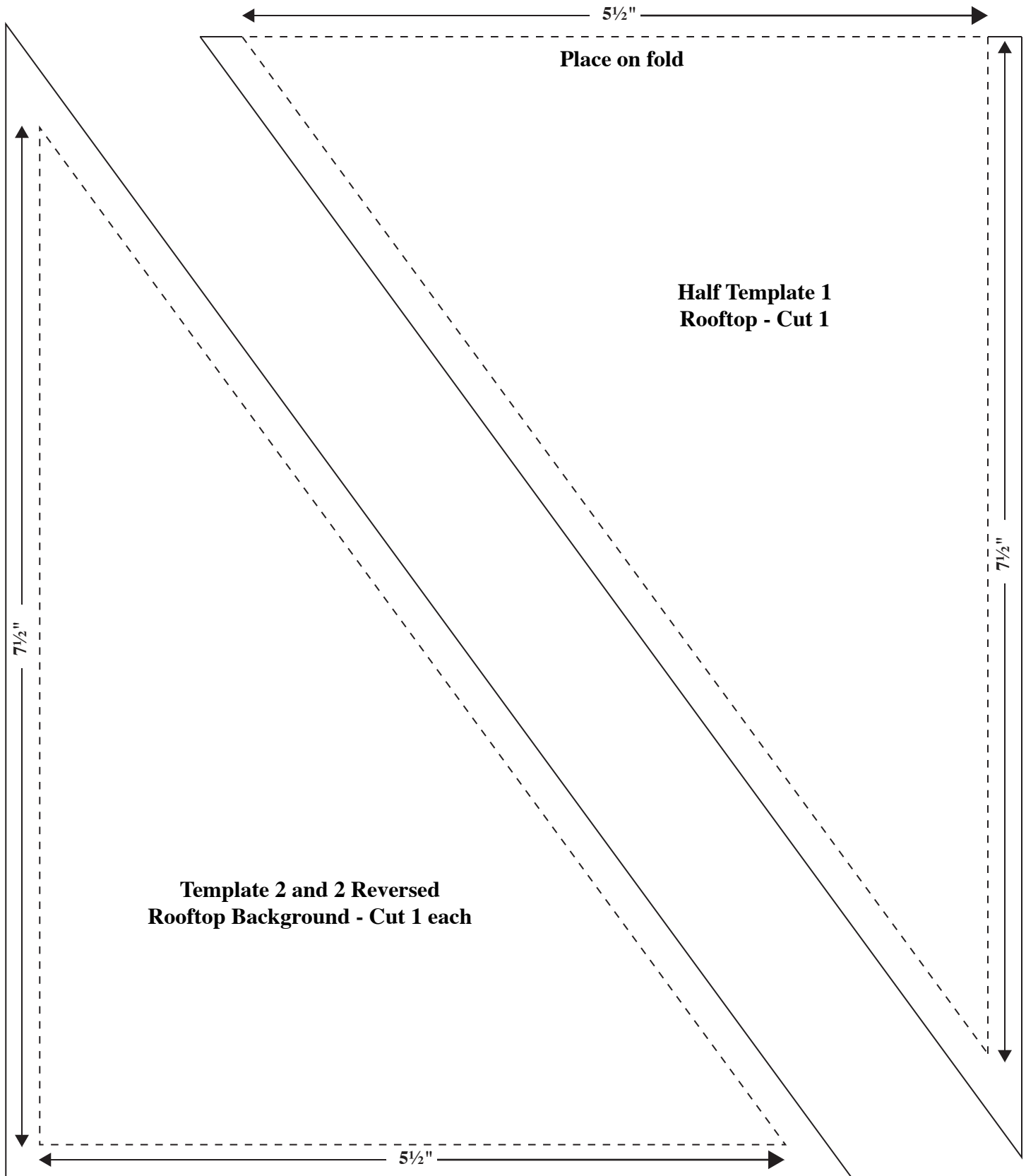
## Finishing the Quilt

6. Layer the quilt with batting and backing and baste. Quilt in the ditch around borders and block patches. Quilt around the printed motifs in the blocks and outer border. Bind to finish the quilt.



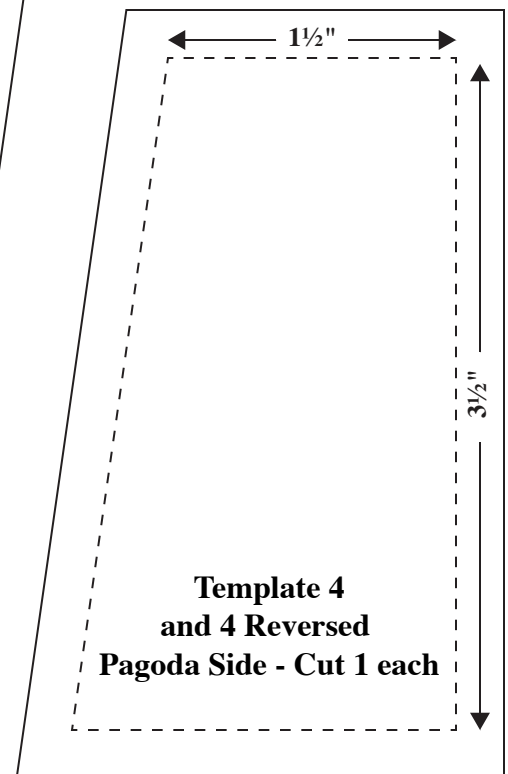
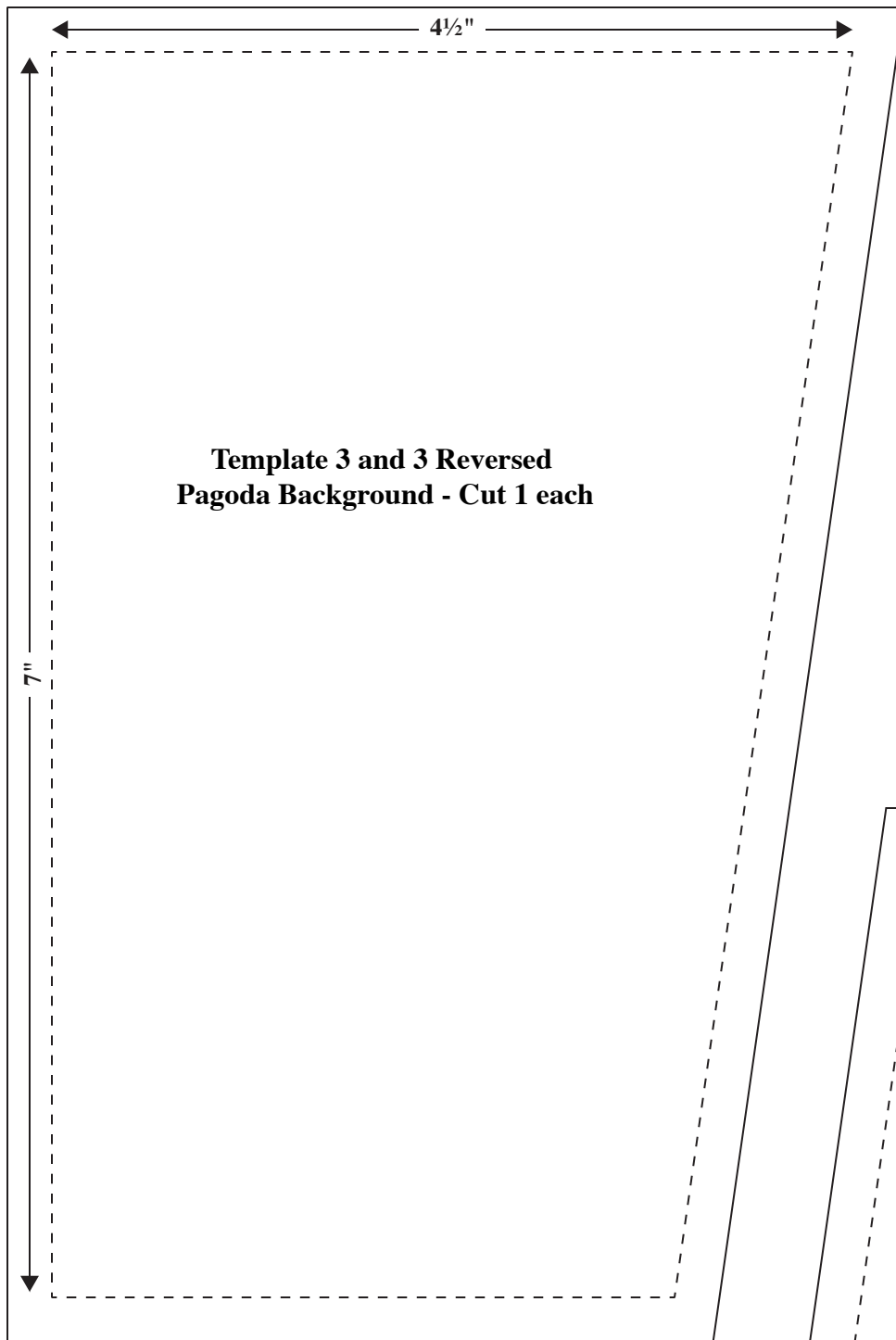
Quilt Assembly Diagram

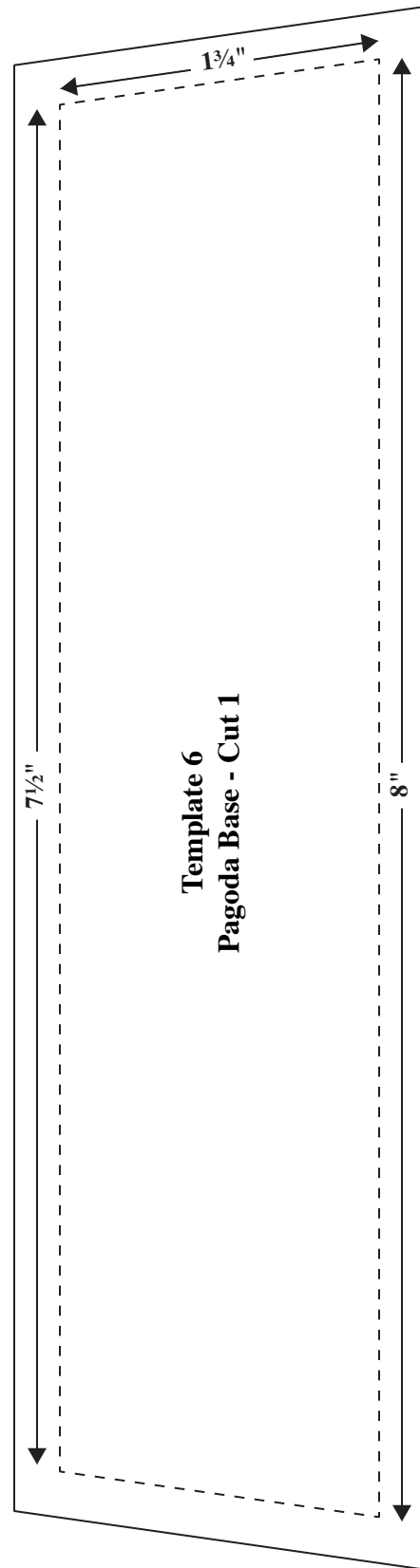
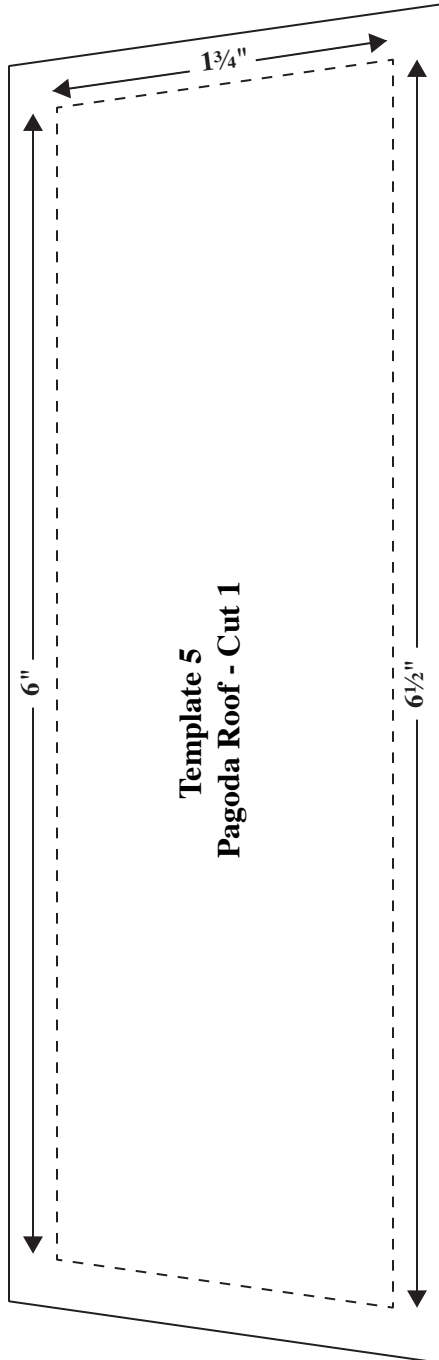
# Kyoto Garden Quilt



# Kyoto Garden Quilt

---



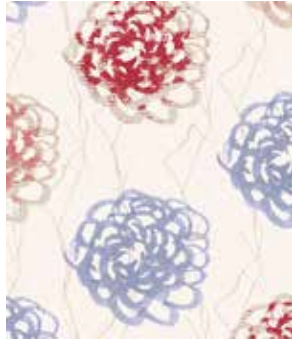


# Kyoto Garden

FABRICS BY LORI MASON



6033-C\*



6034-C\*



6035-C\*



6036-CR\*



6037-C\*



6037-CL\*



6038-C\*



6039-CN\*



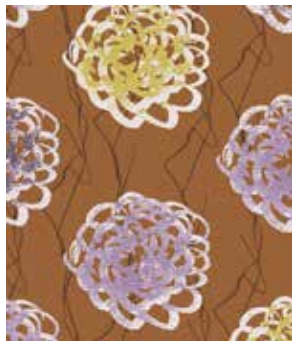
6040-C\*



1867-C1\*



6033-N\*



6034-N\*



6035-N\*



6036-NP\*



6037-N



6037-NL\*



6038-NG\*



6039-N\*



6040-N\*



5468-N1\*

\*Indicates fabrics used in quilt pattern. Fabrics shown are 25% of actual size.

andover



makower uk  
*The Henley Studio*

Free Pattern Download Available

1384 Broadway New York, NY 10018  
Tel. (800) 223-5678 • andoverfabrics.com