

Lilliana



69½" x 69½"

Featuring
The Lilliana Collection
by Gail Kessler



makower uk[®]

1384 Broadway · New York, NY 10018 · (800) 223-5678
www.andoverfabrics.com

Lilliana Quilt

Introducing Andover Fabrics new collection: Lilliana by Gail Kessler

Quilt designed by Gail Kessler

Welcome

Quick and cosmopolitan, this quilt beautifully showcases the floral border stripe. The no-block design goes together in a snap, making it possible to make the quilt top in less than a day.

Notice that the border stripe is fussy-cut. Two of the border strips are cut $\frac{1}{4}$ " into the plaid stripe on the left and two of the border strips are cut $\frac{1}{4}$ " into the plaid stripe on the right.

Quilt finishes
69½" x 69½"

Fabric Requirements and Cutting Directions

4120-K ⅞ yard Black/Cream Large Lily Print

Cut (1) 12½" square
Cut (4) 6½" x 24½" strips

4126-C ½ yard Cream/Yellow/Black Plaid

Cut (4) 6½" x 12½" rectangles

4125-K ⅞ yard* Black/Gray Geometric Print

Cut (4) 6½" squares
Cut (4) 10½" squares in half twice diagonally to make 16 quarter-square triangles
Cut (2) 10" squares in half diagonally to make 4 half-square triangles

4124-Y ½ yard Yellow/Gray Leaves Print

Cut (4) 6½" x 12½" rectangles

4121-K 2⅜ yards Black/Gray/Yellow Lily/Plaid Border Stripe

Cut (2) 9½" x 80" strips $\frac{1}{4}$ " into the plaid stripe on the left
Cut (2) 9½" x 80" strips $\frac{1}{4}$ " into the plaid stripe on the right

4122-Y ⅞ yard Yellow Lily Print

Cut (2) 6½" x 24½" strips
Cut (2) 6½" x 36½" strips

**Additional fabric required for binding.*

4123-C 4½ yards Light Gray/Cream Starflower Print (backing)

Cut and piece to fit quilt top with 4" overlap on all sides.

4125-K ¾ yard Black/Gray Geometric Print (binding)

Cut (8) 2½" x width of fabric strips

Assembling the Quilt Top

Note: Refer closely to Quilt Diagram and photo for following steps.

1. Sew 2 cream/yellow/black plaid 6½" x 12½" rectangles to sides of black/cream large lily print 12½" square. Stitch black/gray geometric print 6½" squares to ends of remaining 6½" x 12½" plaid rectangles. Sew to top and bottom.
2. Stitch yellow lily print 6½" x 24½" strips to sides. Sew 36½" lily print strips to top and bottom.

Note: Setting triangles are cut large to allow for trimming.

3. Sew geometric print 10½" quarter-square triangles to ends of all 4 black/cream large lily print 24½" strips in orientation shown to make pieced lily strips. In same manner, sew remaining quarter-square triangles to end of yellow/gray leaves print 12½" rectangles in orientation shown to make pieced leaves strips.
4. Stitch together pieced lily strip and pieced leaves strip, centering leaves strip, to make pieced unit. Make 4. Stitch 2 to sides of quilt center. Sew remaining pieced units to top and bottom.
5. Sew 10" half-square triangles to corners to complete quilt center. Trim quilt center as needed.
6. Fold border strips in half widthwise and crease to mark strip centers. With $\frac{1}{4}$ " plaid side **away** from quilt center and strips positioned with flowers oriented as shown in photo, stitch strips to quilt, beginning and ending $\frac{1}{4}$ " from corners. Miter corners and trim excess fabric.

Finishing the Quilt

7. Layer quilt with batting and light gray/cream starflower print backing. Quilt as desired. Bind with black/gray geometric print binding to finish the quilt.



Quilt Diagram

1384 Broadway
New York, NY 10018
(800) 223-5678
www.andoverfabrics.com

Lilliana

by Gail Kessler



4120-K*



4121-K*



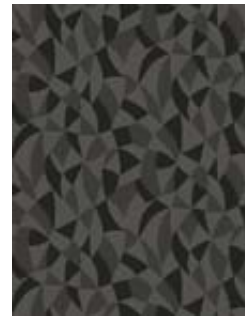
4122-Y*



4123-C*



4124-Y*



4125-K*



4126-C*



4120-T



4121-T



4122-L



4123-G



4124-T



4125-T



4126-T

*Indicates fabric used in quilt pattern. Fabrics shown are 20% of actual size.

Free Pattern Download Available at www.andoverfabrics.com