

LOTS OF DOTS



Fabrics by
Karen Stephens

Quilt designed by Karen Stephens

Quilt size: 51" x 51"

1384 Broadway • New York, NY 10018
(800) 223-5678 • www.andoverfabrics.com



makower uk[®]

Lots Of Dots Quilt

Introducing Andover Fabrics new collection: Lots of Dots by Karen Stephens

Quilt designed by Karen Stephens

Fabric Requirements

		Yardage	
Fabric A	blocks	1 1/8 yards	1867-L2
Fabric B	blocks	1/2 yard	5252-E
Fabric C	blocks, narrow border	1/2 yard	1867-E
Fabric D	blocks, outer border	1 yard	5247-B
Fabric E	blocks	1/4 yard	5249-B
Fabric F*	blocks, binding	7/8 yard	4992-B
Fabric F	backing	3 1/2 yards	4992-B

*includes binding

Quilt finishes: 51" x 51"
16 pieced blocks: 9" x 9"
4 pieced blocks: 6" x 6"

Retro is the word for this delightful quilt. It's loaded with images reminiscent of the 1950s. Two favorite blocks from yesteryear, the Log Cabin and the Churn Dash, come together to make an interesting quilt design that is filled with old-fashioned

Cutting Directions

Note: WOF designates the width of fabric from selvedge to selvedge (approximately 42" wide).

Fabric A Cut (8) squares 3 1/2" x 3 1/2"
Cut (3) strips 2" x WOF
Cut (16) squares 3 7/8" x 3 7/8" and cut in half once diagonally to make 32 half-square triangles
Cut (8) strips 1 1/2" x WOF and cut into the following:

- (8) 1 1/2" x 3 1/2"
- (8) 1 1/2" x 4 1/2"
- (8) 1 1/2" x 5 1/2"
- (8) 1 1/2" x 6 1/2"
- (8) 1 1/2" x 7 1/2"
- (8) 1 1/2" x 8 1/2"

Cut (3) strips 1 1/4" x WOF and cut into the following:

- (4) 1 1/4" x 2"
- (4) 1 1/4" x 2 3/4"
- (4) 1 1/4" x 3 1/2"
- (4) 1 1/4" x 4 1/4"
- (4) 1 1/4" x 5"
- (4) 1 1/4" x 5 3/4"

Fabric B Cut (3) strips 2" x WOF
Cut (16) squares 3 7/8" x 3 7/8" and cut in half once diagonally to make 32 half-square triangles

Fabric C Cut (8) squares 3 1/2" x 3 1/2"
Cut (4) squares 2" x 2"
Cut (2) strips 2" x 36 1/2"
Cut (2) strips 2" x 39 1/2"

Fabric D Cut (2) strips 1 1/2" x WOF and cut into the following:

- (8) 1 1/2" x 4 1/2"
- (8) 1 1/2" x 5 1/2"

Cut (1) strip 1 1/4" x WOF and cut into the following:

- (4) 1 1/4" x 2 3/4"
- (4) 1 1/4" x 3 1/2"

Cut (4) strips 6 1/2" x 39 1/2"

Fabric E Cut (3) strips 1 1/2" x WOF and cut into the following:

- (8) 1 1/2" x 6 1/2"
- (8) 1 1/2" x 7 1/2"

Cut (1) strip 1 1/4" x WOF and cut into the following:

- (4) 1 1/4" x 4 1/4"
- (4) 1 1/4" x 5"

Fabric F Cut (4) strips 1 1/2" x WOF and cut into the following:

- (8) 1 1/2" x 8 1/2"
- (8) 1 1/2" x 9 1/2"

Cut (2) strips 1 1/4" x WOF and cut into the following:

- (4) 1 1/4" x 5 3/4"
- (4) 1 1/4" x 6 1/2"

Cut (6) strips 2 1/2" x WOF for binding

Backing Cut (2) panels 42" x 59" and piece to fit quilt top with 4" overlap on all sides

Lots of Dots Quilt

Making Churn Dash Blocks

1. Sew a 2"-wide fabric A strip to a 2"-wide fabric B strip along the length to make an A-B strip set. Press seam toward the fabric B strip. Repeat to make three A-B strip sets. Crosscut the strip sets into (32) 3½" A-B units referring to Diagram 1.
2. Sew a fabric A triangle to a fabric B triangle along the diagonal to make an A-B square. Press seam toward the fabric B triangle. Repeat with remaining fabric A and B triangles to make a total of 32 A-B squares.
3. To complete one Churn Dash block, sew an A-B unit between two A-B squares to make a top row, referring to Diagram 2. Press seams toward the A-B unit. Repeat to make a bottom row.
4. Sew an A-B unit to opposite sides of a 3½" fabric A square to make the center row, again referring to Diagram 2. Press seams toward the A-B units.
5. Sew the center row between the top and bottom rows to complete the block, again referring to Diagram 2. Press seams in one direction.
6. Repeat steps 3–5 to complete a total of eight Churn Dash blocks.

Making the Log Cabin Blocks

7. To complete one Large Log Cabin block, select one 3½" fabric C square and one 1½"-wide fabric A, D, E and F strip in each size. Sew the shortest fabric A strip to one side of C and continue adding strips to the sides of C in numerical order referring to Diagram 3. Press seams toward strips as added. Repeat to make a total of eight Large Log Cabin blocks.
8. Complete four Small Log Cabin blocks in the same manner as the Large Log Cabin blocks using the 1¼"-wide strips and

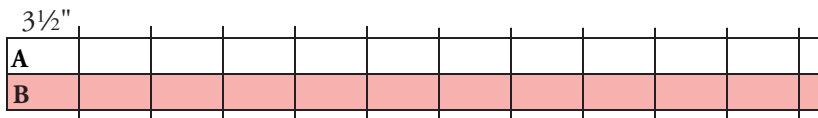
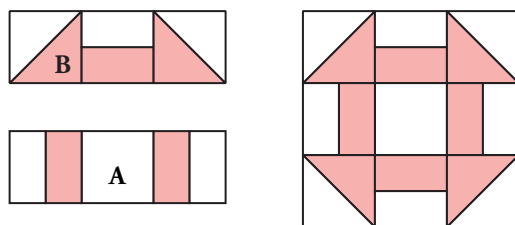
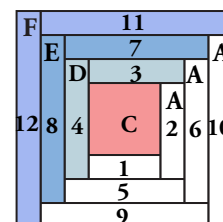


Diagram 1



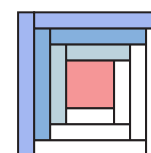
Make 8

Diagram 2



Make 8

Diagram 3



Make 4

Diagram 4

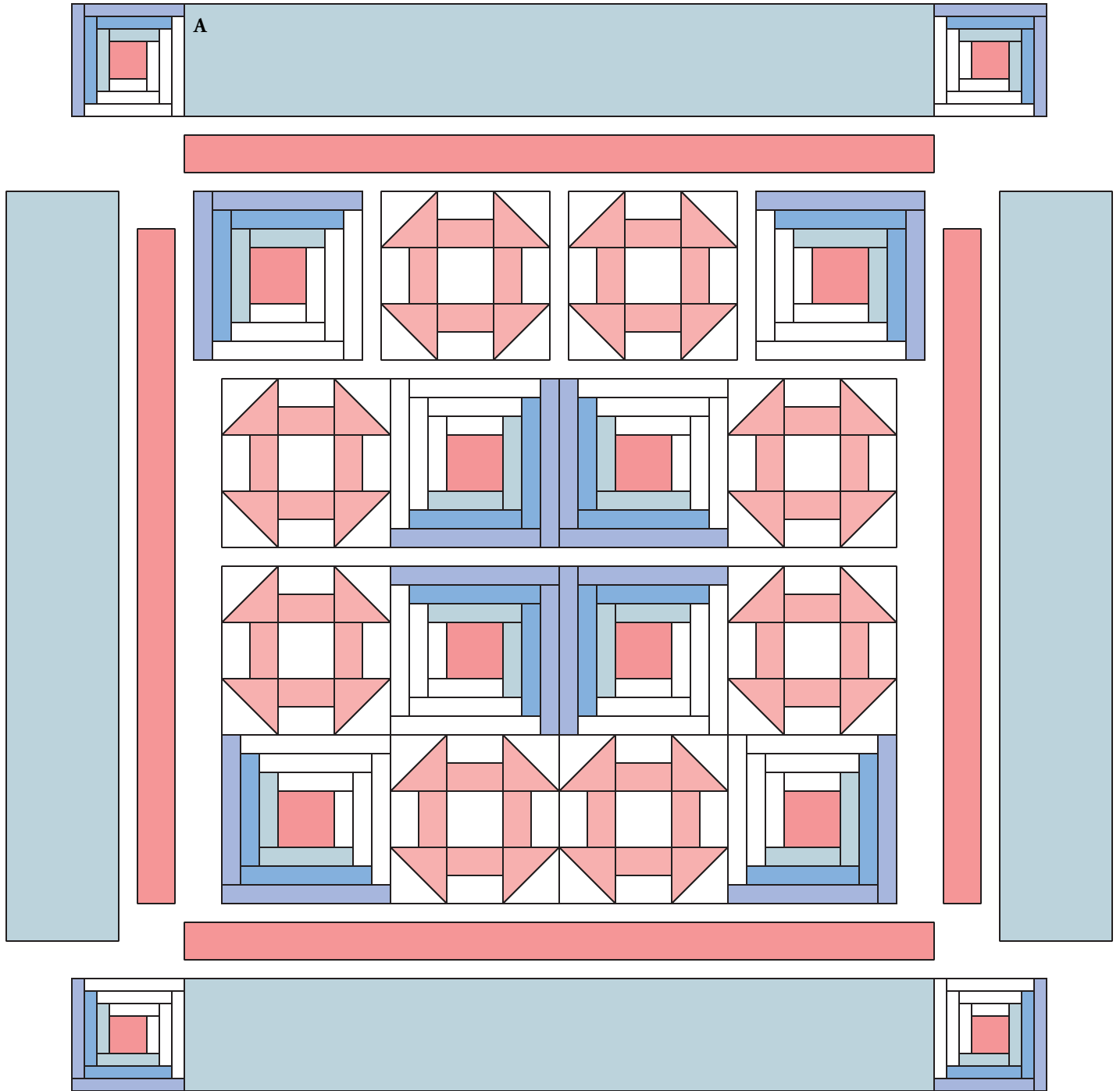
Quilt Assembly

9. Refer to the Assembly Diagram and the following steps for piecing the quilt center.
10. Join two Churn Dash blocks and add a Large Log Cabin block to each end to make a row referring to the Assembly Diagram. Press seams in one direction. Repeat to make two rows.
11. Join two Large Log Cabin blocks and add a Churn Dash block to each end to make a row referring to the Assembly Diagram. Press seams in one direction. Repeat to make two rows.
12. Alternate and join the rows referring to the Assembly Diagram to complete the pieced center. Press seams in one direction.
13. Sew a 2" x 36½" fabric C strip to opposite sides and a 2" x 39½" strip to the top and bottom of the pieced center. Press seams toward the fabric C strips.
14. Sew a 6½" x 39½" fabric D strip to opposite sides of the pieced center. Press seams toward the fabric D strips.
15. Sew a Small Log Cabin block to each end of each remaining 6½" x 39½" fabric D strip. Press seams away from the blocks. Sew these strips to the remaining sides of the pieced center to complete the pieced top. Press seams toward the fabric D strips.

Finishing the Quilt

16. Layer quilt top with batting and backing. Quilt in the ditch of seams and as desired. Bind to finish the quilt.

Lots of Dots Quilt



Quilt Diagram

Lots of Dots

by Karen Stephens



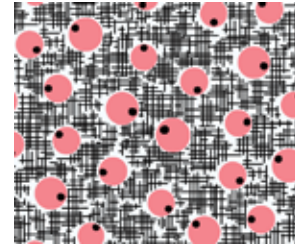
5246-B



5246-N



5247-Y



5248-K



5249-K



5252-E*



4992-R



5248-R



1867-L2*



1867-Y6



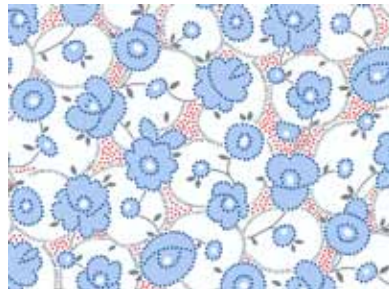
1867-E*



1867-R1



5252-G



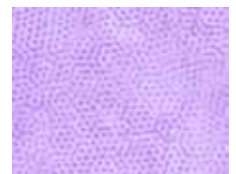
5247-B*



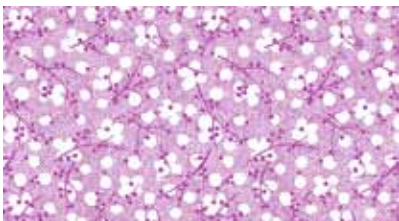
5249-B*



1867-L2



1867-P14



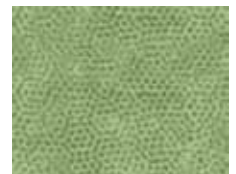
5250-P



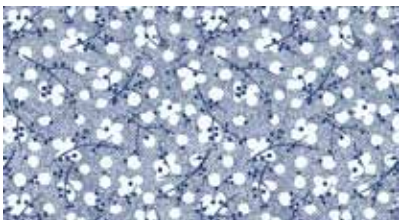
5251-P



4992-P



1867-G19



5250-B



5251-G



4992-B*



1867-B1

*Indicates fabric used in quilt pattern. Fabrics shown are 40% of actual size.