

Luna Lounge

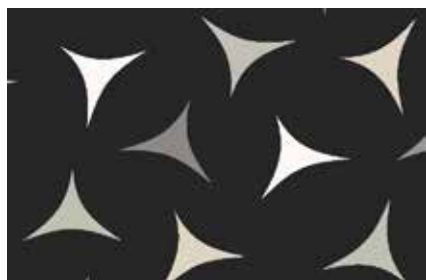
BY CAROL VAN ZANDT



Vortex quilt design by:
Marian Gallian for
Pink Hippo Quilts

Quilt Size: 60" x 60"

andoverfabrics.com



About Luna Lounge

Come to the Luna Lounge! Inviting retro modern patterns with crescents and triangle shapes create a playful and relaxing vibe. — *Carol Van Zandt*

andover



makower uk

Free Pattern Download Available

1384 Broadway New York, NY 10018
Tel. (800) 223-5678 • andoverfabrics.com

Vortex Quilt



Introducing Andover Fabrics new collection: **LUNA LOUNGE** by Carol Van Zandt
Quilt designed by Marian Gallian of Pink Hippo Quilts

Quilt finishes 60" x 60"

Pop-art imagery brings a contemporary feel to this easier-than-it-looks quilt. Complicated curved piecing has been turned into quick and easy fusible appliqué to make this wall quilt easy enough for a beginning quilter.

Cutting Directions

Note: Read assembly directions before cutting patches. Borders are cut the exact lengths required plus 1/4" seam allowances. WOF designates the width of fabric from selvedge to selvedge (approximately 42" wide).

Fabric A

Fussy-cut (4) rectangles 7 1/2" x 29 1/4" lengthwise along the selvedge (read Step 1)

Fussy-cut (4) rectangles 7 5/8" x 15 1/4" (read Step 1)

Fabric B

Cut (2) borders 10 1/2" x 60 1/2", cut lengthwise

Cut (2) borders 10 1/2" x 40 1/2", cut lengthwise

Cut (7) strips 2 1/2" x WOF for binding

Fabric Requirements

		Yardage	Fabric
Fabric A	center	2 3/4 yards	7714-N
*Fabric B	border	2 1/2 yards	7717-NK
Fabric C	border	1 1/3 yards	7716-N
Fabric D	appliqué	1 1/4 yards	7718-N
Backing		4 yards	7715-NK

*includes binding

Fabric C

Cut (2) borders 6 1/2" x 40 1/2", cut WOF

Cut (2) borders 6 1/2" x 28 1/2", cut lengthwise

Fabric D

Cut (20) template 2

Cut (24) template 1

Backing

Cut (2) panels 34" x 68", pieced to fit quilt top with overlap on all sides

Making the Quilt

1. Trim the outer selvages from Fabric A. Refer to the Fabric A Cutting chart and fussy-cut the 8 rectangles. Referring to Diagram 1, measure and mark 7 1/2" from the top corners of a 29 1/4" rectangle, noting the fabric selvedge edge. Trim each end by cutting from the bottom corners to the marks. Repeat on the other 3 rectangles.
2. Referring to Diagram 2, mark the center of the long edge of a 15 1/4" rectangle, noting the selvedge edge. Cut from the bottom corners to the center mark. Repeat on the other 3 rectangles.

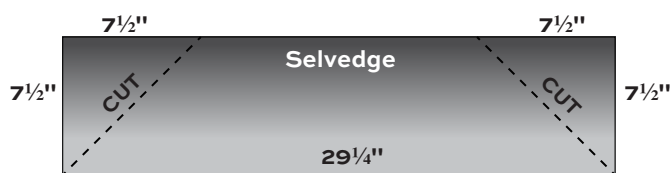


Diagram 1

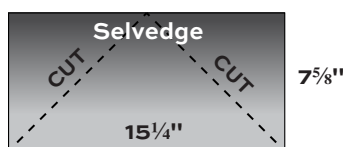
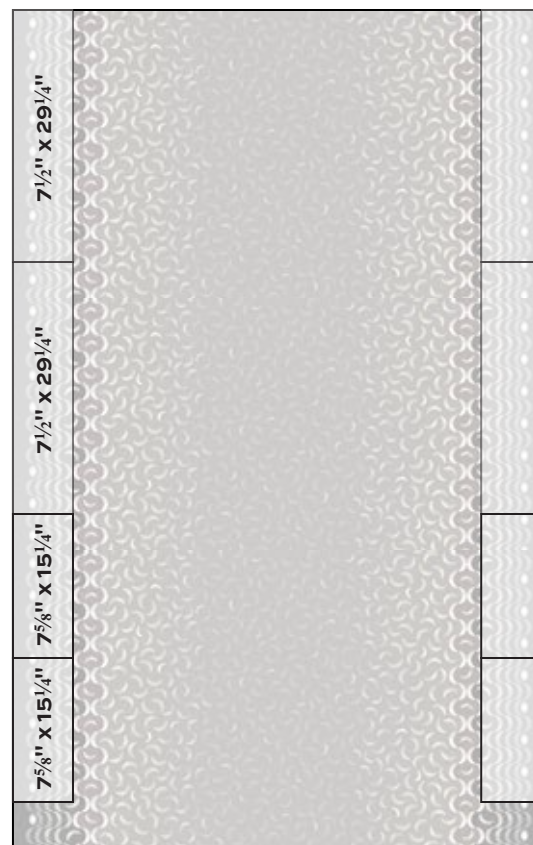


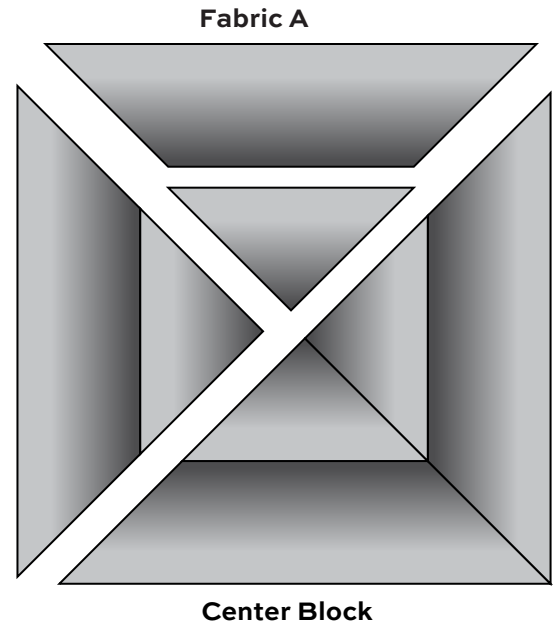
Diagram 2



Fabric A Cutting

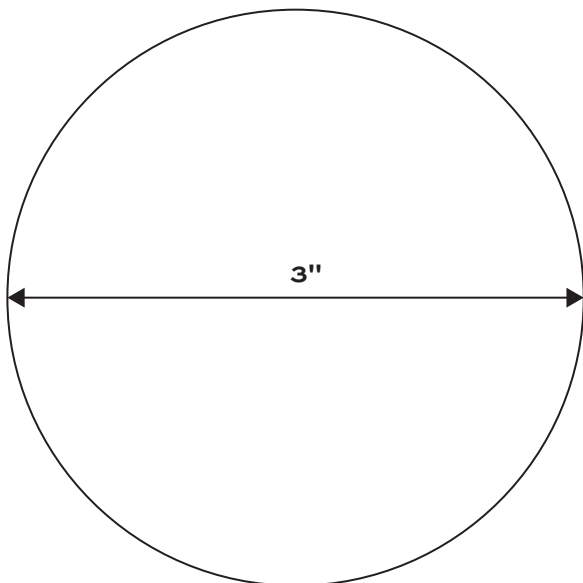
Vortex Quilt

3. Referring to the Center Block diagram, sew a patch from Step 1 to a patch from Step 2 to make a triangle. Repeat to make 4 triangles. Sew 2 triangles to make half the block. Repeat. Sew the 2 halves together.
4. Prepare the circles (Template 1) and the outer border appliqué (Template 2) for fusible appliqué. Lightly press each border strip lengthwise and crosswise to find the middle for appliqué placement.
5. Referring to the Quilt Diagram, position and fuse 5 Template 1 circles on each short Fabric C border, distributing them evenly. Finish the edges of circles with matching thread, or use an invisible thread with a blind appliqué machine stitch. Join short Fabric C borders to the sides. Position and fuse 7 circles on each long Fabric C border, distributing them evenly. Hint: You may want to fuse the circles to the ends of the long borders after borders are sewn onto the quilt. This will make alignment with the side border circles easier. Finish the edges of the circles. Join longer Fabric C borders to the top and bottom.
6. Referring to the Quilt Diagram, position and fuse 4 Template 2 patches to short Fabric C borders. Finish the edges as you finished the circles. Sew to the sides of the quilt. Position, fuse, and finish 6 Template 2 patches to long Fabric C borders. Sew to the top and bottom.

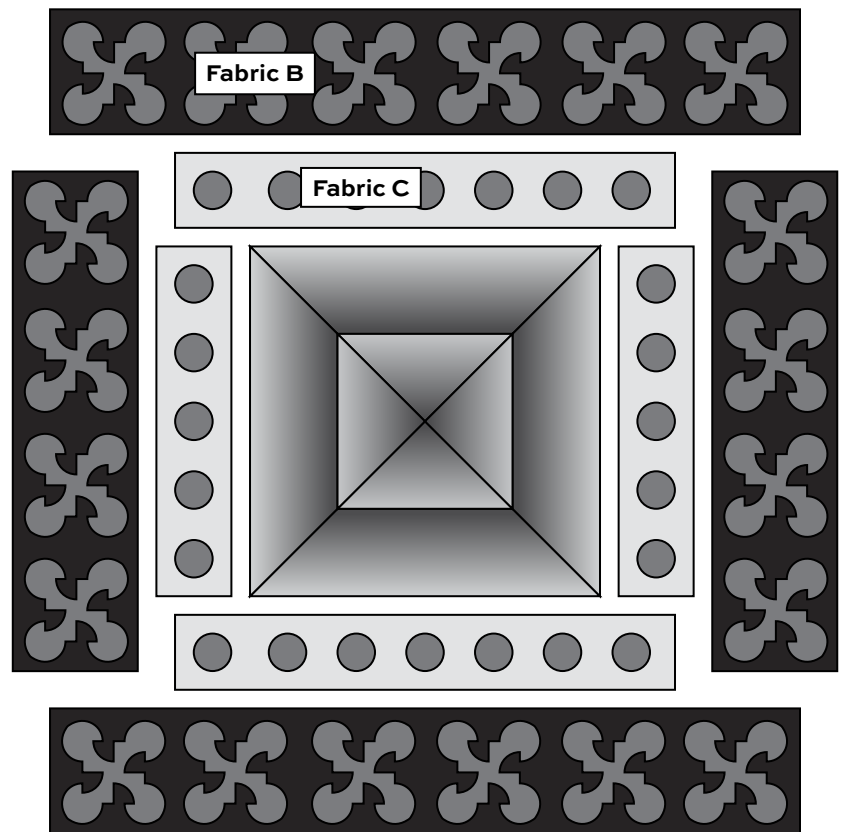


Finishing the Quilt

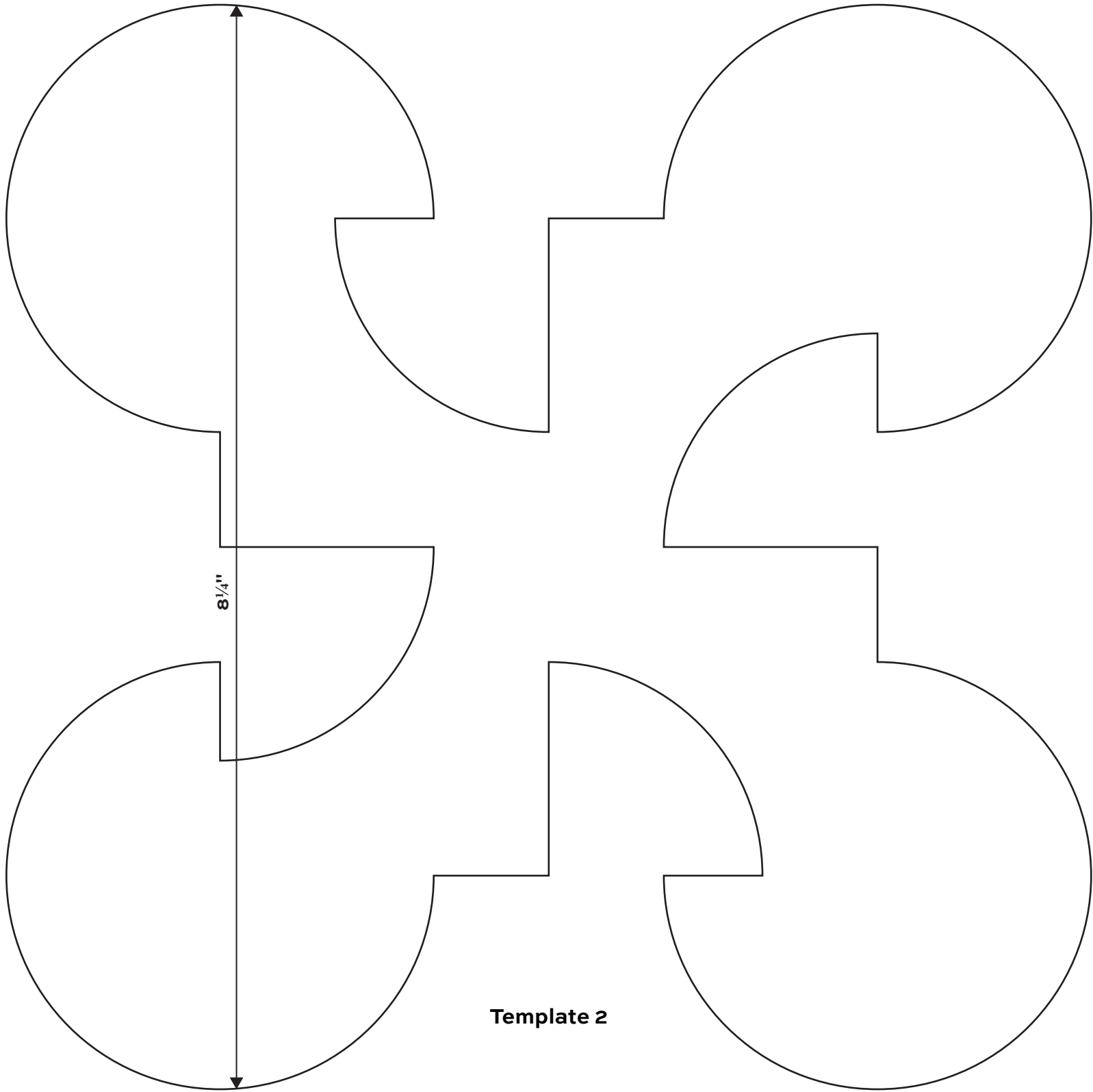
7. Layer the quilt with batting and backing and baste. Quilt in the ditch around the center, the borders, and appliqué patches. Bind to finish the quilt.



Template 1



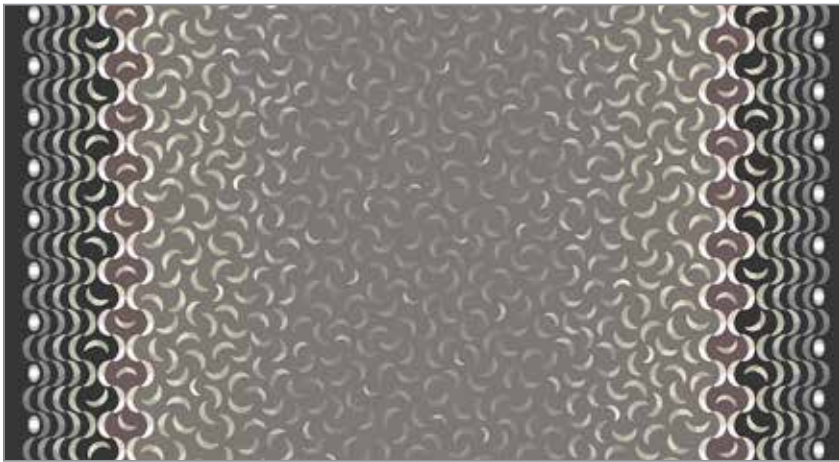
Quilt Diagram



Template 2

Luna Lounge

BY CAROL VAN ZANDT



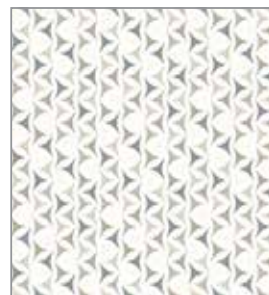
7714-N*



7715-NK*



7715-BK



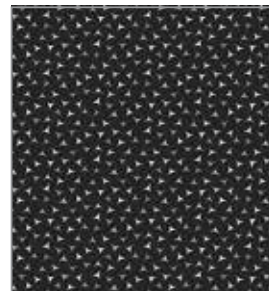
7716-N*



7716-B



7714-B



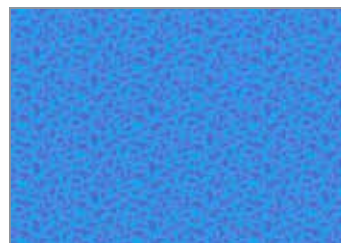
7717-NK*



7717-BK



7718-*N



7718-B



7719-NL



7719-B

*Indicates fabrics used in quilt pattern. Fabrics shown are 10% of actual size.

andover

•
•
•
•
•
makower uk
The Henley Studio

Free Pattern Download Available

1384 Broadway New York, NY 10018
Tel. (800) 223-5678 • andoverfabrics.com