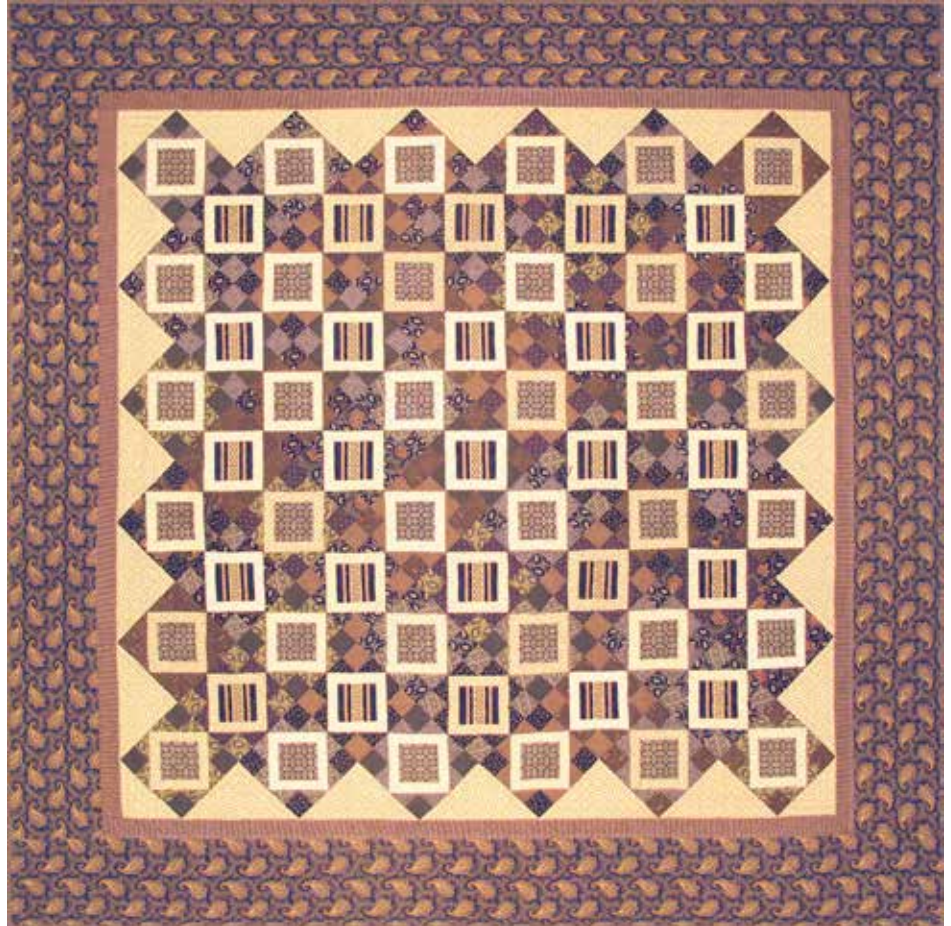


# Madison Manor

FABRICS BY JO MORTON



Warm Wishes Quilt  
Designed and made by:  
**Candy Hargrove**

Quilted by: **Maggi Honeyman**

Quilt Size: **67" x 67"**

[andoverfabrics.com](http://andoverfabrics.com)



## About Madison Manor

I'm always looking for medium to large beautiful designs. I found the beautiful paisley design (mother print) and was fortunate to find an unusual stripe to accompany it. I always seem to be able to find companions to "go with." The red/green colorway is perfect for the holidays and I also wanted to do a neutral second colorway for a change. I love the results and having fun sewing with it! — *Jo Morton*

andover



makower uk  
*The Henley Studio*

Free Pattern Download Available

1384 Broadway New York, NY 10018  
Tel. (800) 223-5678 • [andoverfabrics.com](http://andoverfabrics.com)

# Warm Wishes



Introducing Andover Fabrics new collection: **Madison Manor** and **Sunday Best** by Jo Morton  
Quilt designed and made by Candy Hargrove

Quilt finishes 67" x 67"  
36 Block 1: 6" x 6"  
25 Block 2: 6" x 6"

*Elegant paisleys and unusual stripes in muted tones are showcased in this lovely bed topper. The diagonal setting fools the eye: Where exactly is the block? The light strips framing each block center add a striking design element, and the printed stripe adds more interest.*

## Fabric Requirements

		Yardage	Fabric
<b>Fabric A</b>	center squares	½ yard	6020-KG
<b>Fabric B</b>	outer border	2 yards	7004-K
<b>Fabric C</b>	center squares	½ yard	7005-K
<b>Fabric D</b>	setting triangles	¾ yard	7009-KN
<b>*Fabric E</b>	blocks, border	1 yard	7010-KN
<b>5 Lights</b>	blocks	fat ¼ ea.	
		5687-N, 5687-L, 5692-N, 5693-L, 7009-G	
<b>5 Mediums</b>	blocks	fat ¼ ea.	
		6028-G, 6028-K, 6028, KY, 7006-G, 7007-KC	
<b>6 Darks</b>	blocks	fat ¼ ea.	
		6024-G, 6028-KN, 7006-K, 7006-KN, 7008-K, 7010-G	
<b>Backing</b>		4¾ Yards	6028-KY

\*includes binding

## Cutting Directions

**Note:** Read assembly directions before cutting patches. All measurements are cut sizes and include ¼" seam allowances. A fat ¼ is an 18" x 20"-22" cut. Borders are cut the exact lengths required plus ¼" seam allowances. WOF designates the width of fabric from selvedge to selvedge (approximately 42" wide).

**Fabric A** Fussy-cut (36) center squares 3¼" x 3¼"

**Fabric B** Cut (2) top/bottom borders 7" x 67½", cut lengthwise  
Cut (2) side borders 7" x 54½", cut lengthwise

**Fabric C** Fussy-cut (25) center squares 3¼" x 3¼"

**Fabric D** Cut (5) squares 10" x 10", cut in half diagonally twice to make 20 quarter-square side triangles (cut slightly oversize)  
Cut (2) squares 5½" x 5½", cut in half diagonally to make 4 half-square corner triangles (cut slightly oversize)  
Cut (22) strips 1¼" x 4¾" for blocks  
Cut (22) strips 1¼" x 3¼" for blocks

**Fabric E** Cut (7) strips 2½" x WOF for binding  
Cut (6) strips 2" x WOF, pieced to make the following:  
(2) top/bottom borders 2" x 54½"  
(2) side borders 2" x 51½"  
Cut (24) squares 2⅜" x 2⅜", cut in half diagonally to make 48 half-square triangles  
Cut (20) squares 2" x 2"

**5 Lights** From each:  
Cut (20) strips 1¼" x 4¾"  
Cut (20) strips 1¼" x 3¼"

**5 Mediums** From each:  
Cut (24) squares 2⅜" x 2⅜", cut in half diagonally to make 48 half-square triangles  
Cut (16) squares 2" x 2"

**5 Darks** From each:  
Cut (16) squares 2⅜" x 2⅜", cut in half diagonally to make 32 half-square triangles  
Cut (24) squares 2" x 2"

**1 Dark** Cut (20) squares 2⅜" x 2⅜", cut in half diagonally to make 40 half-square triangles  
Cut (24) squares 2" x 2"

**Backing** Cut (2) panels 38" x 75", pieced to fit quilt top with overlap on all sides

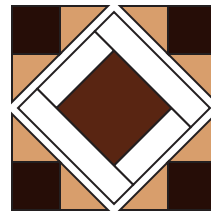
# Warm Wishes Quilt

## Making the Quilt

1. Referring to the Block 1 diagram, sew 2 short light strips, and then 2 longer light strips around a center Fabric A  $3\frac{1}{2}$ " square. Sew medium  $2\frac{3}{8}$ " triangles to adjacent sides of a dark 2" square. Make 4 corner units like this. Sew to the block center. The block should measure  $6\frac{1}{2}$ " square from edge to edge. If it does not, adjust your sewing and/or pressing techniques. Make 36 blocks like this.
2. Referring to the Block 2 diagram, repeat the steps above, reversing the medium and dark prints as shown. Be sure to orient the fussy-cut Fabric C striped center the same in each block. Make 25.
3. Lay out Block 1s and Block 2s in diagonal rows as shown in the Quilt Assembly. Rearrange the blocks as desired so the fabrics are dispersed across the quilt in a pleasing manner. Rotate the Block 2s so the striped center squares are oriented the same direction. Position Fabric D side triangles at the ends of the rows, turning as needed. Note: the setting triangles are cut slightly oversize to allow the blocks to "float" and ensure that points won't get cut off when borders are added. Once you are satisfied, sew the blocks into rows. Sew a Fabric D corner triangle to each corner.
4. Trim the outer edges evenly as needed to square the quilt. Be sure there is a generous  $\frac{1}{4}$ " seam allowance beyond the points of the blocks.
5. Sew long inner borders to the sides, and then sew short inner borders to the top and bottom. Repeat with the outer borders, noting the orientation of the print.

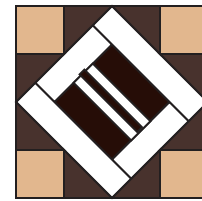
## Finishing the Quilt

6. Layer the quilt with batting and backing and baste. Quilt in the ditch around borders and block patches. Quilt around the printed motifs in the blocks and outer border. Bind to finish the quilt.



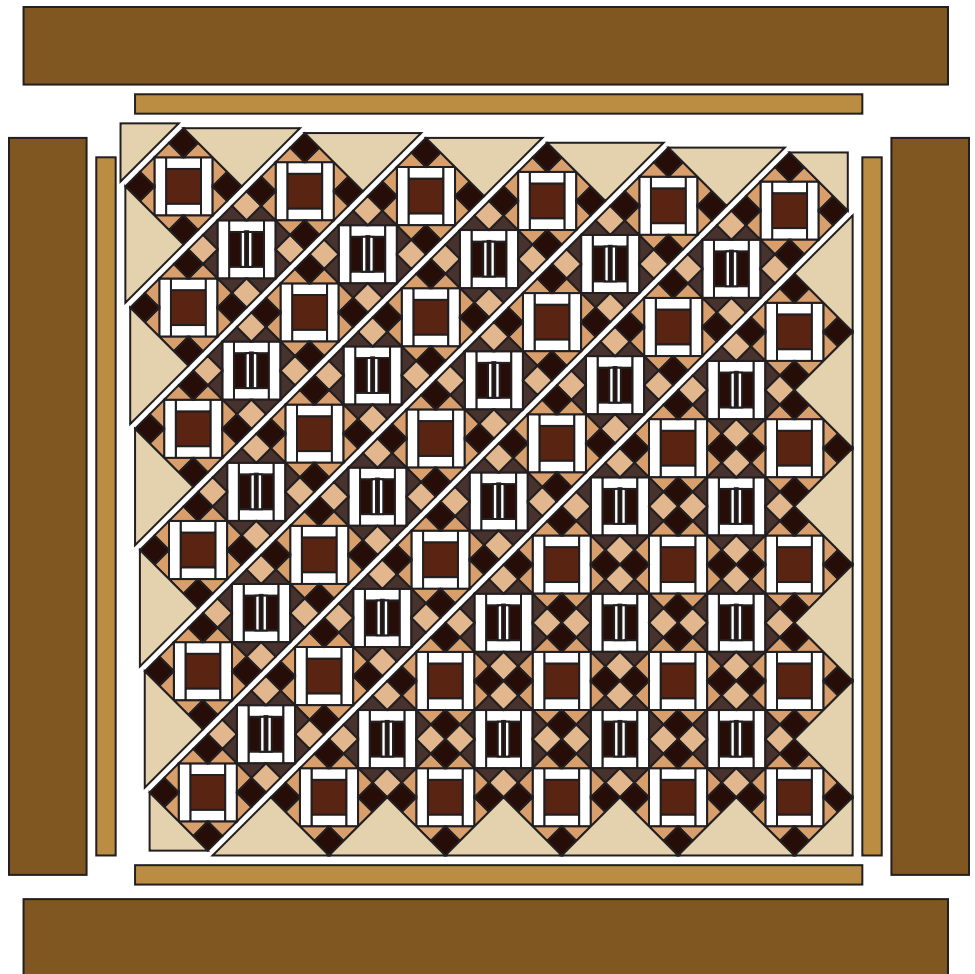
Make 36

Block 1



Make 25

Block 2



Quilt Assembly Diagram

# Madison Manor

FABRICS BY JO MORTON



7004-G



7006-G\*



7007-GR



7008-GK



7009-G\*

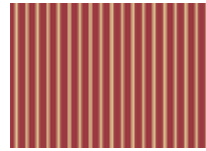
Blend with fabrics from **Sunday Best** by Jo Morton



7005-GR



7010-G\*



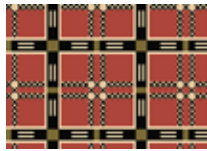
7010-GR



6028-G\*



5687-L\*



6020-GR



6024-G\*



6028-GR



5693-L\*



7004-K\*



7006-K\*



7006-KN\*



7007-KC\*



7008-K\*

Blend with fabrics from **Sunday Best** by Jo Morton



7005-K\*



7009-KN\*



7010-KN\*



6028-K\*



5687-N\*



6020-KG\*



6028-KN\*



6028-KY\*



5692-N\*

\*Indicates fabrics used in quilt pattern. Fabrics shown are 50% of actual size.

andover



makower uk  
*The Henley Studio*

Free Pattern Download Available

1384 Broadway New York, NY 10018  
Tel. (800) 223-5678 • andoverfabrics.com