

Mix It Up Quilt



Designed & made
by Candy Hargrove
Quilted by Maggi Honeyman
Quilt size: 67½" x 76"

————— *Featuring* —————
Cocoa Express, Indigo Berries,
Ravenwood, and Toast II Fabrics by Jo Morton



Mix It Up Quilt

Combining Andover Fabrics collections:

Indigo Berries, Ravenwood, Cocoa Express and Toast II by Jo Morton

Quilt designed and made by Candy Hargrove and quilted by Maggi Honeyman

Many antique quilts were made with scraps. The tiniest piece of fabric was not wasted. In *Mix It Up*, four reproduction fabric collections combine to give the quilt that antique scrappy look.

Quilt finishes 67½" x 76"
56 pieced blocks 6" x 6"

Fabric Requirements and Cutting Directions

Note: Border measurements are given in the exact lengths required, including ¼" seam allowances. WOF designates the width of fabric from selvedge to selvedge (approximately 42" wide). A fat eighth is a 9" x 21" cut of fabric.

4878-K 2¾ yards (border)

Cut (2) strips 4½" x 72" along the length of the fabric with stripe centered

Cut (2) strips 4½" x 81" along the length of the fabric with stripe centered

4884-K ⅔ yard (side and corner triangles)

Cut (7) squares 9¾" x 9¾" and cut each twice diagonally to make side triangles

Cut (2) squares 5½" x 5½" and cut each in half diagonally to make corner triangles

3993-K ⅔ yard (binding)

Cut (8) strips 2½" x WOF

¼ yard of each of the following (piecing):

4244-LN 4233-L 4233-LN 4229-LN

4241-YN 4243-LR 4245-LO 4246-N

From each:

Cut (36) strips 1½" x 4½"

1 fat eighth of each of the following (piecing):

4877-N 4878-N 4880-N 4881-N 4882-N 4883-N 4885-N

4886-N 4887-N 4888-N 4889-N 4891-N 4895-N 4877-B

4878-B 4879-B 4880-B 4881-B 4882-B 4883-B 4885-B

4887-B 4888-B 4889-B 4891-B 4892-B 4895-B 4233-K

2474-K 3997-K 3998-K 4879-K 4880-K 4885-K 4886-L

4888-K 4890-K

From each of 30 fabrics:

Cut (1) square 6⅞" x 6⅞" and cut in half diagonally to make setting triangles

Cut (2) strips 2½" x 14"

Cut (1) strip 1½" x 14" and cut (9) 1½" squares from each strip

From each of the remaining 7 fabrics:

Cut (2) squares 6⅞" x 6⅞" and cut in half diagonally to make setting triangles

Cut (1) strip 1½" x 7" and cut (4) 1½" squares from each strip

*Additional fabric required for backing:

4885-K 4¾ yards (backing)

Cut (2) panels 84" x WOF and piece to fit quilt top with 4" extending on all sides

Making Framed Four-Patch Blocks

1. Referring to Diagram 1 for steps 1 and 2, sew two contrasting $2\frac{1}{2}$ " x 14" strips together along length to make a strip set. Press seams. Repeat to make a second identical strip set.
2. Cut the strip sets into eight $2\frac{1}{2}$ " segments total.
3. Join two segments to make a four-patch unit referring to Diagram 2. Press seams. Repeat to make four four-patch units total.
4. Repeat steps 1–3 with all $2\frac{1}{2}$ " x 14" strips to make 56 four-patch units total.
5. Select four matching $1\frac{1}{2}$ " x $4\frac{1}{2}$ " strips and four matching $1\frac{1}{2}$ " squares.
6. Sew a strip to opposite sides of one four-patch unit. Press seams. Sew a square to each end of the two remaining strips. Press seams. Sew a strip to the remaining sides of the four-patch unit to complete one Framed Four-Patch block, referring to Diagram 3. Press seams.
7. Repeat steps 5 and 6 to make 56 Framed Four-Patch blocks total. **Note:** You will have leftover four-patch units, $1\frac{1}{2}$ " x $4\frac{1}{2}$ " strips and $1\frac{1}{2}$ " squares.

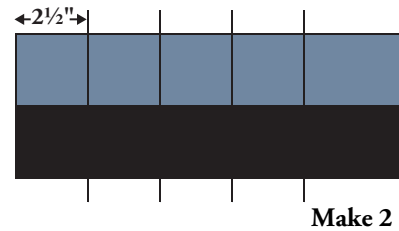


Diagram 1

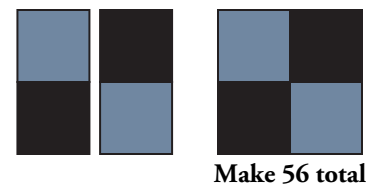


Diagram 2

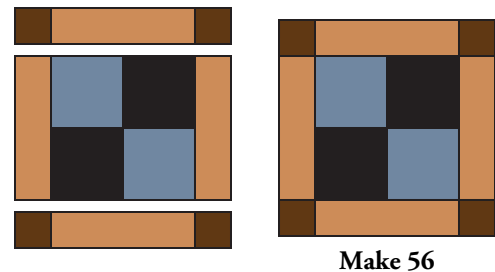


Diagram 3

Quilt Assembly

8. Select two setting triangles and join along the diagonal to make a setting square referring to Diagram 4. Press seams. Repeat with remaining setting triangles to make 42 setting squares total.
9. Arrange and join the setting squares in diagonal rows with the Framed Four-Patch blocks and side and corner triangles referring to the Quilt Assembly Diagram. Press seams away from blocks.
10. Join the stitched rows to complete the pieced center. Press seams.
11. Center and sew the 81" border strips to opposite long sides and the 72" strips to the top and bottom of the pieced center, stopping stitching $\frac{1}{4}$ " from each corner of the pieced center. Miter the corners, matching stripes at seams, and trim away excess fabric to complete the pieced top. Press seams. **Note:** Border strips are cut a bit longer than needed to allow for mitering corners.

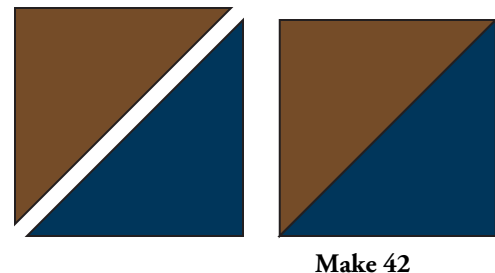
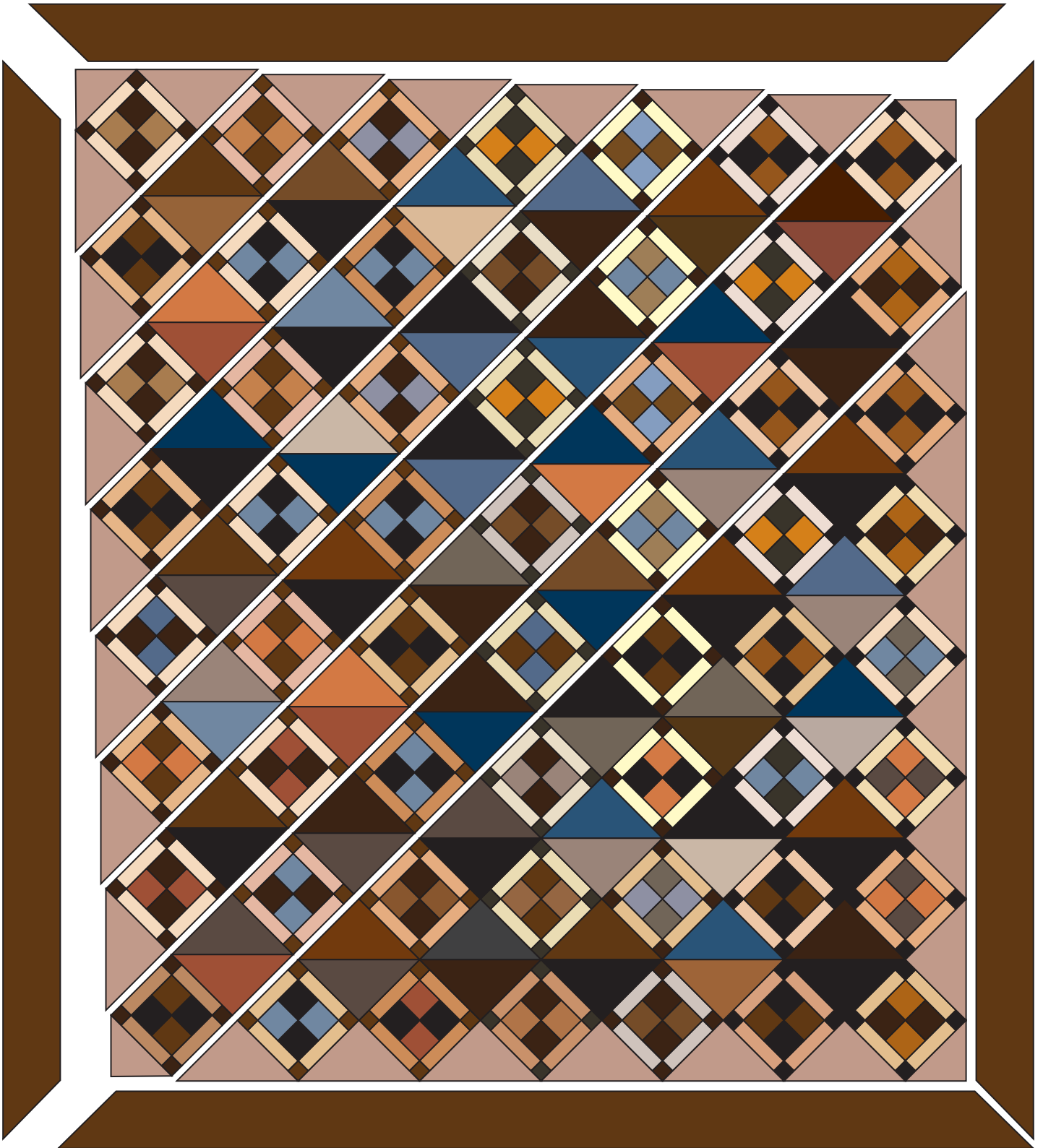


Diagram 4

Finishing the Quilt

12. Layer quilt top with batting and backing. Quilt in the ditch of seams and as desired. Bind to finish the quilt.



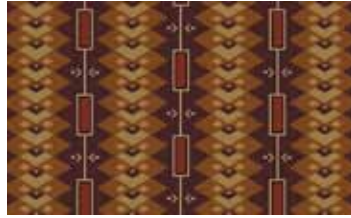
Quilt Assembly Diagram

Cocoa Express

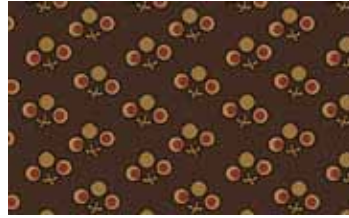
by Jo Morton



4877-N



4878-N



4880-N



4881-N



4882-N



4883-N



4885-N



4886-N



4887-N



4888-N



4889-N



4891-N



4895-N

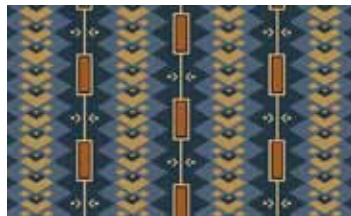
All fabrics used in quilt pattern. Fabrics shown are 50% of actual size.

Indigo Berries

by Jo Morton



4877-B



4878-B



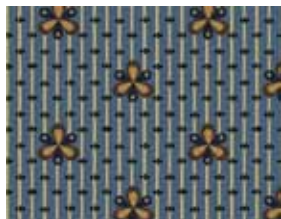
4879-B



4880-B



4881-B



4882-B



4883-B



4885-B



4887-B



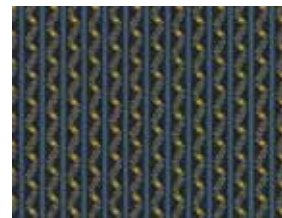
4888-B



4889-B



4891-B



4892-B



4895-B

All fabrics used in quilt pattern. Fabrics shown are 50% of actual size.

Ravenwood

by Jo Morton



4233-K



2474-K



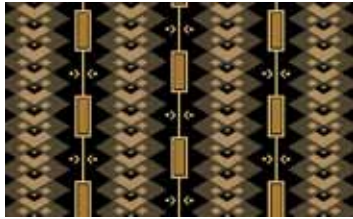
3993-K



3997-K



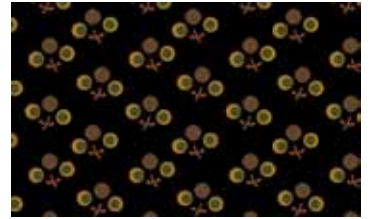
3998-K



4878-K



4879-K



4880-K



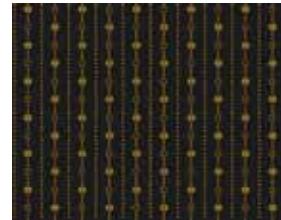
4884-K



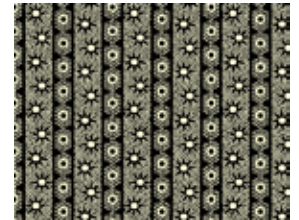
4885-K



4886-L



4888-K



4890-K

All fabrics used in quilt pattern. Fabrics shown are 50% of actual size.

Toast II

by Jo Morton



2650-L



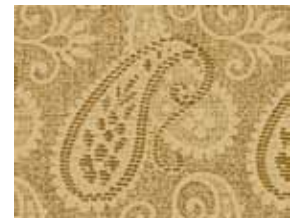
4244-LN*



4244-N



4233-L*



4233-LN*



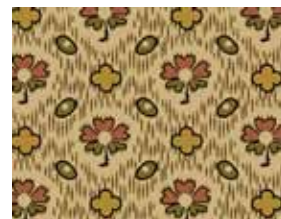
4229-LN*



4241-LN



4243-L0



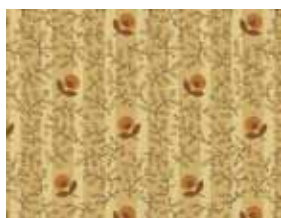
4245-LC



4246-LN



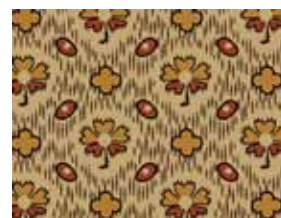
4229-Y



4241-YN*



4243-LR*



4245-L0*



4246-N*

*Fabrics used in quilt pattern. Fabrics shown are 50% of actual size.