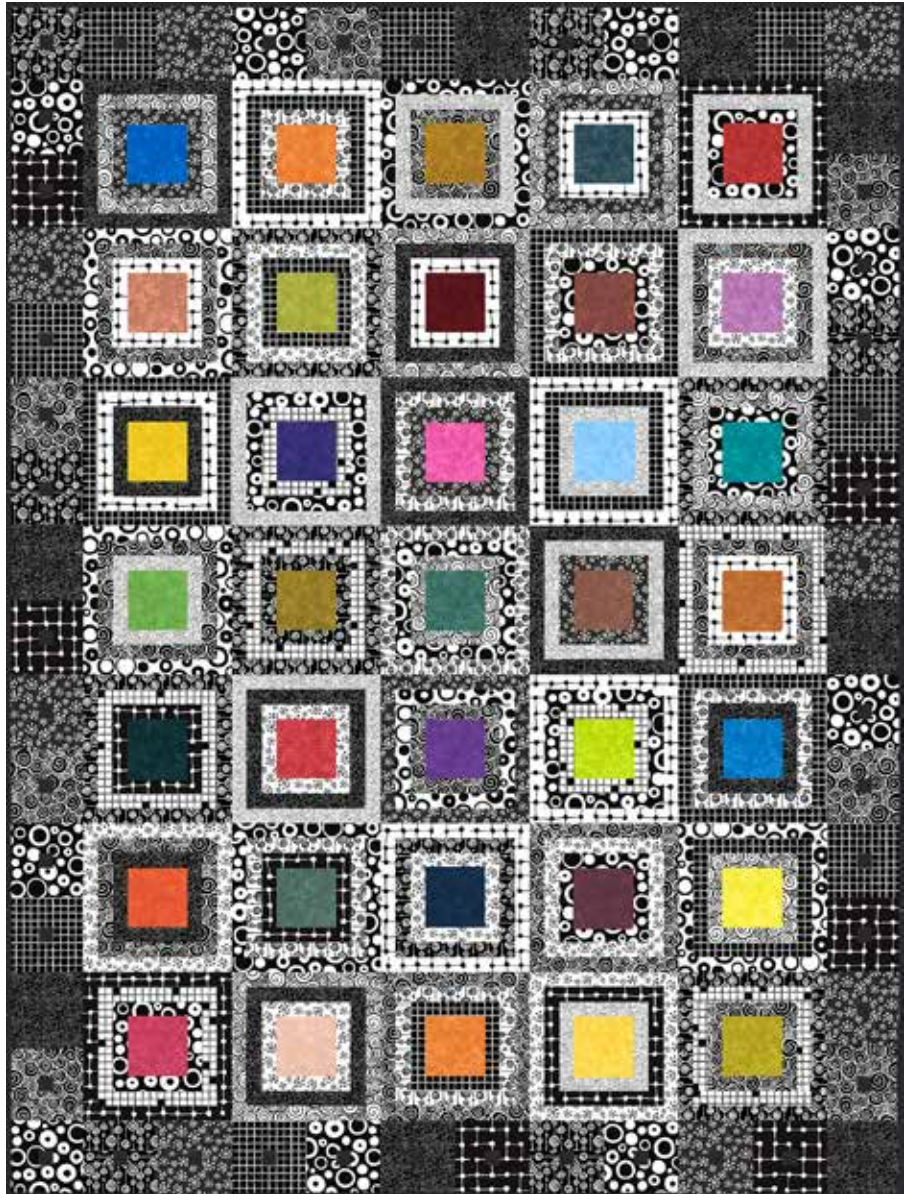
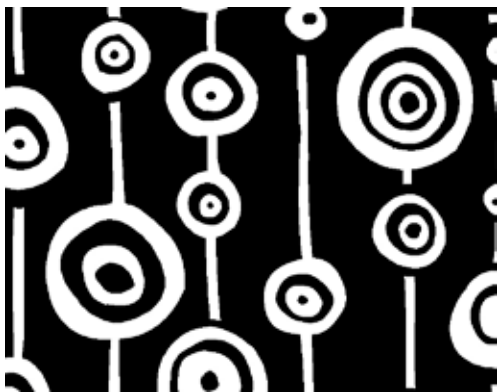


Night and Day

FABRICS BY KIM SCHAEFER



Quilt Design: **Kim Schaefer**
Quilt Size: **60" x 80"**
andoverfabrics.com



About Night and Day

I have always enjoyed quilts made from black and white fabrics. I also like fabrics combined with several other colors. The high contrast allows for stunning quilts with a boldness and beauty that is timeless. — *Kim Schaefer*

andover



makower uk
The Henley Studio

Free Pattern Download Available

1384 Broadway New York, NY 10018
Tel. (800) 223-5678 • andoverfabrics.com

Night and Day Quilt



Introducing Andover Fabrics new collection: **Night and Day** by Kim Schaefer

Quilt designed by Kim Schaefer

Quilt finishes 60" x 80"
18 Y Blocks: 10" x 10"
17 Z Blocks: 10" x 10"
52 Border Blocks: 5" x 5"

Whimsical black and white prints surround a collection of bright textures in these easy-to-piece blocks. Smaller, simpler blocks surround the quilt to make the quilt border. The bold graphics accented with a splash of color in this quilt will add zing to any décor

Cutting Directions

Note: Read assembly directions before cutting patches. All measurements are cut sizes and include 1/4" seam allowances. A fat 1/8 is a 9" x 20"-22" cut of fabric. WOF designates the width of fabric from selvedge to selvedge (approximately 42" wide).

For (1) Block Y:

Black Print 1: Cut (2) strips 1 1/2" x 10 1/2"
Cut (2) strips 1 1/2" x 8 1/2"
Black Print 2: Cut (2) strips 1 1/2" x 6 1/2"
Cut (2) strips 1 1/2" x 4 1/2"
White Print: Cut (2) strips 1 1/2" x 8 1/2"
Cut (2) strips 1 1/2" x 6 1/2"
Bright Cut (1) square 4 1/2" x 4 1/2"

For (1) Block Z:

White Print 1: Cut (2) strips 1 1/2" x 10 1/2"
Cut (2) strips 1 1/2" x 8 1/2"
White Print 2: Cut (2) strips 1 1/2" x 6 1/2"
Cut (2) strips 1 1/2" x 4 1/2"
Black Print: Cut (2) strips 1 1/2" x 8 1/2"
Cut (2) strips 1 1/2" x 6 1/2"
Bright Cut (1) square 4 1/2" x 4 1/2"

For (1) Border Block:

Fabric A: Cut (1) square 1 1/2" x 1 1/2"
Black Print: Cut (2) strips 2 1/2" x 5 1/2"
Cut (2) strips 1 1/2" x 2 1/2"

Fabric Requirements

Fabric A	blocks, binding	Yardage	Fabric	
7 Black Prints	blocks	3/4 yard	3135-K	
3104-K	4170-K	4941-K	5285-K1	5286-K
5795-K1	7054-K			
7 White Prints	blocks	3/8 yard ea.		
3104-AK	*4170-AK	4941-AK	5285-AK	5286-AK
5795-AK	7054-AK			
35 Brights	block centers	fat 1/8 yard each		
3135-B1	3135-B2	3135-B3	3135-DY	3135-E
3135-E1	3135-G2	3135-G3	3135-G4	3135-LE
3135-LG	3135-LO	3135-LP	3135-LT	3135-O
3135-O2	3135-O3	3135-O4	3135-ON	3135-P
3135-P3	3135-P4	3135-R1	3135-R2	3135-R4
3135-R5	3235-T	3135-T1	3135-T2	3135-T3
3135-W	3135-Y3	3135-Y4	3135-Y5	3135-Y6
*Backing		3 3/4 yards	4170-AK	

Cutting for Whole Quilt

Fabric A

Cut (8) strips 2 1/2" x WOF for binding
Cut (52) squares 1 1/2" x 1 1/2" for Border Block centers

7 Black Prints

Cut a total of (36) strips 1 1/2" x 10 1/2" for Block Y and Block Z
Cut a total of (70) strips 1 1/2" x 8 1/2" for Block Y and Block Z
Cut a total of (70) strips 1 1/2" x 6 1/2" for Block Y and Block Z
Cut a total of (36) strips 1 1/2" x 4 1/2" for Block Y and Block Z
Cut a total of (104) strips 2 1/2" x 5 1/2" for Border Blocks
Cut a total of (104) strips 1 1/2" x 2 1/2" for Border Blocks

7 White Prints

Cut a total of (34) strips 1 1/2" x 10 1/2" for Block Y and Z
Cut a total of (70) strips 1 1/2" x 8 1/2" for Block Y and Z
Cut a total of (70) strips 1 1/2" x 6 1/2" for Block Y and Z
Cut a total of (34) strips 1 1/2" x 4 1/2" for Block Y and Z

35 Brights

Cut a total of (35) squares 4 1/2" x 4 1/2" for Block Y and Z

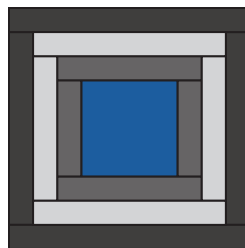
Backing

Cut (2) panels 42" x 64", pieced to fit quilt top with overlap on all sides

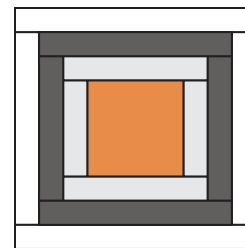
Night and Day Quilt

Making the Quilt

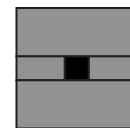
1. Feel free to make your blocks with any combination of black and white prints that you wish. Follow the cutting directions to plan the black and white print strips for each block. Referring to the Block Y diagram, sew $4\frac{1}{2}$ " and $6\frac{1}{2}$ " black strips to a center bright $4\frac{1}{2}$ " square. Sew $6\frac{1}{2}$ " and $8\frac{1}{2}$ " white strips to the block. Add $8\frac{1}{2}$ " and $10\frac{1}{2}$ " black strips (using a second black print) to the block. The block should measure $10\frac{1}{2}$ " square. Make a total of 18 Block Ys.



10" Block Y
Make 18



10" Block Z
Make 17



5" Border
Block
Make 52

2. Referring to the Block Z diagram, repeat the steps above, reversing the placement of black and white prints. Make 17 Block Zs.

3. Referring to the Border Block diagram, sew black print $1\frac{1}{2}$ " x $2\frac{1}{2}$ " strips to opposite sides of a Fabric A $1\frac{1}{2}$ " center square. Sew $2\frac{1}{2}$ " x $5\frac{1}{2}$ " strips of the same black print to the top and bottom. The block should measure $5\frac{1}{2}$ " square. Make 52 Border Blocks.

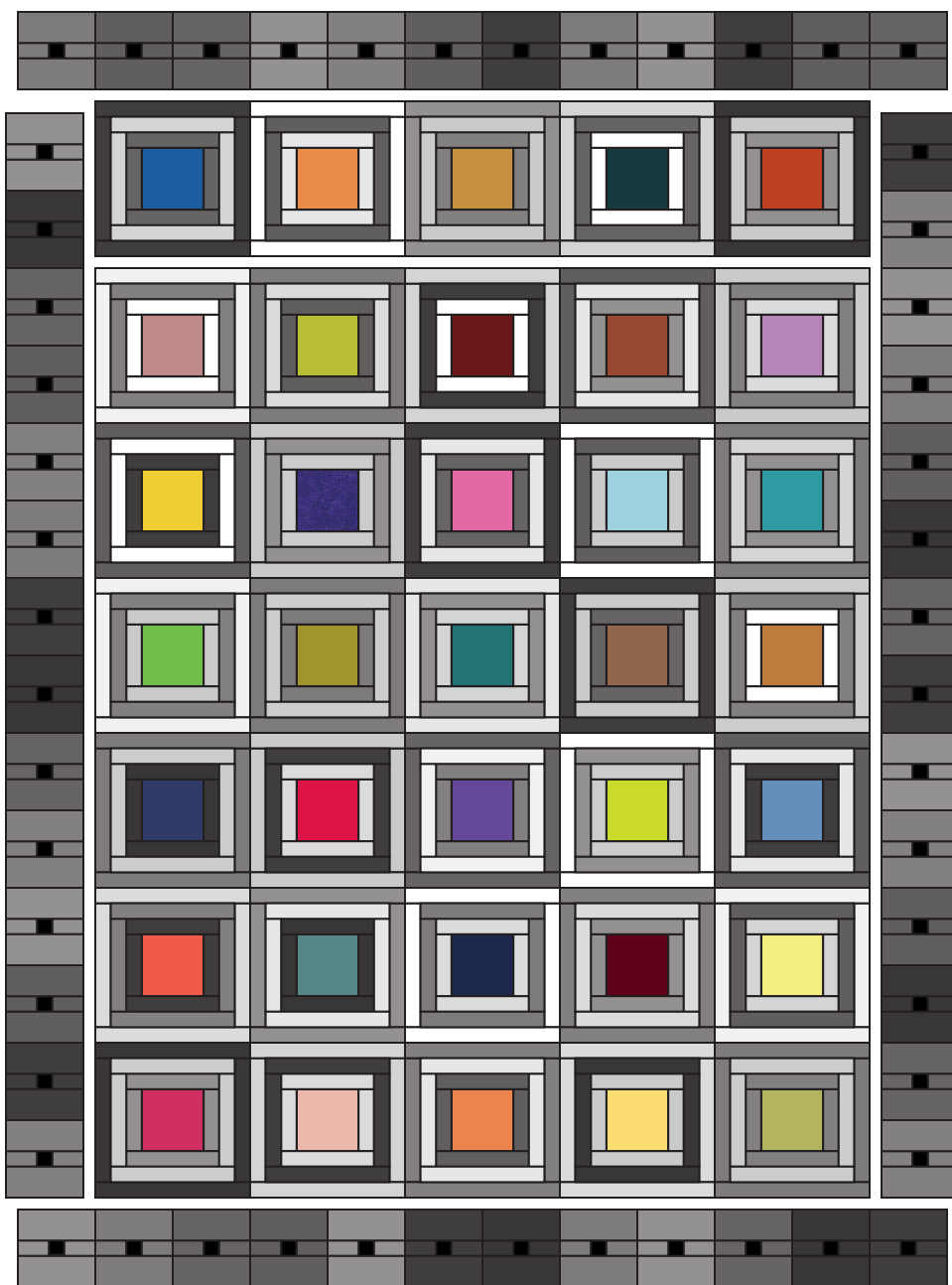
4. Referring to the Quilt Diagram, join 3 Block Y and 2 Block Z to make the top row. Make 4 rows like this. Join 3 Block Z and 2 Block Y to make the second row. Make 3 rows like this. Join the rows in alternating order.

5. Sew 14 Border Blocks side by side. Stitch to one side of the quilt. Repeat on the opposite side. Sew 12 Border Blocks side by side. Sew to the top; repeat for the bottom.

Finishing the Quilt

6. Layer the quilt with batting and backing and baste. Quilt in the ditch around block patches.

7. Bind to finish the quilt.



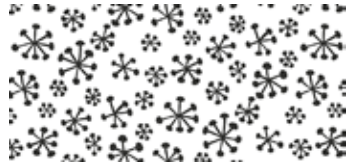
Quilt Diagram

Night and Day

FABRICS BY KIM SCHAEFER



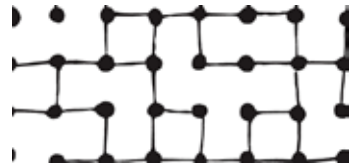
7054-AK



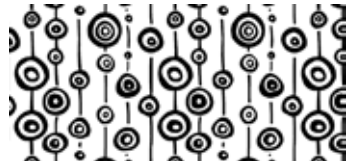
4170-AK



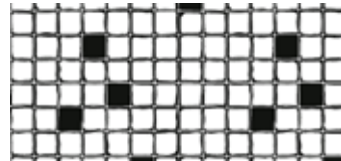
5285-AK



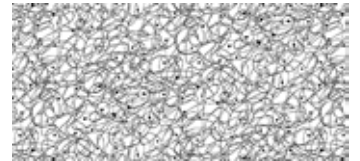
5795-AK



4941-AK



5286-AK



3104-AK



7054-K



4170-K



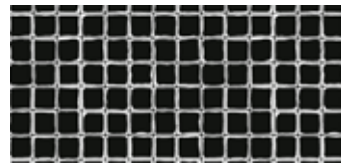
5285-K1



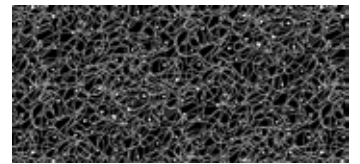
5795-K1



4941-K



5286-K



3104-K

Blend with fabrics from Tic Tac by Kim Schaefer



All fabrics are used in quilt pattern. Fabrics shown are 25% of actual size.

andover

makower uk
The Henley Studio

Free Pattern Download Available

1384 Broadway New York, NY 10018
Tel. (800) 223-5678 • andoverfabrics.com