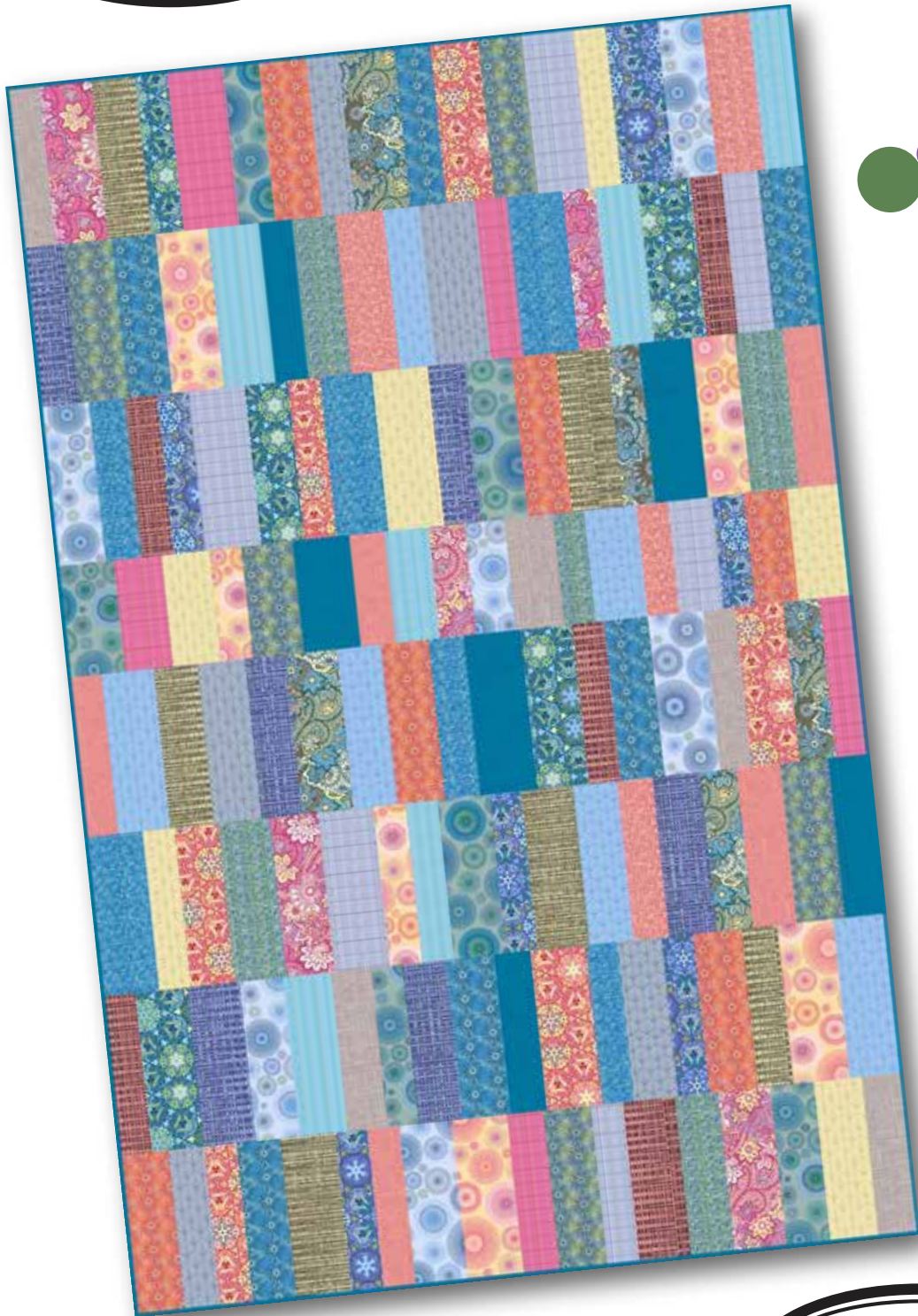




PRESENTS

Passport



Fabrics by
 MODERN
QUILTSTUDIO

Well Traveled Quilt

Designed by
Modern Quilt Studio

Quilt size: 50" x 77"



makower uk[®]

www.andoverfabrics.com

Well-Traveled Quilt

Introducing Andover Fabrics new collection: Passport by Modern Quilt Studio
Quilt designed by Modern Quilt Studio

Quilt finishes 50" x 77"

Imagine a trip to an exotic locale filled with rich paisleys and subtle textures. The luscious colors blend together so well that rectangles are all you need to make this lovely throw. The piecing is as easy as can be since no seams match. Stitch this up in no time at all, and then dream about all the wonderful places you'll go.

Fabric Requirements

Fat ¼ Prints

fat ¼ each	7084-E	7084-GB	7085-BP	7085-E
	7085-G	7086-B	7086-E	7086-G
	7087-B	7087-E	7087-G	7088-B
	7088-E	*7088-G	7089-B	7089-E
	7089-GY	7090-B	7090-EY	7090-G
	7091-B	7091-E	7091-GT	
	7092-EO	7092-GN		

Binding	¾ yard	7092-B
Backing	¾ yards	*7088-G

Cutting Directions

Note: Read assembly directions before cutting patches. All measurements are cut sizes and include ¼" seam allowances. A fat ¼ is an 18" x 20"-22" cut. WOF designates the width of fabric from selvedge to selvedge (approximately 42" wide).

Fat ¼ Prints Well-Traveled is an improvisationally cut and pieced quilt. From the assorted fat quarters, cut approximately 130 pieces, each between 1½-4" wide and all 10½" high. Next, cut approximately 20 pieces, each between 1½-4" wide and all 7½" high.

Binding Cut (7) strips 2½" x WOF for binding

Backing Cut (2) panels 42" x 58", pieced to fit quilt top with overlap on all sides

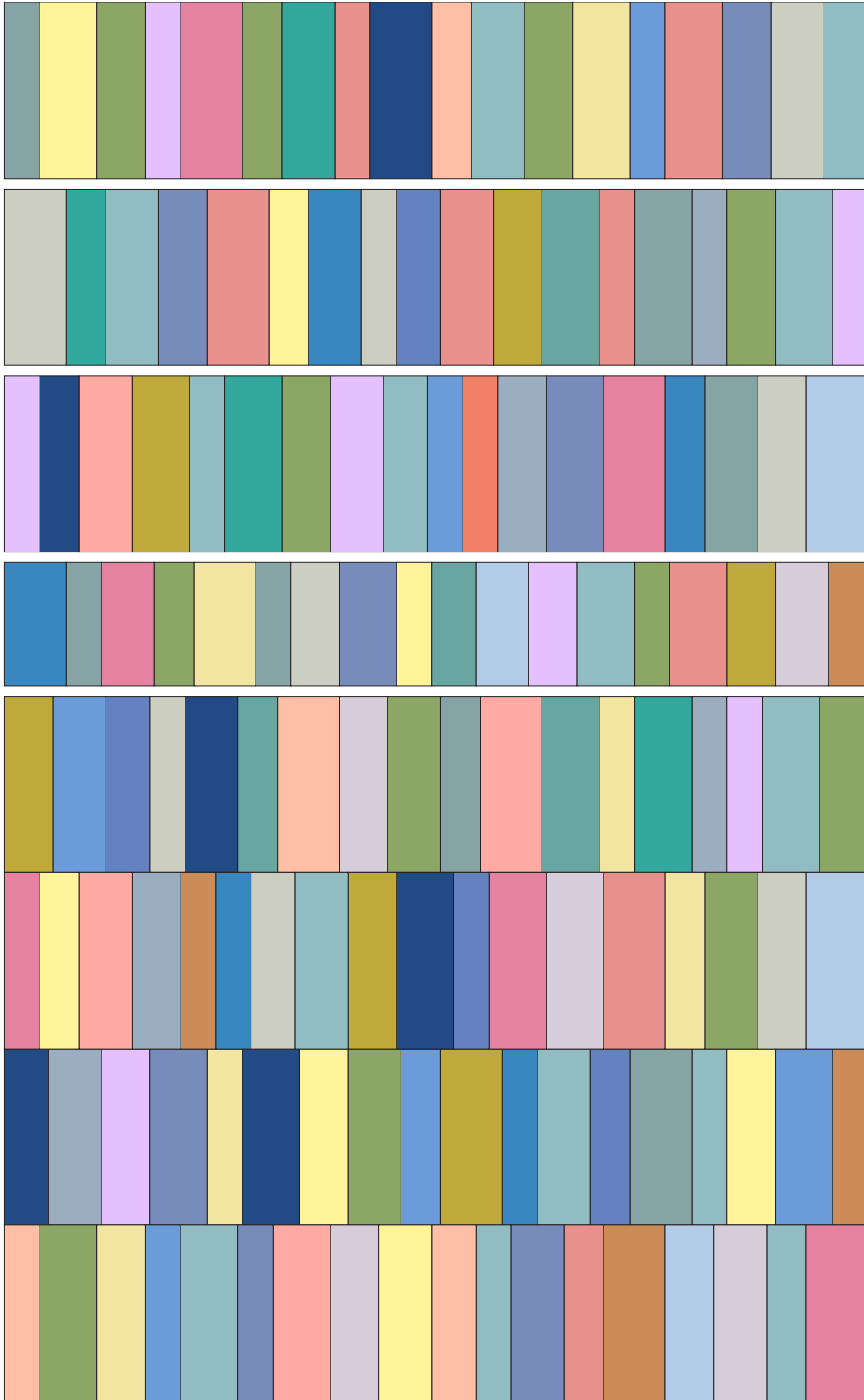
Making and Assembling the Quilt

1. Sew assorted width 10½" high pieces into pairs. Press the seams open.
2. Sew two pairs into sets of four. Press the seams open.
3. Sew assorted width 7½" high pieces into pairs. Press the seams open.
4. Sew two pairs into sets of four. Press the seams open.
5. Following Quilt Diagram, layout units in bands approximately 50" wide, rearranging as necessary to avoid awkward fabric adjacencies.
6. Sew bands together, adding or trimming pieces as needed to make each band 50" wide.
7. Join the rows. Press the seams open.

Finishing the Quilt

Layer the quilt with the batting and backing and baste. We quilted the quilt in a spiral pattern.

Well-Traveled Quilt



Quilt Diagram

Passport

by Modern Quilt Studio



makower uk®

1384 Broadway
New York, NY 10018
(800) 223-5678
www.andoverfabrics.com



7084-E



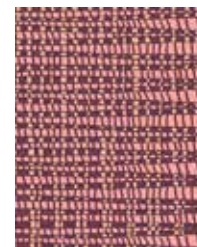
7085-E



7087-E



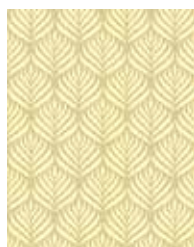
7088-E



7089-E



7086-E



7090-EY



7091-E



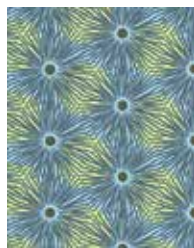
7092-EO



7084-GB



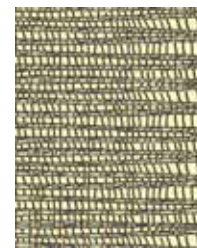
7085-G



7087-G



7088-G



7089-GY



7086-G



7090-G



7091-GT



7092-GN



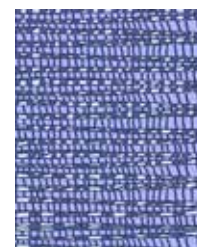
7085-BP



7087-B



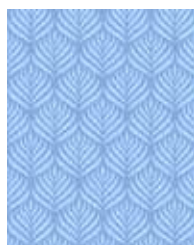
7088-B



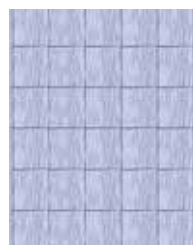
7089-B



7086-B



7090-B



7091-B



7092-B

All fabric are used
in quilt pattern.
Fabrics shown are
25% of actual size.

*Free Pattern Download
Available at
www.andoverfabrics.com*