

Pearl Bracelets

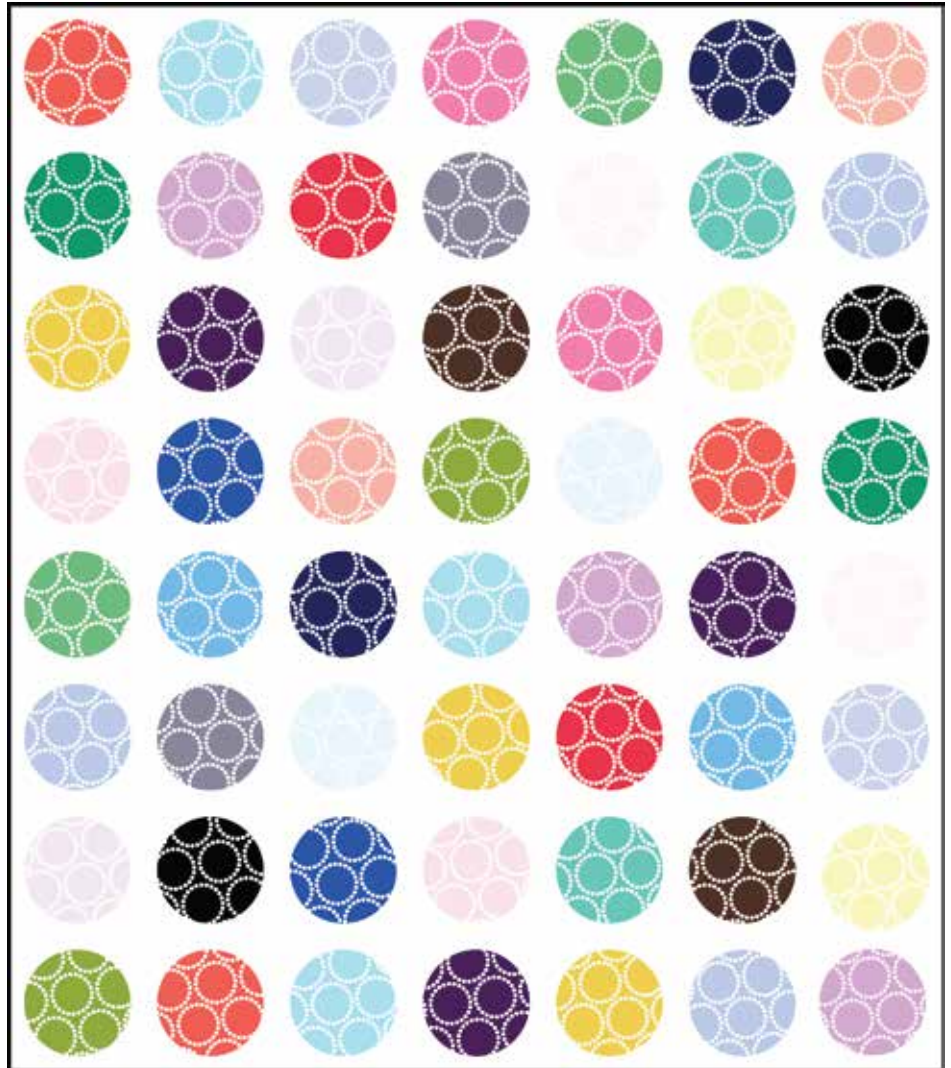
FABRICS BY LIZZY HOUSE



Pearls Quilt Design by:
Lizzy House

Made by: **Louise Horkey**
Quilted by: **Barbara Persing**
Quilt Size: **70" x 80"**

andoverfabrics.com



About Pearl Bracelets

Lizzy House's **Pearl Bracelets** has become an iconic print among modern quilters. Its charm and simplicity is only matched by its beginnings. Pearl Bracelets was originally a part of *Red Letter Day*, Lizzy's second collection, released in 2009.

The Pearl Bracelets pattern represents a gift that derives its meaning and significance from its giver: someone who meant so much to you that anything they gave you was as good as a piece of their heart.



andover

makower uk
The Henley Studio

Free Pattern Download Available

1384 Broadway New York, NY 10018
Tel. (800) 223-5678 • andoverfabrics.com

Pearls Quilt



Introducing Andover Fabrics new collection: **Pearl Bracelets** by Lizzy House

Quilt designed by Lizzy House, made by Louise Horkey and machine quilted by Barbara Persing

Quilt finishes 70" x 80"

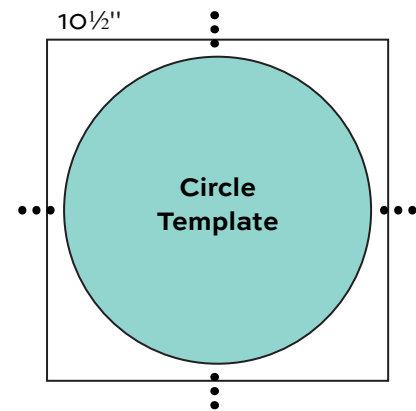
56 Blocks: 10" x 10"

Fabric Requirements

	Yardage	Fabric		
Block background	3½ yards	A-S-L		
19 Prints appliqué	Fat ⅛ yard ea.			
4116-B1	4116-B3	4116-B4	4116-C	4116-C1
4116-C2	4116-E	4116-E1	4116-G1	4116-G2
4116-K	4116-L	4116-LO	4116-N	4116-R
4116-T1	4116-T2	4116-V	4116-Y1	
6 Prints appliqué	Fat ¼ yard ea.			
4116-B2	4116-O2	4116-P		
4116-P1	4116-T	4116-Y		
Binding	⅝ yard	S0260-ANB-Black		
Backing	5 yards	4116-WW		

Appliquing the Blocks

1. Finger-press 10½" white square in half on both width and length. Using creases as placement guides, center and appliqué circle on square using appliqué method of choice.



Appliqué 56 total

Cutting Directions

Note: Read assembly directions before cutting patches. Measurement for squares is cut size and includes ¼" seam allowance. Measurement for circles is finished size. A fat ⅛ is a 9" x 20"-22" cut of fabric. A fat ¼ is an 18" x 20"-22" cut. WOF designates the width of fabric from selvedge to selvedge (approximately 42" wide).

Note: Cut a total of 56 circles 8" diameter

Block background Cut (56) squares 10½" x 10½"

Fat ⅛ prints From each:
Cut (2) 8" circles

Fat 4 prints From each:
Cut (3) 8" circles

Binding Cut (8) 2½" x wof strips
Sew together end-to-end

Backing Cut and piece widthwise to fit quilt top with 4" overlap on all sides

Assembling the Quilt Top

Note: Refer closely to Quilt Diagram and photo for following steps. You may wish to play with the arrangement of the blocks on a design wall or other large flat surface prior to assembly until you have the arrangement you prefer.

2. Stitch 8 rows of 7 blocks each, watching orientation of blocks.
3. Sew rows together. Edge-stitch fusible appliqué if desired.

Finishing the Quilt

4. Layer the quilt with batting and backing and baste. Quilt in the ditch around blocks and circles. Bind to finish the quilt.

Pearls Quilt

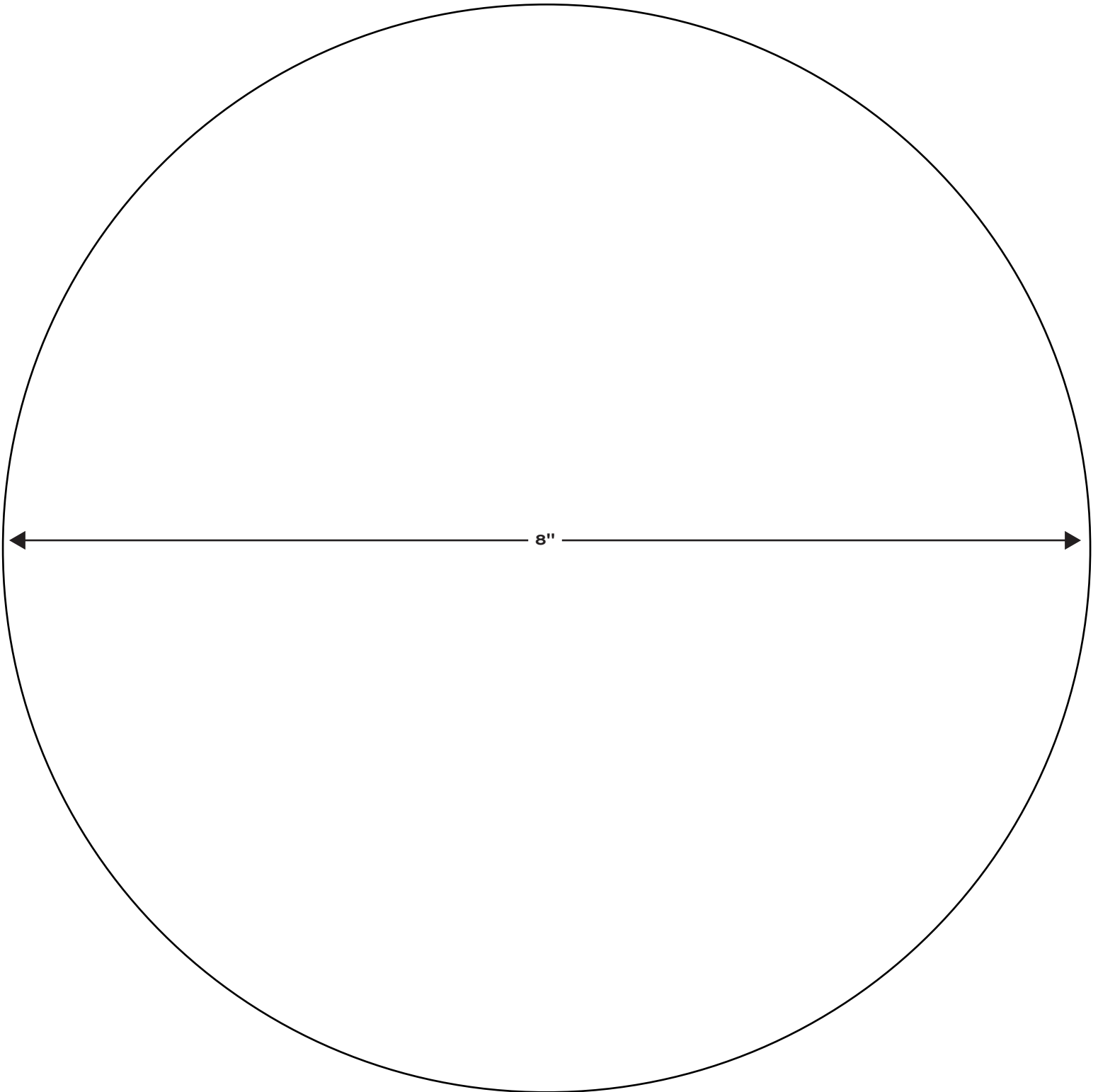


Quilt Diagram

Pearls Quilt

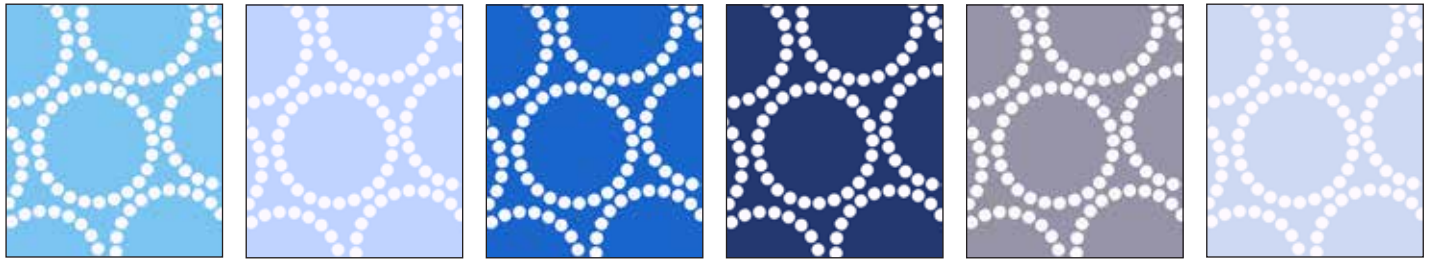
Circle Template

Note: Some printers have a default printing setting at 95% of actual size. Make sure your printer is set at 100%. Measure template piece after printing to check the size.



Pearl Bracelets

FABRICS BY LIZZY HOUSE



4116-B1

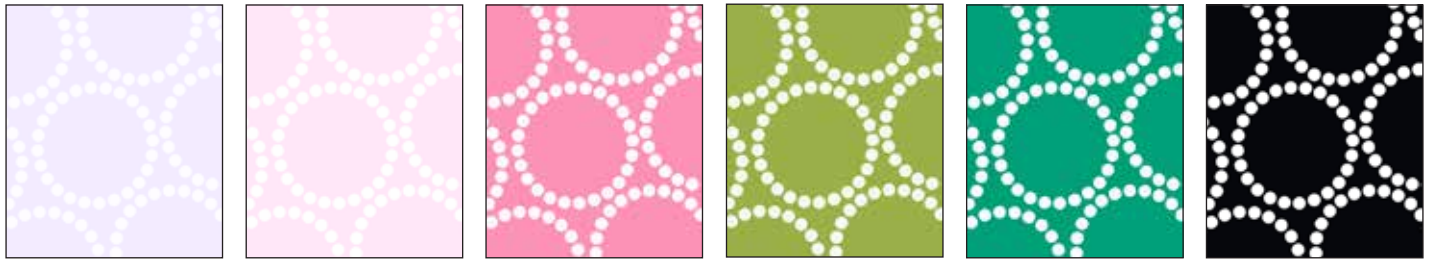
4116-B2

4116-B3

4116-B4

4116-C

4116-C1



4116-C2

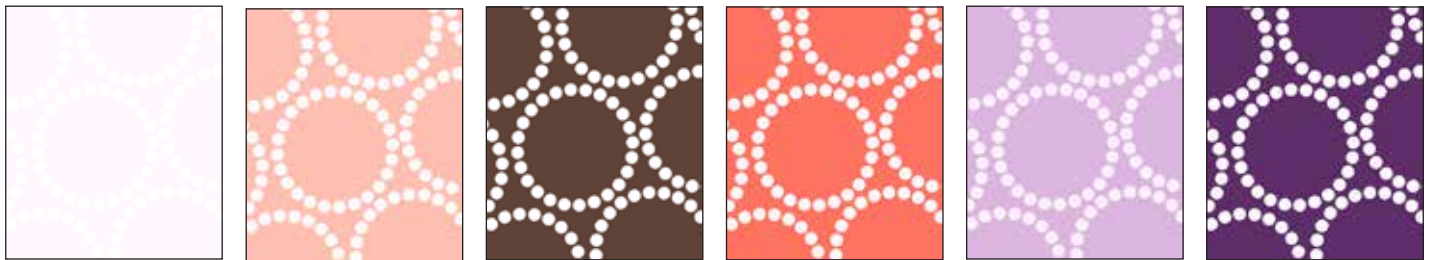
4116-E

4116-E1

4116-G1

4116-G2

4116-K



4116-L

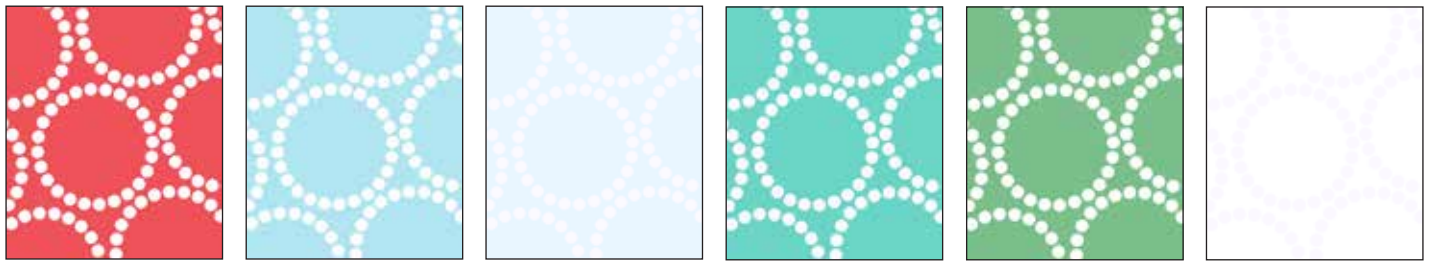
4116-LO

4116-N

4116-O2

4116-P

4116-P1



4116-R

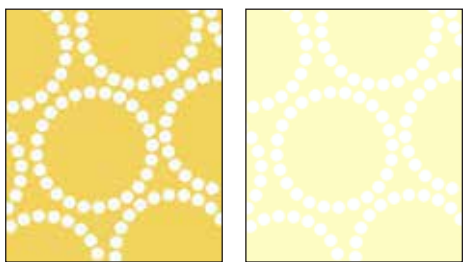
4116-T

4116-T1

4116-T2

4116-V

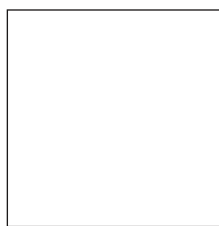
4116-WW



4116-Y

4116-Y1

Blend with Andover Solids



A-S-L



S02060
ANB-Black

All fabrics are used in quilt pattern.
Fabrics shown are 20% of actual size.

andover



makower uk
The Henley Studio

Free Pattern Download Available

1384 Broadway New York, NY 10018
Tel. (800) 223-5678 • andoverfabrics.com