

Riviera Rosé

BY RENÉE NANNEMAN



Quilt designed by:
Renée Nanneman

Quilt Size: 76" x 76"

andoverfabrics.com

About Riviera Rosé

Riviera Rosé is filled with romantic reds to evoke feelings of love, warmth & comfort. The prints speak of gardens alive with bees, twining brambles, hand-woven baskets, age-old mosaic floors, stonework and cobblestone streets. When we close our eyes beneath a luxurious quilt, we can imagine traveling to ancient quaint villages along the Mediterranean coast of France and Italy. — Renée Nanneman

andover

•
• makower.uk
•

Free Pattern Download Available

1384 Broadway New York, NY 10018
Tel. (800) 223-5678 • andoverfabrics.com

Riviera Rosé Quilt



Introducing Andover Fabrics new collection: RIVIERA ROSÉ by Renée Nanneman

Quilt designed by Renée Nanneman

Quilt finishes 76" x 76"
25 Blocks: 10" x 10"

Scrumptious florals, printed bees, and unusual geometric prints combine to make these house blocks one-of-a-kind. Each of the 25 prints is used in every part of a house, so what fun you will have mixing it all up.

Cutting Directions

Note: Read assembly directions before cutting patches. All measurements are cut sizes and include 1/4" seam allowances. A fat 1/4 is an 18" x 20"-22" cut. Borders are cut the exact lengths required plus 1/4" seam allowances. WOF designates the width of fabric from selvedge to selvedge (approximately 42" wide).

Patches for one house

From each of the 24 Fat 1/4's and Fabric D, cut the following patches:

- | | |
|-----------------------------------|------------------------------|
| (1) house patch 1 1/2" x 10 1/2" | (4) shutters 1 1/2" x 4 1/4" |
| (1) house patch 1 1/4" x 2 1/2" | (2) windows 2" x 4 1/4" |
| (2) house patches 1" x 4 1/4" | (1) door 2 1/2" x 4 3/4" |
| (2) house patches 1 3/4" x 4 1/2" | (2) sky patches 2" x 3" |
| (1) roof 3" x 10 1/2" | (1) sky patch 2" x 3 1/2" |
| (2) chimneys 1 1/2" x 2" | (2) sky patches 3" x 3" |

Fabric A

Cut (2) borders 7 1/2" x 76 1/2", cut lengthwise
Cut (2) borders 7 1/2" x 62 1/2", cut lengthwise

Fabric B

Cut (60) sashes 2 1/2" x 10 1/2"

Fabric C

Cut (36) corner stones 2 1/2" x 2 1/2"

Fabric D

Cut (8) strips 2 1/2" x WOF for binding
Cut all patches for 1 house

Fat 1/4's

From each: Cut all patches for 1 house

Backing

Cut (2) panels 42" x 84", pieced to fit quilt top
with overlap on all sides

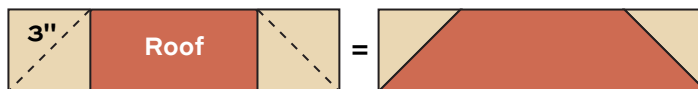
Fabric Requirements

		Yardage	Fabric		
Fabric A	border	2 1/4 yards	9083-K		
Fabric B	sashes	1 1/4 yards	9084-K		
Fabric C	corners	fat 1/4 yard	9089-R		
*Fabric D	blocks	1 yard	9094-K		
Fat 1/4's	blocks	fat 1/4 yard each			
	9083-R	9084-N	9084-R	9085-L	9085-R
	9085-RN	9086-L	**9086-R	9087-K	9087-R
	9088-L	9088-N	9089-N	9090-L	9090-R
	9091-LR	9091-NR	9092-N	9092-R	9093-L
	9093-R	9094-R	9095-N	9095-R	
Backing		5 yards	**9086-R		

*includes binding

Making the Quilt

1. Arrange patches to make 25 houses. Refer to the quilt photo for color guidance. Each house is made with 6 fabrics. Use one print for both chimneys, a different print for the 4 shutters, one print for windows and door, and another for the roof. Cut "house patches" from one print, and cut the "sky patches" from a sixth print. Once you are satisfied with the combinations, keep patches together for each block.
2. To join the sky triangles to the roof patch, follow these simple directions. Draw a diagonal line on the wrong side of each 3" sky square. Place a marked square on a roof rectangle, right sides together, aligning raw edges at one corner. Stitch on the drawn line; trim away and discard excess fabric (Diagram). Press open. Repeat on the adjacent corner, watching the orientation of the sewing line.



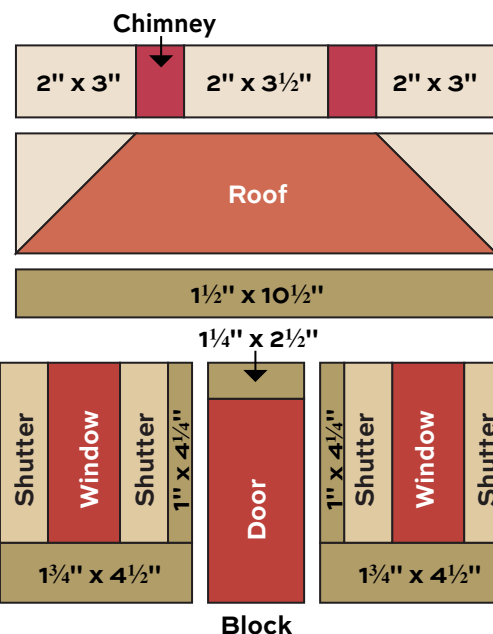
Diagram

Riviera Rosé Quilt

3. Refer to the Block Diagram. Join patches in horizontal rows, and then join the rows.
4. Referring to the Quilt Diagram, join 5 house blocks alternately with 6 sashes to make a block row. Make 5 rows like this. Join 5 sashes alternately with 6 corner stones to make a sash row. Make 6 sash rows. Join the rows as shown.
5. Sew shorter Fabric A borders to opposite sides of the quilt. Join longer borders to the top and bottom.

Finishing the Quilt

6. Layer the quilt with batting and backing and baste. Quilt in the ditch around border, sashes, and block patches. Quilt around the printed motifs in the outer border. Bind to finish the quilt.



Quilt Diagram

Riviera Rosé

BY RENÉE NANNEMAN



9083-K



9084-K



9084-N



9084-R



9083-R



9085-L



9085-R



9085-RN



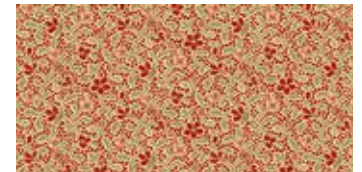
9086-L



9086-R



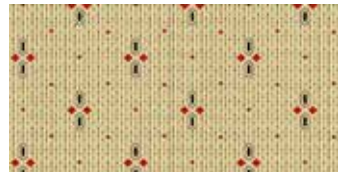
9087-K



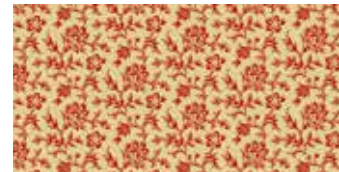
9087-R



9088-L



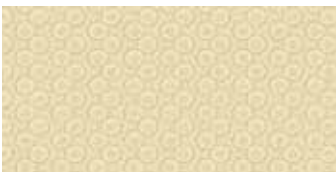
9088-N



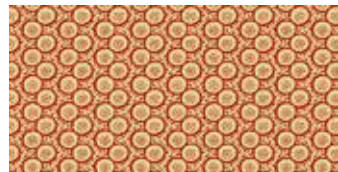
9089-N



9089-R



9090-L



9090-R



9091-LR



9091-NR



9092-N



9092-R



9093-L



9093-R



9094-K



9094-R



9095-N



9095-R

All fabrics are used in quilt pattern. Fabrics shown are 25% of actual size.

andover

•
•
•
•
makower.uk

Free Pattern Download Available

1384 Broadway New York, NY 10018
Tel. (800) 223-5678 • andoverfabrics.com