

Rosebud Faire



Quilt designed by Jean Ann Wright

Finished size: 88" x 109"



1384 Broadway
New York, NY 10018
(800) 223-5678

www.andoverfabrics.com

Fabrics by
Renée Nanneman

makower uk®

Rosebud Faire Quilt

Introducing Andover Fabrics new collection: Rosebud Faire by Renée Nanneman
Quilt designed by Jean Ann Wright

Fabric Requirements

		Yardage	Fabric
Fabric A	block 1	1¼ yards	5483-R
Fabric B	outer border	1¾ yards	5484-R
Fabric C	inner border	1¼ yards	5485-L
Fabric D	block 1	1½ yards	5486-L
Fabric E	block 3, sashes	2 yards	5487-L
*Fabric F	block 2	¼ yard	5488-N
Fabric G	sashes, leaves	1½ yards	5489-V
Fabric H	flowers, block 2	1½ yards	5490-E
Fabric I	blocks 1 & 2	⅝ yard	4064-N2
Fabric J	flowers	⅛ yard	4264-E
Fabric K	flowers, binding	1¼ yards	4265-R
*Backing Fabric		8 yards	5488-N

Quilt finishes: 88" x 109"
12 Block 1: 16" x 16"
20 Block 2: 5" x 5"
4 Block 3: 10" x 10"

Romantic, feminine prints in soft hues make this the perfect quilt for a girl of any age. Only 12 large blocks are needed to make this bed-size quilt. Simple appliquéd flowers can be stitched with traditional methods or fused and finished as desired.

Cutting Directions

Note: Borders are cut the exact lengths required plus ¼" seam allowances. WOF designates the width of fabric from selvedge to selvedge (approximately 42" wide).

Fabric A Cut (24) rectangles 4½" x 8½"
Cut (24) squares 4½" x 4½"

Fabric B Cut (2) borders 6½" x 89½", cut crosswise and pieced
Cut (2) borders 6½" x 68½", cut crosswise and pieced

Fabric C Cut (2) borders 4½" x 89½", cut crosswise and pieced
Cut (2) borders 4½" x 68½", cut crosswise and pieced

Fabric D Cut (24) squares 8½" x 8½"

Fabric E Cut (31) rectangles 3½" x 16½"
Cut (4) squares 10½" x 10½"

***Fabric F** Cut (20) squares 3½" x 3½"

Fabric G Cut (62) rectangles 1½" x 16½"
Cut 16 leaves

Fabric H Cut (80) rectangles 1½" x 3½"
Cut 28 large flowers

Fabric I Cut (24) squares 4½" x 4½"
Cut (80) squares 1½" x 1½"

Fabric J Cut (28) flower centers

Fabric K Cut (10) strips 2½" x WOF for binding
Cut (28) small flowers

***Backing** Cut (3) panels 39" x 96", pieced to fit quilt top with 4" overlap on all sides.

Fusible appliqué

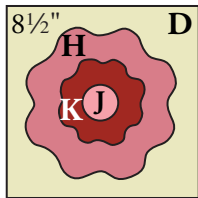
Note: To make it easier to align the leaves, fold the 10½" E squares diagonally in half both ways and lightly finger press the folds. The templates are printed without turn-under allowance for use with fusible web. Trace each motif onto the paper side of fusible web. Cut each shape outside the traced line, leaving a margin of the webbing all around the shape. Following manufacturer's instructions, press traced patterns to wrong side of fabrics. Cut out parts on the drawn lines.

Use the full-size pattern to help position the patches in the center of each background D or E square. Align the leaves along the diagonal fold lines of the E's. Fuse each patch to the square, following manufacturer's instructions, beginning with the underneath patch. Finish the edges with a decorative machine stitch using contrasting thread, or use an invisible thread with a blind appliqué machine stitch.

Rosebud Faire Quilt

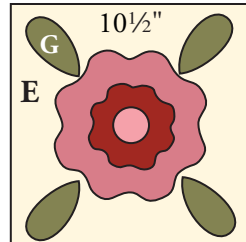
Making the Blocks and Sashes

1. Prepare patches for the 28 flowers and 16 leaves using your favorite method of appliqué. Fuse and/or stitch the flowers to Fabric D $8\frac{1}{2}$ " squares and Fabric E $10\frac{1}{2}$ " squares. Add 4 leaves to each flower in the $10\frac{1}{2}$ " squares to make 4 Block 3's.



Make 24

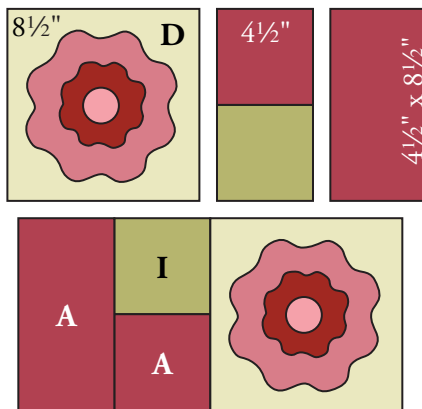
Block 1 Unit



Make 4

Block 3 Diagram

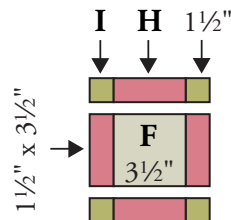
2. Referring to the Block 1 Diagram, join Fabric A squares and rectangles and Fabric I $4\frac{1}{2}$ " squares to make pieced units, orienting the fabrics as shown. Join 2 pieced units and 2 Fabric D appliqué squares to make a Block 1. Make 12.



Make 12

Block 1 Diagram

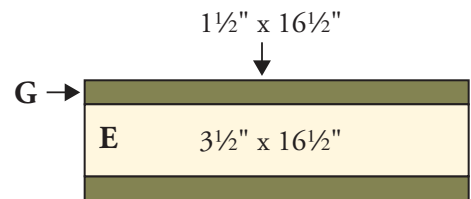
3. Referring to the Block 2 Diagram, sew a Fabric H rectangle to opposite sides of a Fabric F $3\frac{1}{2}$ " square. Sew Fabric I $1\frac{1}{2}$ " squares to ends of 2 Fabric H rectangles. Sew the pieced rectangles to the top and bottom of the F unit to make a Block 2. Make 20.



Make 20

Block 2 Diagram

4. Referring to the Sash Diagram, sew Fabric G rectangles to long sides of a Fabric E rectangle to make a sash. Make 31.



Make 31

Sash Diagram

Quilt Assembly

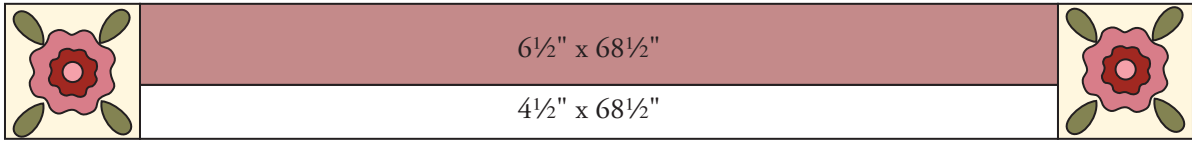
5. Refer to the Quilt Diagram throughout the assembly. To make a block row, join 3 Block 1's and 4 sashes, orienting the blocks as shown. Press the seam allowances toward the sashes. Make 4 block rows.
6. To make a sash row, join 3 sashes and 4 Block 2's. Press the seam allowances toward the sashes. Make 5 sash rows.
7. Sew the block rows between the sash rows. Press the seam allowances in the direction they want to fall.
8. Join long Fabric B and Fabric C borders to make side border units. Sew to sides of the quilt. Join short Fabric B and Fabric C borders to make top/bottom border units. Trim the t/b border units if necessary to fit the width of the quilt from raw edge to raw edge (including side borders). Sew Block 3's to ends of border units. Sew to the top and bottom of the quilt.

Finishing the Quilt

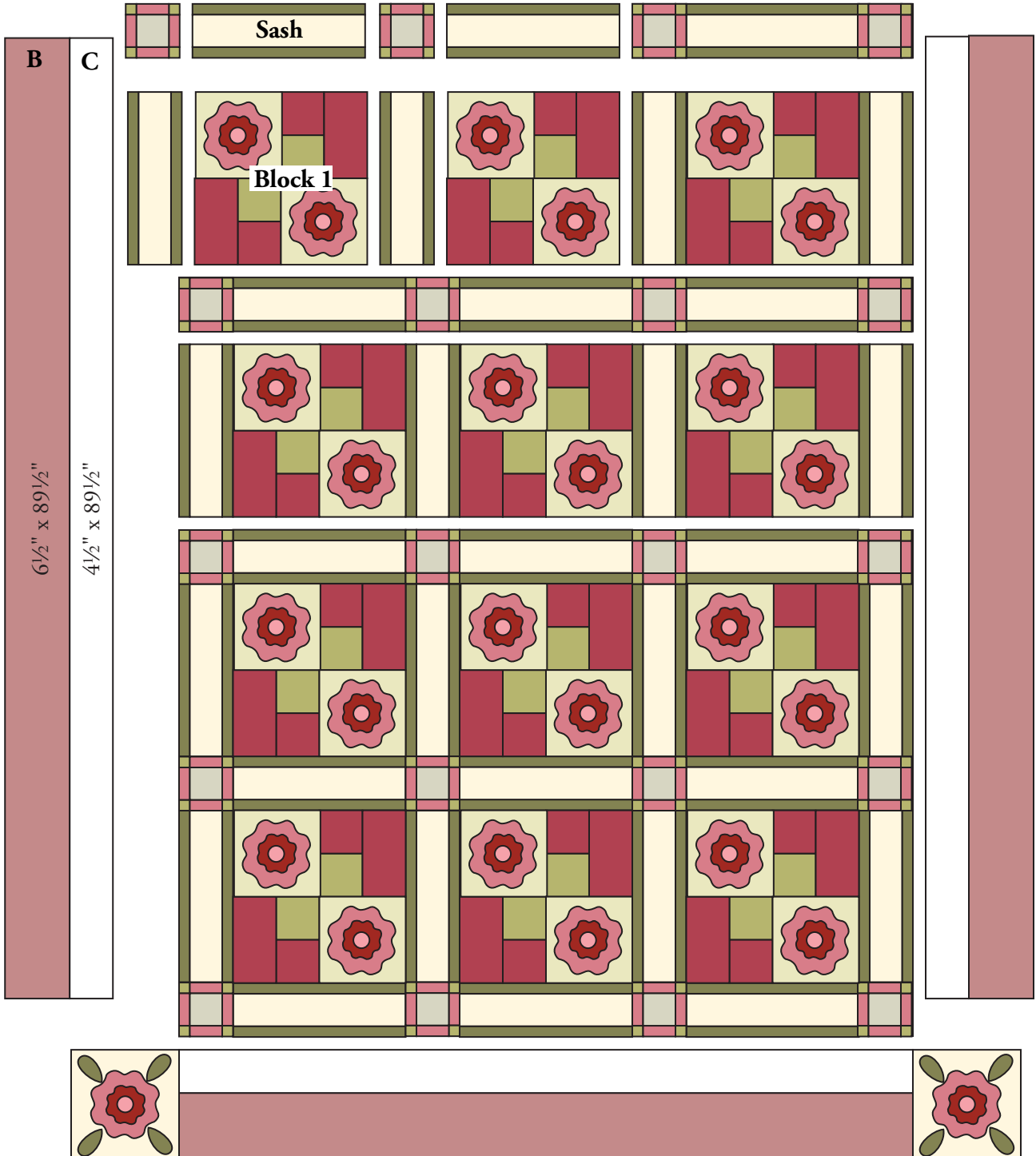
9. Layer quilt with batting and backing and baste. Quilt in the ditch around borders, sashes, and block patches. Quilt around the appliqué. Quilt a motif of your choice in the wide borders and sashes and in the Fabric A patches. Bind to finish the quilt.

Rosebud Faire Quilt

Block 3

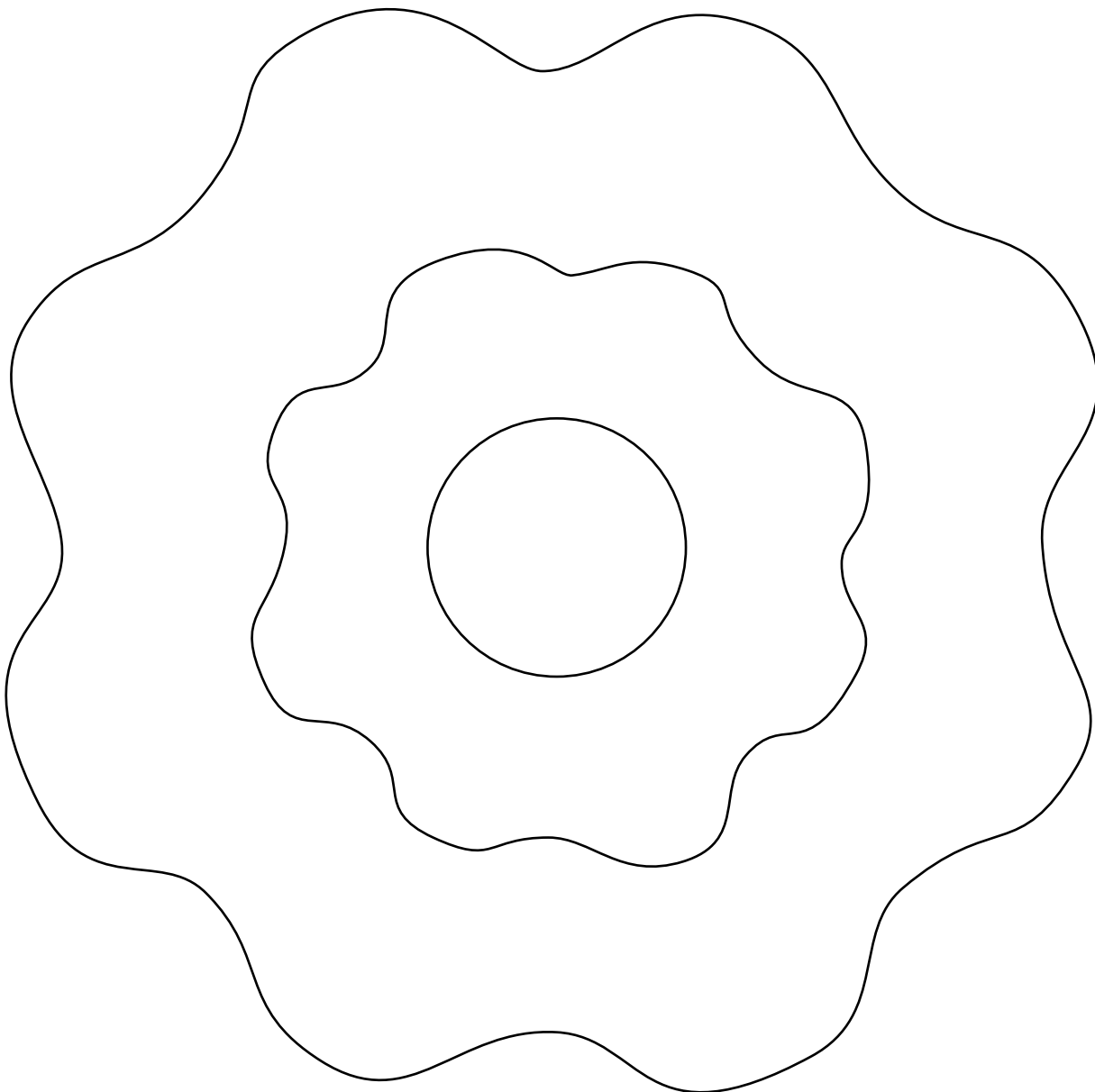
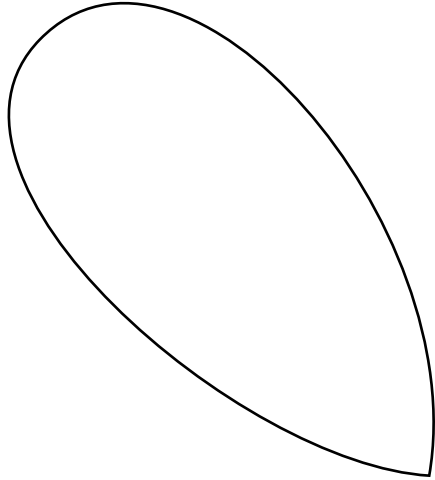


Block 2



Quilt Diagram

Full Size Appliqué Patterns for Rosebud Faire



Rosebud Faire

by Renee Nanneman



5483-L



5483-N



5483-R*



5484-E



5484-R*



5485-L*



5485-N



5486-L*



5486-R



5487-L*



5487-N



5488-E



5488-N*



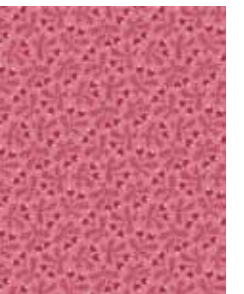
5489-L



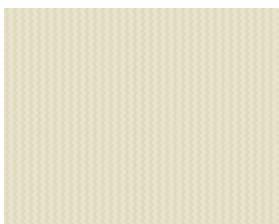
5489-V*



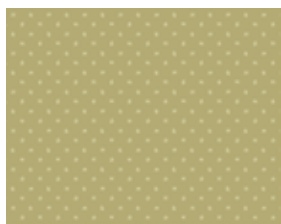
5490-L



5490-E*



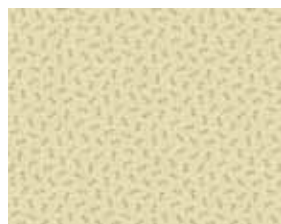
3940-L



4064-N2*



4065-V



4263-L



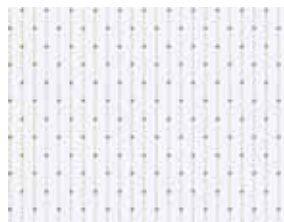
4264-E*



4265-R*



4923-L



4928-N



4933-C

*Indicates fabric used in quilt pattern. Fabrics shown are 25% of actual size.