

Round the Garden



Mary Engelbreit™

©Mary Engelbreit Enterprises, Inc. All Rights Reserved
under License to Andover Fabrics Inc.



makower uk®

1384 Broadway • New York, NY 10018
(800) 223-5678 • www.andoverfabrics.com

Quilt designed by Jean Ann Wright

Quilt size: 75" x 90"

5/30/12



©Mary Engelbreit Enterprises, Inc. All Rights Reserved
under License to Andover Fabrics Inc.

Round the Garden Quilt

Round the Garden quilt designed by Jean Ann Wright

Quilt finishes 75" x 90"
16 Block W: 9" x 9"
6 Block X: 6" x 6"
10 Block Y: 6" x 6"
4 Block Z: 6" x 6"

Classic patchwork and bright, contemporary prints combine in a satisfying mix in this bed-size quilt. A striking framework separates the blocks. Some piecing experience is helpful. Directions are given to make some units extra large to be trimmed for a perfect fit. Choose the lighter palette with soft teals and a splash of sun colors, or choose the darker version with more drama and intensity.

Fabric Requirements

		Yardage	Yellow	Black
Fabric A	blocks, sashes	1 ³ / ₄ yards	5783-R	5783-K
Fabric B	outer border	2 ¹ / ₂ yards	5784-R	5784-K
Fabric C	block W	³ / ₄ yard	5786-R	5786-K
Fabric D	blocks Y & Z	¹ / ₄ yard	5787-RG	5787-KG
Fabric E	inner border	⁵ / ₈ yard	5787-RR	5787-K
Fabric F	all blocks	³ / ₈ yard	5789-R	5789-K
*Fabric G	all blocks, sashes	2 ¹ / ₄ yards	5790-RY	5790-KR
Fabric H	border, block W	2 ¹ / ₈ yards	5790-WW	5790-K
Backing		5 ¹ / ₂ yards	5785-R	5785-K

*includes binding

Cutting Directions

Note: All measurements are cut sizes and include ¹/₄" seam allowances. Borders are cut the exact lengths required plus ¹/₄" seam allowances. WOF designates the width of fabric from selvedge to selvedge (approximately 42" wide).

- Fabric A** Cut (31) rectangles 4¹/₂" x 9¹/₂"
Cut (16) squares 5¹/₂" x 5¹/₂", cut in half diagonally twice to make 62 quarter-square triangles (2 will be leftover)
- Fabric B** Fussy cut (2) side borders 9¹/₂" x 72¹/₂", cut lengthwise (see Step 7)
Fussy cut (2) top/bottom borders 9¹/₂" x 57¹/₂", cut lengthwise
- Fabric C** Cut (16) squares 4¹/₄" x 4¹/₄", cut in half diagonally twice to make 64 quarter-square triangles
Cut (32) squares 3⁷/₈" x 3⁷/₈", cut in half diagonally to make 64 half-square triangles
- Fabric D** Cut (5) squares 5¹/₂" x 5¹/₂", cut in half diagonally twice to make 18 quarter-square triangles (2 will be leftover)
- Fabric E** Cut (7) strips 2¹/₂" x WOF, pieced to make the following:
(2) side borders 2¹/₂" x 66¹/₂"
(2) top/bottom borders 2¹/₂" x 55¹/₂"
- Fabric F** Cut (16) squares 4¹/₄" x 4¹/₄", cut in half diagonally twice to make 64 quarter-square triangles
Cut (20) squares 1⁷/₈" x 1⁷/₈"
- Fabric G** Cut (9) strips 2¹/₂" x WOF for binding
Cut (62) rectangles 1¹/₂" x 9¹/₂" for sashes
Cut (16) squares 3¹/₂" x 3¹/₂"
Cut (80) rectangles 1⁷/₈" x 4¹/₂"
- Fabric H** Cut (2) side borders 1¹/₂" x 70¹/₂", cut lengthwise
Cut (2) top/bottom borders 1¹/₂" x 57¹/₂", cut lengthwise
Cut (64) rectangles 2" x 5¹/₂"
Cut (64) rectangles 2" x 4"
- Backing** Cut (2) panels 40" x 95", pieced to fit quilt top with overlap on all sides

Round the Garden Quilt

Making and Assembling the Quilt

1. Block W: The outer pieced strips in Block W are made longer than needed and trimmed to fit. Make a sample block to be sure that your piecing and pressing techniques result in the right size block, following these directions. Referring to Diagram 1, cut one end of each 2" x 4" Fabric H strip at a 45° angle as shown, cutting half the strips in mirror image.

To be certain that the patches line up as required, on the back side, draw a ¼" seam line along the short edges of a Fabric C 4¼" triangle. Draw seam lines on the angled ends of a Fabric H strip and a mirror-image strip. Align the Fabric H strip with the Fabric C triangle, right sides together, offsetting the patches as needed to match the drawn seam lines (Diagram 2). Stitch along the marked line. Press the H strip away from the triangle (Diagram 3). The two patches should align along the bottom as shown. Hint: You may not need to mark seam lines on the C and H patches once you have made a few blocks.

Align the marked mirror image Fabric H strip with the other side of the triangle and stitch as before (Diagram 4). Press the strip open (Diagram 5). Once you are satisfied with your sewing, make 64 units like this. Repeat these steps with the 5½"-long Fabric H strips to make 64 more units (Diagram 6).

2. Referring to the Block W diagram, sew Fabric F 4¼" triangles to the sides of a Fabric G 3½" square. Press seam allowances away from the center. Sew Fabric C 3⅞" triangles to the sides. Matching centers, sew the shorter H/C/H strips to the sides of the block. Trim even with the top and bottom of the block. Sew the longer H/C/H strips to the top and bottom and trim even with the sides. The block should measure 9½" from edge to edge. Continue in this manner to make 16 Block W.

3. Blocks X, Y, and Z: These blocks are made alike—only the fabrics change. G strips are cut longer than needed and the entire block is trimmed once it's constructed. Sew Fabric G 1⅞" x 4½" strips to opposite sides of a Fabric F 1⅞" square. Press seam allowances toward the G's (Diagram 7). Sew Fabric A 5½" quarter-square triangles to opposite sides of another G strip, aligning the patches as shown (Diagram 8). Press seam allowances toward the G. Repeat to make a second unit like this. Sew the Diagram 8 units to the Diagram 7 unit (Diagram 9). Trim the block to 6½" square as shown in Diagram 10. Make 6 Block X like this.

Referring to the block diagrams, make 10 Block Y, substituting 1 Fabric D triangle for a Fabric A triangle. Likewise, make 4 Block Z by substituting 2 Fabric D triangles for 2 Fabric A triangles.

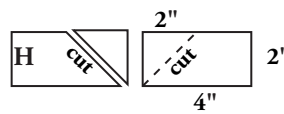


Diagram 1



Diagram 2

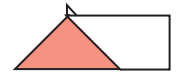


Diagram 3

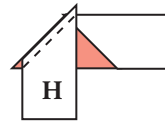


Diagram 4

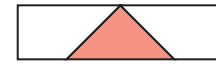


Diagram 5

Make 64

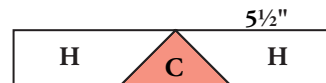
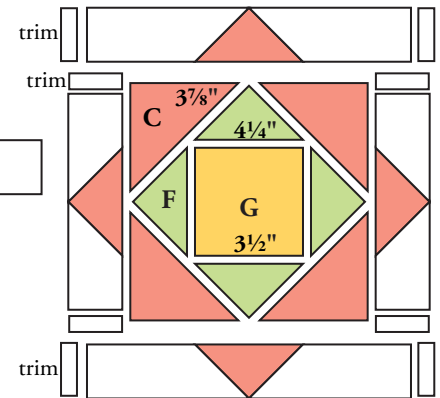


Diagram 6

Make 64



Block W

Make 16

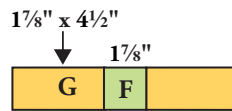


Diagram 7

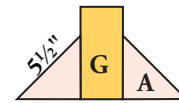


Diagram 8

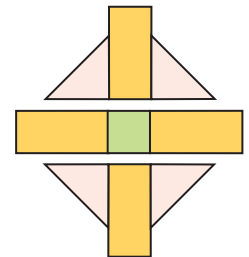


Diagram 9

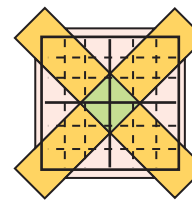
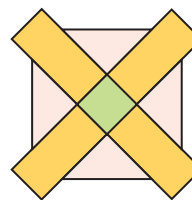
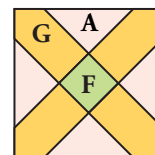
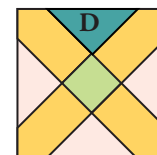


Diagram 10



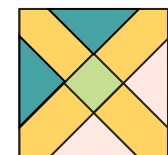
Block X

Make 6



Block Y

Make 10



Block Z

Make 4

G	1 1/2" x 9 1/2"
A	4 1/2" x 9 1/2"
G	

Sash

Make 31

Round the Garden Quilt

4. **Sashes:** Sew Fabric G $1\frac{1}{2}$ " x $9\frac{1}{2}$ " strips to the long sides of Fabric A $4\frac{1}{2}$ " x $9\frac{1}{2}$ " rectangles (Sash diagram). Press seam allowances toward the A patches. Make 31 sashes.

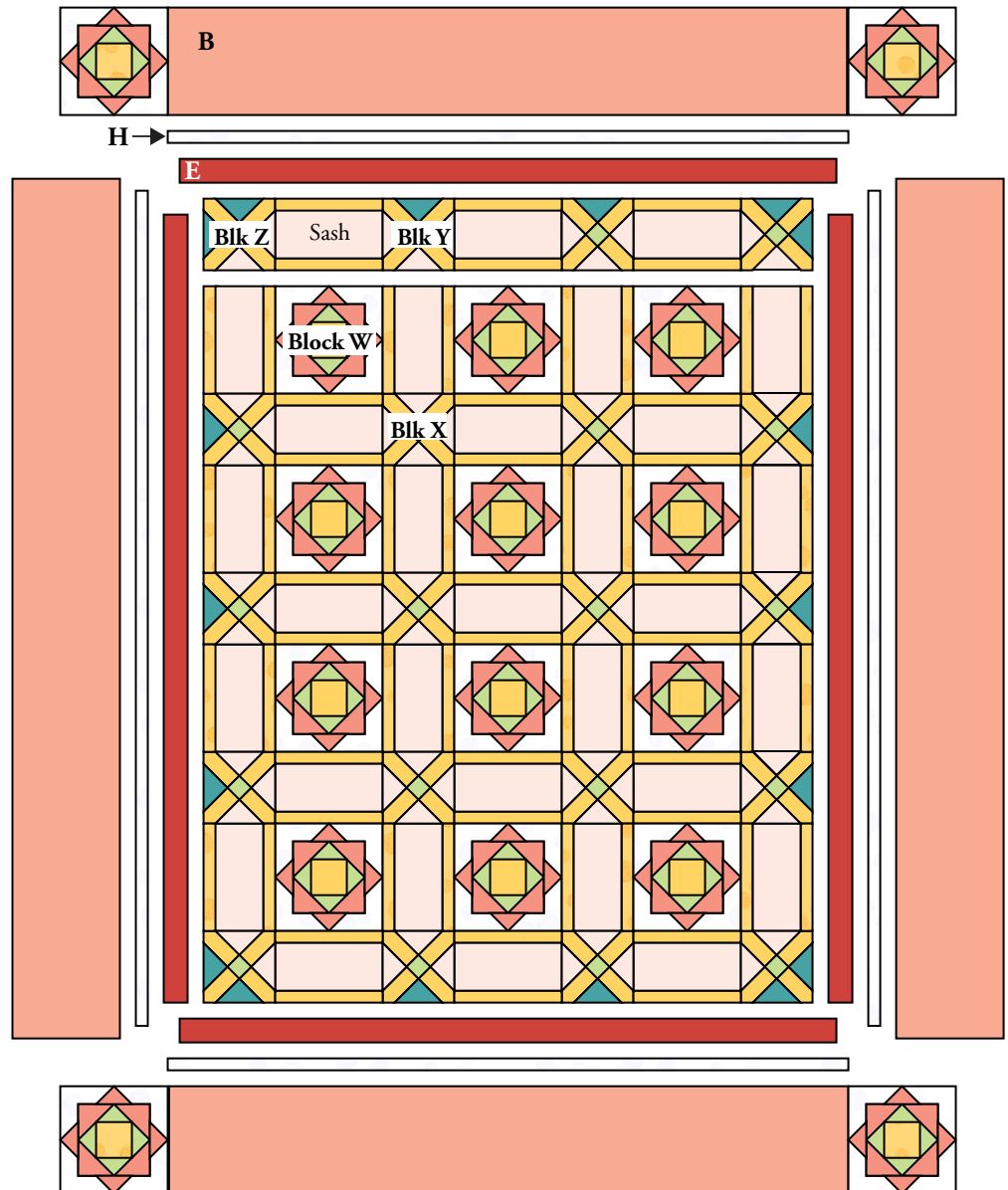
5. Referring to the Quilt Diagram, arrange 12 Block W, the X, Y, and Z blocks, and the sashes in horizontal rows as shown, noting the placement and orientation of the X, Y, and Z blocks. Sew the parts into 5 sash rows and 4 block rows. Join the rows.

6. Sew the long Fabric E borders to the sides and the short borders to the top and bottom. Add the Fabric H borders in the same order.

7. Be sure to cut all Fabric B borders lengthwise from the same part of the striped print, referring to the quilt photograph for placement. Sew the long borders to the sides, turning the borders as shown so the correct side touches the quilt. Sew Block W's to ends of the short borders and sew to the top and bottom.

Finishing the Quilt

8. Layer the quilt with batting and backing and baste. Quilt in the ditch around borders, sashes, and block patches. Quilt around the printed motifs as desired. Bind to finish the quilt.



Quilt Diagram

1384 Broadway
 New York, NY 10018
 (800) 223-5678
 www.andoverfabrics.com

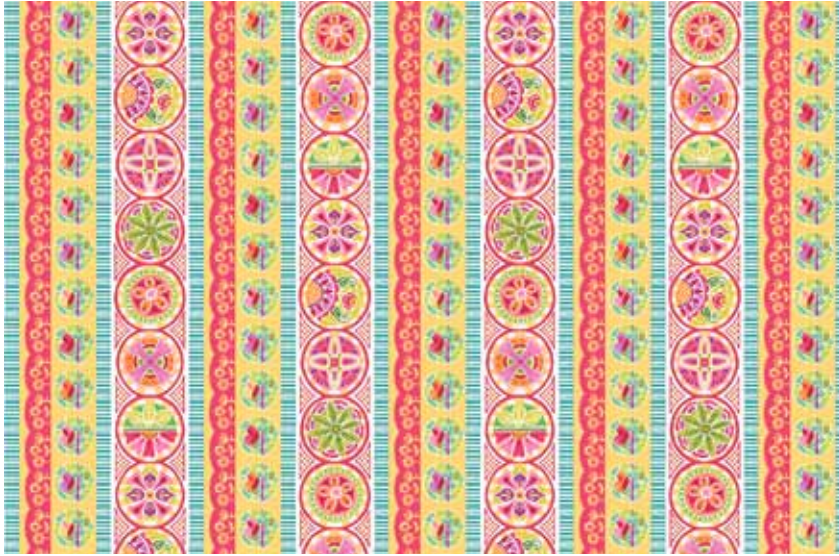
Round the Garden

©Mary Engelbreit Enterprises, Inc.

All Rights Reserved under License to Andover Fabrics Inc.



makower uk



5784-R*



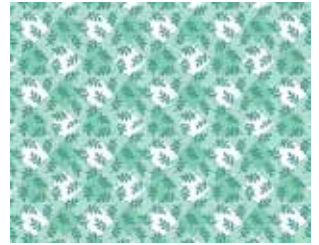
5783-R*



5785-R*



5786-R*



5788-RG



5787-RR*



5787-RG*



5789-R*



5790-RY*



5790-WW*



5784-K



5783-K



5785-K



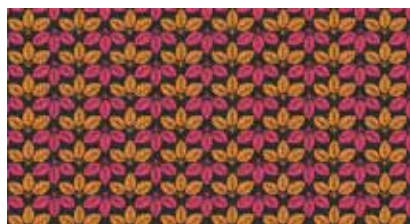
5786-K



5788-KG



5787-KG



5787-K



5789-K



5790-K



5790-KR

*Indicates fabric used in quilt pattern. Fabrics shown are 10% of actual size.

Free Pattern Download Available at www.andoverfabrics.com

5/30/12