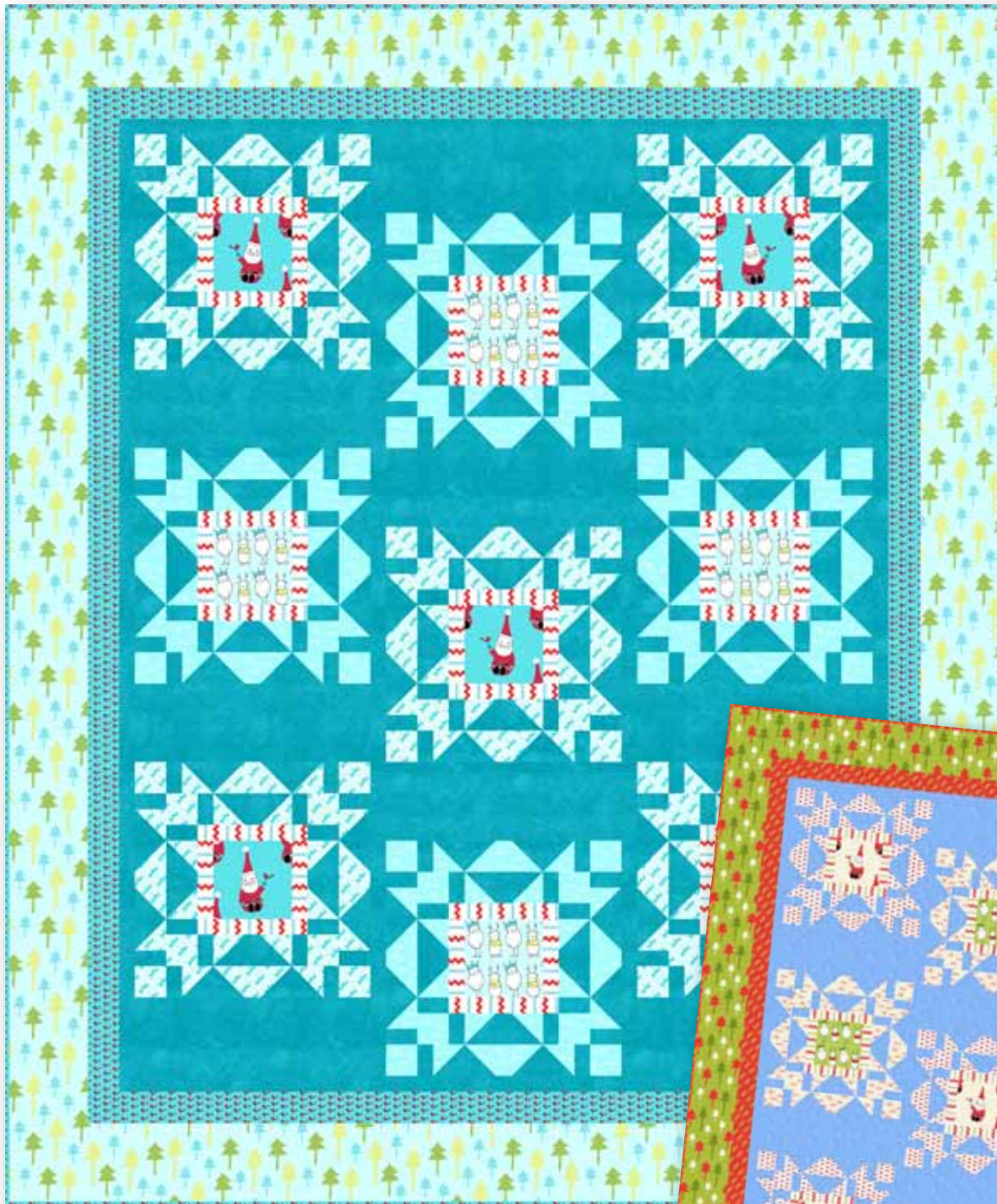


Santa Claus is Coming to Town

*Fabrics by
Marisa and
Creative Thursday™*



Quilt designed by
Heidi Pridemore
Quilt size: 63" x 76"



makower uk®

1384 Broadway
New York, NY 10018
(800) 223-5678
www.andoverfabrics.com

Santa Claus is Coming to Town Quilt

Introducing Andover Fabrics new collection: Meet The Gang by Marisa and Creative Thursday™
 Quilt designed by Heidi Pridemore

Fabric Requirements

		Yardage	Teal	Brown
Fabric A	Block A Center	1/3 yard	5751-T	5751-N
Fabric B	Block B Center	1/3 yard	55752-T	752-N
Fabric C	Outer Border	2 1/2 yards	5753-T	5753-N
Fabric D	Center Border	1/2 yard	5755-BR	5755-N
Fabric E*	Inner Border	1 1/4 yards	5754-T	5756-N
Fabric F	Snowflake One	1 yard	5756-T	5754-N
Fabric G	Snowflake Two	7/8 yard	5757-T	5757-N
Fabric H	Background	3 yards	1867-T16	1867-W2
*Additional fabric required for backing				
Fabric E	Crowns	4 yards	5754-T	5754-N

Quilt finishes 63" x 76"
 Block Size: 15" x 15"

Snowflake Block

- Place one 2 1/2" Fabric F square on the left side of one 2 1/2" x 5 1/2" Fabric H strip, right sides together (fig. 1). Sew across the diagonal of the square from the upper right corner to the lower left corner (fig. 1).

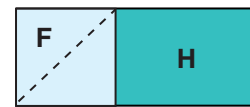


FIG. 1

- Flip open the triangle formed and press (fig. 2). Trim away the excess fabric from behind the triangle leaving a 1/4" seam allowance.



FIG. 2

- Place another 2 1/2" Fabric F square on the right side of the 2 1/2" x 5 1/2" Fabric H strip, right sides together (fig. 3). Sew across the diagonal of the square from the upper left corner to the lower right corner (fig. 3). Flip open the triangle formed and press (fig. 4). Trim away the excess fabric from behind the triangle leaving a 1/4" seam allowance to make one Fabric F inner snowflake unit.
- Repeat Steps 1 and 2 to make twenty Fabric F inner snowflake units total.

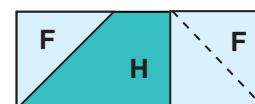


FIG. 3



FIG. 4 make 20

Cutting Directions

Note: Borders are cut the exact lengths required plus 1/4" seam allowances. WOF designates the width of fabric from selvedge to selvedge (approximately 42" wide).

Fabric A Fussy cut (5) 5 1/2" squares centering each on a Santa.

Fabric B Fussy cut (4) 5 1/2" squares centering each on a Reindeer.

Fabric C Cut (2) 5 1/2" x 63 1/2" strips, crosscut and pieced
 Cut (2) 5 1/2" x 66 1/2" strips from the length of fabric.

Fabric D Cut (18) 1 1/2" x 7 1/2" strips.
 Cut (18) 1 1/2" x 5 1/2" strips.

Fabric E* Cut (2) 2 1/2" x 62 1/2" strips, crosscut and pieced.
 Cut (2) 2 1/2" x 53 1/2" strips, crosscut and pieced.
 Cut (7) 2 1/2" x 42" strips for the binding.

Fabric F Cut (160) 2 1/2" squares.
 Cut (20) 1 1/2" x 2 1/2" strips.

Fabric G Cut (128) 2 1/2" squares.
 Cut (16) 1 1/2" x 2 1/2" strips.

Fabric H Cut (36) 2 1/2" x 5 1/2" strips.
 Cut (72) 2 1/2" x 4 1/2" strips.
 Cut (144) 1 1/2" x 2 1/2" strips.
 Cut (9) 5 1/2" x 15 1/2" strips.
 Cut (4) 1 1/2" x 60 1/2" strips, crosscut and pieced.
 Cut two 1 1/2" x 49 1/2" strips, crosscut and pieced.

***Backing** Cut (2) 71" x 42" strips. Piece the strips together and trim to make one 71" x 84" piece for the backing.

Santa Claus is Coming to Town Quilt

4. Repeat Steps 1 and 2 to make sixteen Fabric G inner snowflake units with the thirty-two $2\frac{1}{2}$ " Fabric G squares and remaining $2\frac{1}{2}$ " x $5\frac{1}{2}$ " Fabric H strips (fig. 5).
5. Place one $2\frac{1}{2}$ " Fabric F square on the left side of one $2\frac{1}{2}$ " x $4\frac{1}{2}$ " Fabric H strip, right sides together (Fig. 6). Sew across the diagonal of the square from the upper right corner to the lower left corner (fig. 6). Flip open the triangle formed and press (fig. 7). Trim away the excess fabric from behind the triangle leaving a $\frac{1}{4}$ " seam allowance.
6. Place another $2\frac{1}{2}$ " Fabric F square on the right side of the $2\frac{1}{2}$ " x $4\frac{1}{2}$ " Fabric H strip, right sides together (fig. 8). Sew across the diagonal of the square from the upper left corner to the lower right corner (fig. 8). Flip open the triangle formed and press (fig. 9). Trim away the excess fabric from behind the triangle leaving a $\frac{1}{4}$ " seam allowance to make Fabric F outer snowflake unit.
7. Repeat Steps 5 and 6 to make forty Fabric F outer snowflake units total.
8. Repeat Steps 1 and 2 to make thirty-two Fabric G outer snowflake units with the sixty-four $2\frac{1}{2}$ " Fabric G squares and remaining $2\frac{1}{2}$ " x $4\frac{1}{2}$ " Fabric H strips (fig. 10).
9. Sew one $1\frac{1}{2}$ " x $5\frac{1}{2}$ " Fabric D strip to each side of one $5\frac{1}{2}$ " Fabric A square. Sew one $1\frac{1}{2}$ " x $7\frac{1}{2}$ " Fabric D strip to the top and bottom of the $5\frac{1}{2}$ " Fabric A square to make one $7\frac{1}{2}$ " Fabric A center (fig. 11). Repeat to make five Fabric A centers.
10. Sew one $1\frac{1}{2}$ " x $5\frac{1}{2}$ " Fabric D strip to each side of one $5\frac{1}{2}$ " Fabric B square. Sew one $1\frac{1}{2}$ " x $7\frac{1}{2}$ " Fabric D strip to the top and bottom of the $5\frac{1}{2}$ " Fabric B square to make one $7\frac{1}{2}$ " Fabric B center (fig. 12). Repeat to make four Fabric B centers.
11. Refer to the Snowflake Block F Layout to make one $15\frac{1}{2}$ " Fabric F snowflake block with one Fabric A center, eight $2\frac{1}{2}$ " Fabric F squares, four $1\frac{1}{2}$ " x $2\frac{1}{2}$ " Fabric F strips, sixteen $1\frac{1}{2}$ " x $2\frac{1}{2}$ " Fabric H strips, four Fabric F inner snowflake units and eight Fabric F outer snowflake units. Repeat to make five Fabric F Blocks total.
12. Refer to the Snowflake Block G Layout to make one $15\frac{1}{2}$ " Fabric G snowflake block with one Fabric B center, eight $2\frac{1}{2}$ " Fabric G squares, four $1\frac{1}{2}$ " x $2\frac{1}{2}$ " Fabric G strips, sixteen $1\frac{1}{2}$ " x $2\frac{1}{2}$ " Fabric H strips, four Fabric G inner snowflake units and eight Fabric G outer snowflake units. Repeat to make four Fabric G Blocks total.

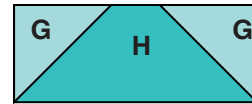


FIG. 5 make 16



FIG. 6

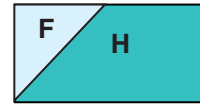


FIG. 7

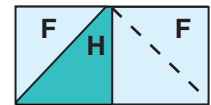


FIG. 8

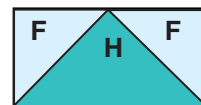


FIG. 9 make 40

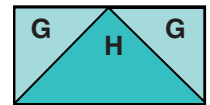


FIG. 10 make 32

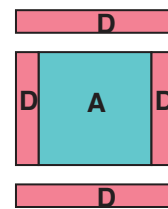


FIG. 11
make 5

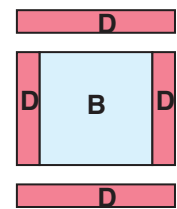
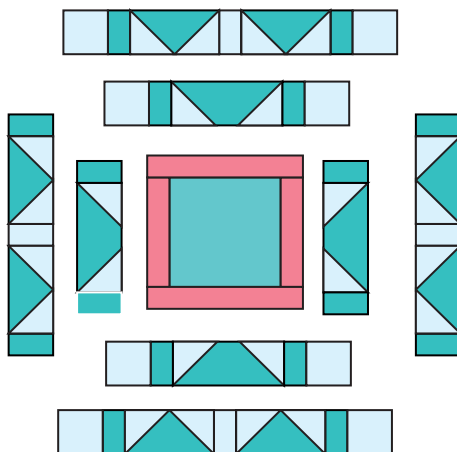
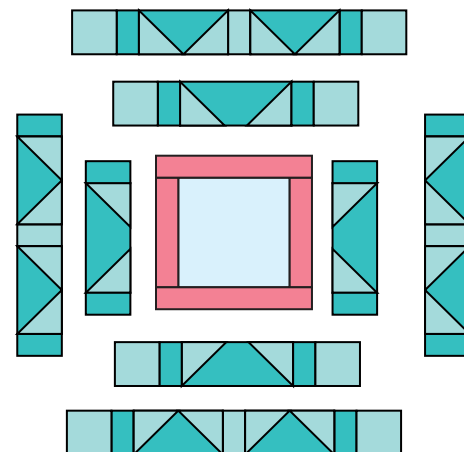


FIG. 12
make 4



SNOWFLAKE F make 5



SNOWFLAKE G make 4

Santa Claus is Coming to Town Quilt

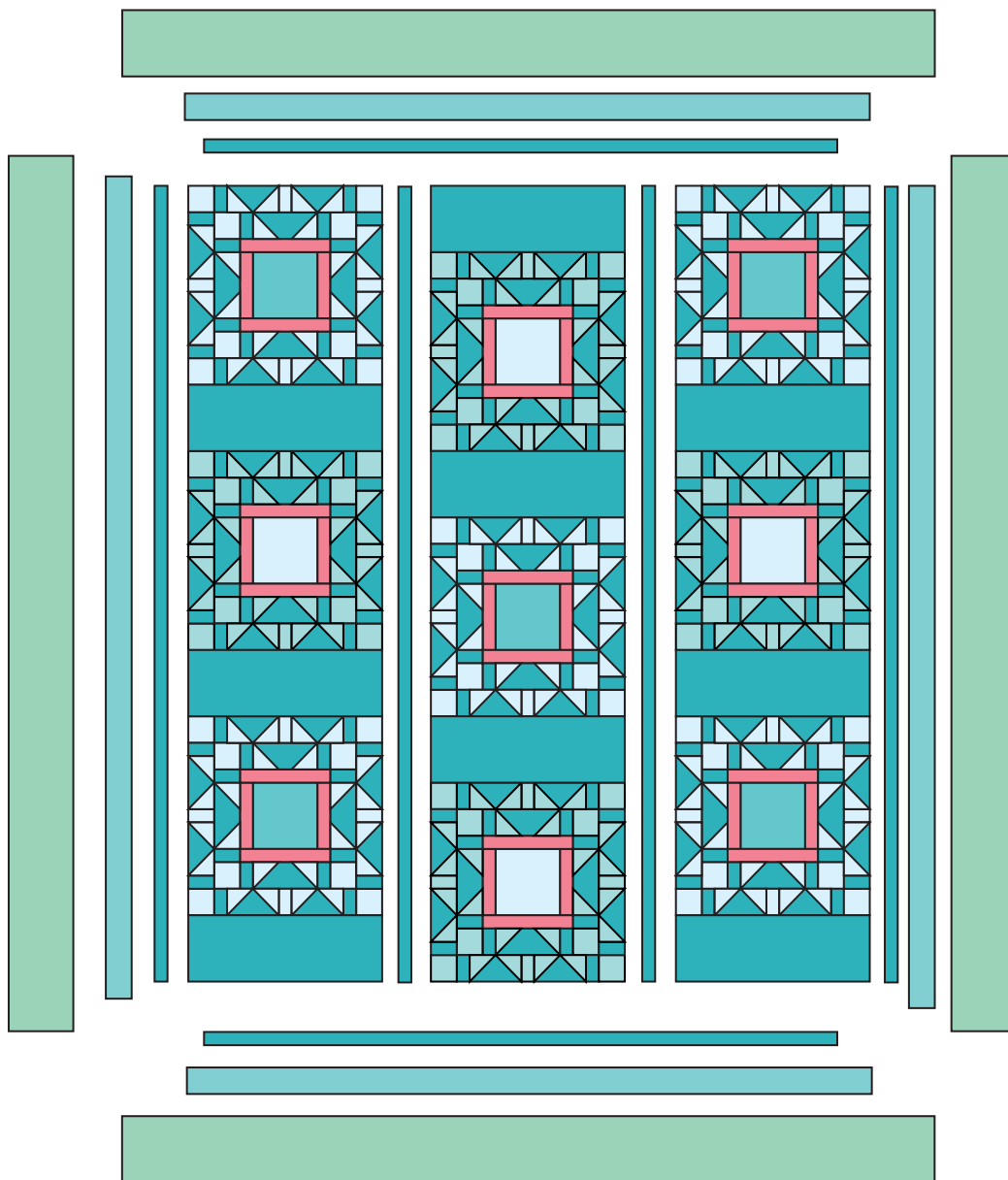
Quilt Top

Refer to the quilt top layout while assembling

13. Sew together two Fabric F Snowflake blocks, one Fabric G Snowflake Block and three 5½" x 15½" Fabric H strips to make Row One. Repeat to make Row Three. Sew together two Fabric G Snowflake blocks, one Fabric F Snowflake Block and three 5½" x 15½" Fabric H strips to make Row Two.
14. Sew together the three pieced rows and four 1½" x 60½" Fabric H strips, alternating them. Sew one 1½" x 49½" Fabric H strip to the top and bottom of the sewn rows to make the 49-1/2" x 62½" quilt top.
15. Sew one 2½" x 62½" Fabric E strip to each side of the quilt top. Sew one 2½" x 53½" Fabric E strip to the top and bottom of the quilt top.
16. Sew one 5½" x 66½" Fabric C strip to each side of the quilt top. Sew one 5½" x 63½" Fabric C strip to the top and bottom of the quilt top.

Finishing the Quilt

17. Layer and quilt as desired. Sew the seven 2½" x 42" Fabric E strips together end-to-end with a 45° seams to make the binding. Fold this long strip in half lengthwise with wrong sides together and press. Bind as desired.



Quilt Assembly Diagram

Santa Claus is Coming to Town

by Marisa and Creative Thursday™



5751-T*



5752-T*



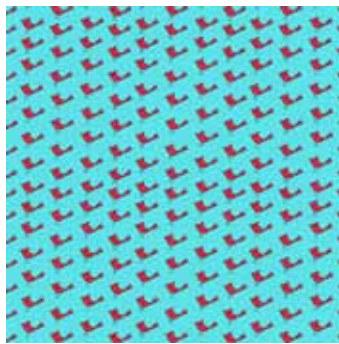
5753-T*



5754-T*



5755-BR*



5756-T*



5757-T*



1867-T16*



5751-N



5752-N



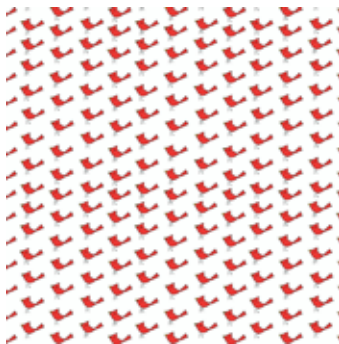
5753-N



5754-N



5755-N



5756-N



5757-N



1867-W2