

Savannah

FABRICS BY JO MORTON



Savannah Homecoming Quilt
Design by: **Candy Hargrove**

Machine Quilted by:
Maggi Honeyman

Quilt Size: **67½" x 79½"**

andoverfabrics.com



About Savannah

I was on the lookout for a 'mother' floral that had the feel of the large floral in 'Annandale' (2010). I was so happy to find this beautiful floral and add appropriate companions. Determined this group should be blue/brown for fresh appeal. — *Jo Morton*

andover

makower uk
The Henley Studio

Free Pattern Download Available

1384 Broadway New York, NY 10018

Tel. (800) 223-5678 • andoverfabrics.com

Savannah Homecoming Quilt



Introducing Andover Fabrics new collection: **Savannah** by Jo Morton

Quilt designed and made by Candy Hargrove, quilted by Maggi Honeyman

Quilt finishes 67½" x 79½"

32 Blocks: 7½" x 7½"

Harmony and peace flow from this quilt. The floral fabrics include vases of bouquets, lush leaves, and unusual stripes. The variety of scale in the prints adds a rich texture to these time-honored blocks, a variation of the Farmer's Daughter block. Because the blocks are "scrappy," any combination of prints will be charming.

Cutting Directions

Note: Read assembly directions before cutting patches. All measurements are cut sizes and include ¼" seam allowances. A fat ¼ is an 18" x 20"-22" cut. Border measurements include extra length for insurance. WOF designates the width of fabric from selvedge to selvedge (approximately 42" wide).

Hint: Cut patches for one block at a time. That way, you won't cut too many patches of any one fabric.

Cutting for one block:

From light print:

Cut (8) squares 2" x 2"

Cut (4) squares 2½" x 2½" for HST
(to be trimmed)

From medium/dark print #1:

Cut (5) squares 2" x 2"

Cut (4) squares 2½" x 2½" for HST
(to be trimmed)

From medium/dark print #2:

Cut (4) squares 2" x 2"

Fabric A

Cut (2) top/bottom borders 8½" x 69",
cut lengthwise

Cut (2) side borders 8½" x 65", cut lengthwise

Fabric B

Cut (8) strips 2½" x WOF for binding

Fabric Requirements

		Yardage	Fabric
Fabric A	outer border	2 yards	7158-B
Fabric B	binding	⅝ yard	7161-BN
Fabric C	inner border, sash	1 yard	7161-NO
Fabric D	setting, blocks	1 yard	7168-B
8 Dk. Fat ¼'s	blocks	fat ¼ yard each	
	7159-B 7160-BK	7164-B	7164-BN
	7165-BN 7165-NR	7166-BN	7168-BK
6 Lt. Fat ¼'s	blocks	fat ¼ yard each	
	7162-BL 7162-NL	7166-BL	
	7166-NL 7167-BL	7167-NL*	
*Backing		5 yards	7167-NL

Fabric C

Cut (2) side borders 1½" x 63", cut crosswise and pieced

Cut (2) t/b borders 1½" x 53", cut crosswise and pieced

Cut (80) sashes 1½" x 8"

Fabric D

Cut (4) squares 13½" x 13½", cut in half diagonally twice
to make 16 quarter-square setting triangles
(2 will not be needed)

Cut (2) squares 7¾" x 7¾", cut in half diagonally
to make 4 half-square triangles for corners

Cut (49) cornerstones 1½" x 1½"

Cut sets for (3 or 4) blocks as listed below for 8 Fat ¼'s

8 Dk. Fat ¼'s

From each: Cut (3 or 4) sets of (5) squares 2" x 2"
(32 sets total)

Cut (3 or 4) sets of (4) squares 2½" x 2½" for HST
(32 sets total)

Cut (3 or 4) sets of (4) squares 2" x 2" (32 sets total)

6 Lt. Fat ¼'s

From each: Cut 5 or 6 sets of (8) squares 2" x 2"
(32 sets total)

Cut (5 or 6) sets of (4) squares 2½" x 2½" for HST
(32 sets total)

Backing

Cut (2) panels 38" x 88", pieced to fit quilt top with
overlap on all sides

Savannah Homecoming Quilt

Making the Quilt

1. The blocks use half-square triangles (HST) that finish $1\frac{1}{2}$ " square. Use your favorite method to make HST, or follow these directions. Draw a diagonal line on the wrong side of each light fabric $2\frac{1}{2}$ " square (Diagram 1). Place a marked square on a medium/dark $2\frac{1}{2}$ " square, right sides together. Sew $\frac{1}{4}$ " seam on each side of the marked line; cut apart on the marked line. Press open to make 2 pieced HST. Trim each HST to 2" square if needed. Make 8 HST using the same fabrics for 1 block. (The quilt requires a total of 256 HST).

2. Referring to the Block diagram, arrange 8 light 2" squares, 8 HST, 5 medium/dark 2" squares of the same dark fabric as the HST, and 4 squares of a different medium/dark fabric. Join the patches into 5 rows. Join the rows. Make 32 blocks.

3. The order of piecing is important, so pay careful attention to the Quilt Center Diagram. Arrange the blocks and Fabric C sashes in rows, arranging the blocks so that each fabric is scattered across the quilt. Once you are happy with the arrangement of color, join the blocks with sashes to make 8 diagonal rows.

4. Referring to the diagram, arrange Fabric C sashes and fabric D corner posts to make sash rows, counting patches carefully to make each sash row the correct length. Sew a sash row to the correct edge of each block row. Sew Fabric D quarter-square setting triangles to ends of rows as shown. Note that the center (longest) sash row joins the two halves of the quilt. Sew a Fabric D corner triangle to each corner.

5. Trim the setting triangles if needed. Position a large square acrylic ruler at a corner of the quilt, aligning the $\frac{1}{4}$ " line of the ruler with the tips of the corner posts, leaving a generous $\frac{1}{4}$ " seam allowance beyond the corner of the little squares. Trim along the edge of the ruler. Shift the ruler as needed and trim all sides of the quilt.

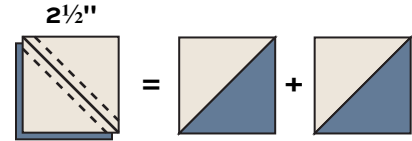
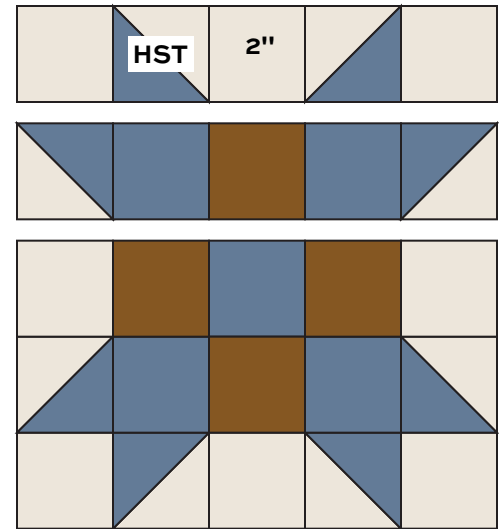


Diagram 1 – Make 8 for 1 block (256 total)



Block – Make 32

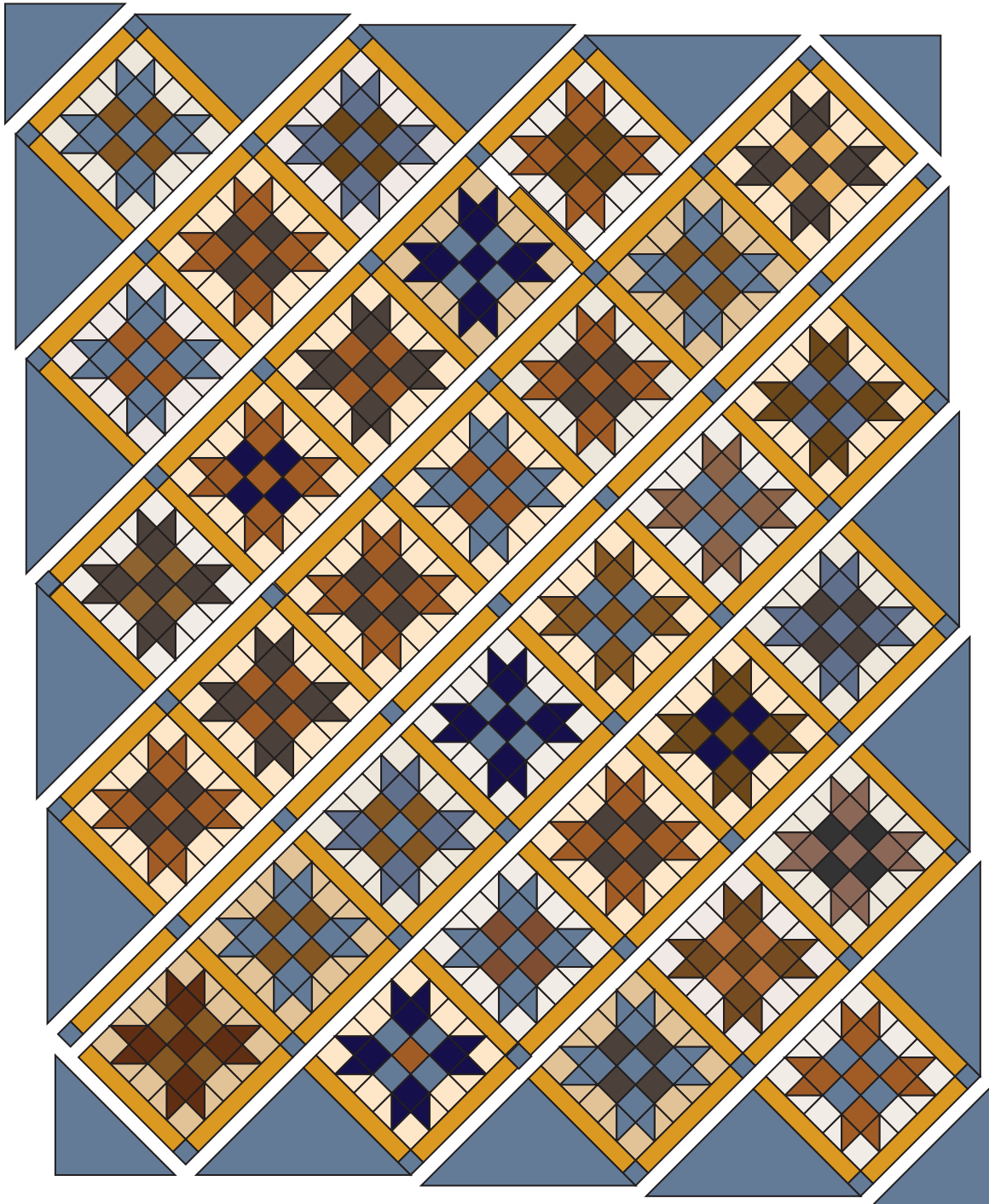
6. Measure through the center of the quilt from raw edge to raw edge, top to bottom. Cut the narrow side borders this measurement. Sew to the quilt's sides. Measure the quilt from side to side, including the added border. Cut the top/bottom borders this measurement. Sew to the top and bottom.

7. Add the wide outer borders in the same manner.

Finishing the Quilt

8. Layer the quilt with batting and backing and baste. Quilt in the ditch around borders, sashes, and block patches. Quilt a motif of your choice in the blue setting triangles. Quilt around the printed motifs in the outer border. Bind to finish the quilt.

Savannah Homecoming Quilt



Quilt Center Diagram

Savannah

FABRICS BY JO MORTON



7158-B*



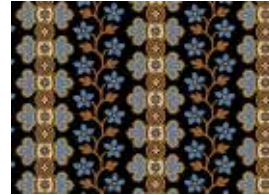
7158-N



7159-B*



7159-N



7160-BK*



7160-N



7161-BN*



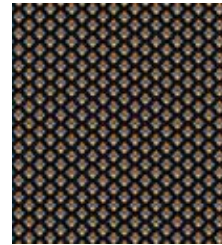
7161-NO*



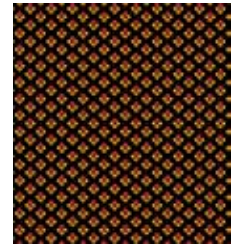
7161-NR



7168-B*



7168-BK



7168-NK



7162-BL*



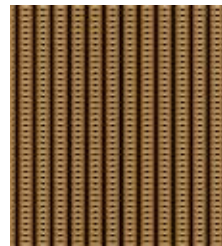
7162-NL*



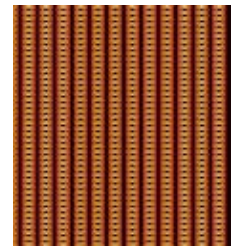
7163-BK



7163-N



7165-BN*



7165-NR*



7164-B*



7164-BN*



7164-NO



7164-NR



7167-BL*



7167-NL*



7166-BL*



7166-BN*



7166-BY



7166-NL*



7166-NR

*Indicates fabrics used in quilt pattern. Fabrics shown are 25% of actual size.

andover



makower uk
The Henley Studio

Free Pattern Download Available

1384 Broadway New York, NY 10018
Tel. (800) 223-5678 • andoverfabrics.com