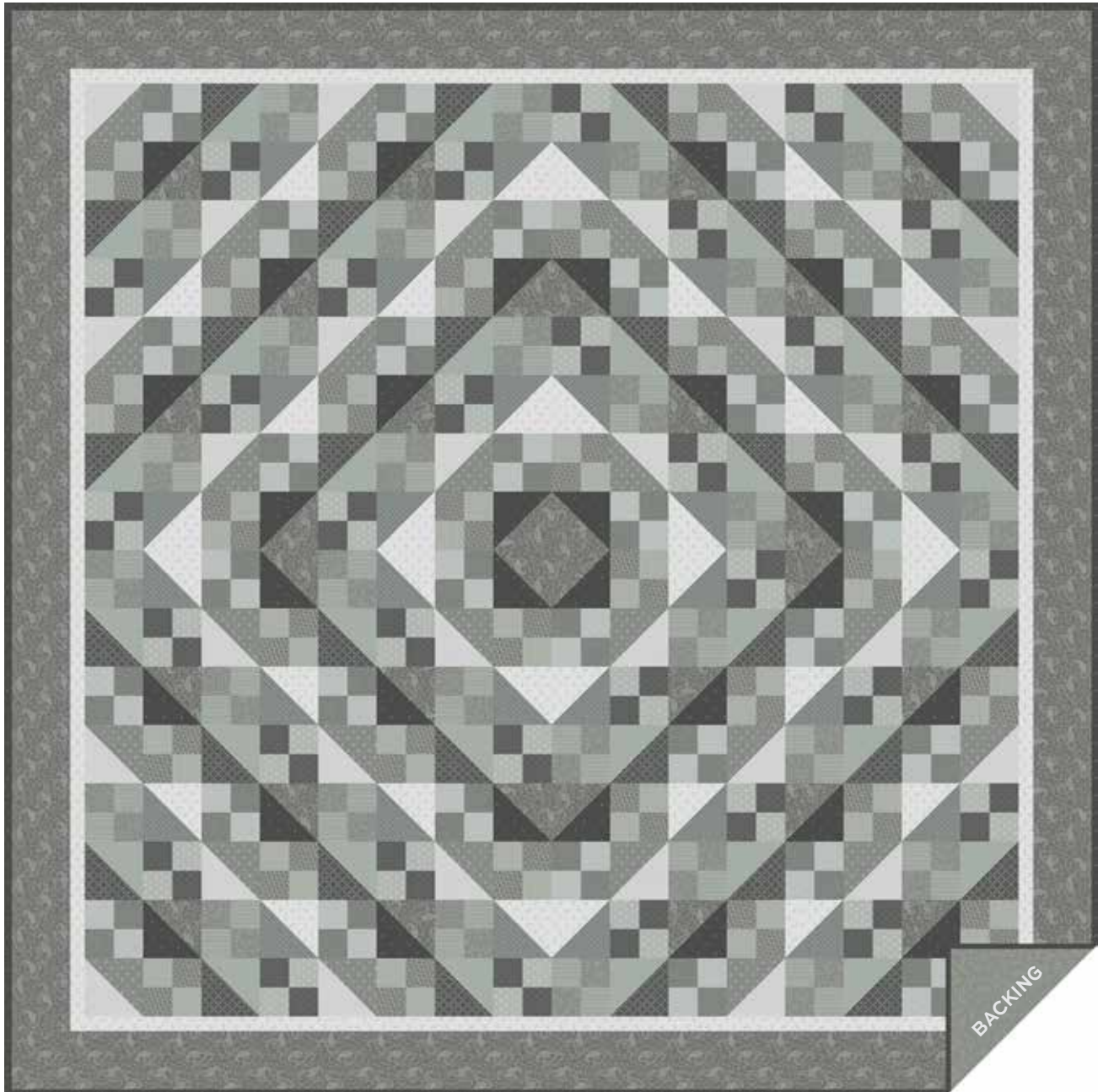


Smoke and Ashes

KATHY HALL



Cloudy Days Quilt designed
by: **Janet Houts**

Quilt Size: **74" x 74"**

andoverfabrics.com

About Smoke and Ashes

Grays are right on trend for home décor. By incorporating these subtle shades, you can easily create an ambience and a timelessness for your home with Smoke & Ashes.

andover



[makower uk](http://makower.uk)

Free Pattern Download Available

1384 Broadway New York, NY 10018
Tel. (800) 223-5678 • andoverfabrics.com

Cloudy Day Quilt



Introducing Andover Fabrics new collection: **SMOKE AND ASHES** by Kathy Hall

Quilt designed by Janet Houts

Quilt finishes 74" x 74"

32 Block V: 8" x 8"

32 Block W: 8" x 8"

Subtle shades of gray and charcoal prints give this traditional quilt topper its charm. The piecing is easy enough for a beginning quilter, although attention must be paid while arranging the blocks into the "trip around the world" setting.

Cutting Directions

Note: Read assembly directions before cutting patches. All measurements are cut sizes and include 1/4" seam allowances. WOF designates the width of fabric from selvedge to selvedge (approximately 42" wide).

Fabric A, B, C, D, G, I, J, M

From each:

Cut (4) strips 2 1/2" x 42"

Fabric E, F, H, O, P

From each:

Cut (16) squares 5" x 5" for HST (read Step 1)

Fabric K

Cut (7) strips 1 1/2" x WOF, pieced to make the following:

(2) top/bottom borders 1 1/2" x 66 1/2"

(2) side borders 1 1/2" x 64 1/2"

Cut (16) squares 5" x 5" for HST (read Step 1)

Fabric L

Cut (8) strips 2 1/2" x WOF for binding

Cut (16) squares 5" x 5" for HST (read Step 1)

Fabric N

Cut (2) top/bottom borders 4 1/2" x 74 1/2", cut lengthwise

Cut (2) side borders 4 1/2" x 66 1/2", cut lengthwise

Cut (16) squares 5" x 5" for HST (read Step 1)

Backing

Cut (2) panels 42" x 82", pieced to fit quilt top with overlap on all sides

Fabric Requirements

		Yardage	Fabric
Fabric A	blocks	3/8 yard	9300-C
Fabric B	blocks	3/8 yard	9301-C
Fabric C	blocks	3/8 yard	9302-C
*Fabric D	blocks	3/8 yard	9303-C
Fabric E	blocks	3/8 yard	9304-C
Fabric F	blocks	3/8 yard	9305-C
Fabric G	blocks	3/8 yard	9306-C
Fabric H	blocks	3/8 yard	9307-C
Fabric I	blocks	3/8 yard	9308-C
Fabric J	blocks	3/8 yard	9309-C
Fabric K	blocks, border	3/4 yard	930-10-C1
Fabric L	blocks, binding	1 yard	9311-C
Fabric M	blocks	3/8 yard	9312-C
Fabric N	blocks, border	2 1/4 yards	9313-C
Fabric O	blocks	3/8 yard	9314-C
Fabric P	blocks	3/8 yard	9315-C
*Backing		4 3/4 yards	9303-C

Making the Quilt

1. The blocks have half-square triangle units (HST) that finish 4" square. If you cut the print squares 5", it may be necessary to trim them later. If you prefer not to trim, cut squares 4 7/8" x 4 7/8" instead. You may wish to make a test HST following Step 2 before cutting all the squares either 4 7/8" or 5".
2. Referring to the quilt and block diagrams, arrange the 5" (4 7/8") squares into 4 combinations as shown. Draw a diagonal line on the wrong side of each lighter square (Diagram 1). Place a marked square on a second square, right sides together. Sew 1/4" seam on each side of the marked line; cut apart on the marked line. Press open to make pieced HST units. Trim the units to 4 1/2" x 4 1/2" if needed. Make 32 HST in each of the 4 combinations (128 total). Set aside.

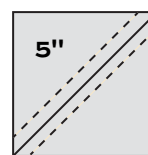
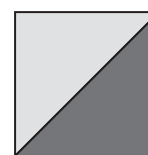


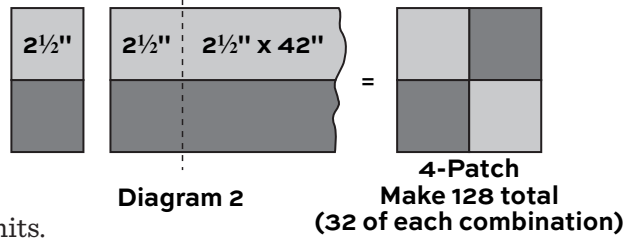
Diagram 1



HST - Make 32 of each combination

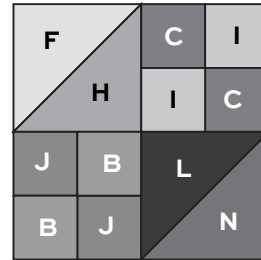
Cloudy Day Quilt

3. Arrange the 2½"-wide strips into the 4 combinations shown in the block diagrams. Referring to Diagram 2, join a light and a dark/medium strip to make a band. Press the seam allowance toward the lighter fabric. Make 4 bands in each of 4 combinations. From each band, cut 16 segments 2½" wide. Cut a total of 64 segments of each combination. Join 2 like segments to make a 4-patch unit. Make a total of 128 4-patch units.

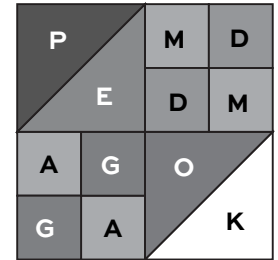


4. Referring to the block diagrams, make 32 Block V and 32 Block W.

5. The blocks are joined to make each quarter of the quilt. All the quarters are made the same, and are rotated to form the overall design. Referring to the Quilt Diagram, join 8 Block V and 8 Block W alternately to make 4 horizontal rows of 4 blocks each. Do not join blocks until you are satisfied that the blocks are oriented correctly. Join the blocks into 4 rows, and then join the rows. Make 3 more quarters just like the first. Rotate each quarter 90 degrees as shown by the labels for the "V" blocks in the center. Join the quilt quarters.



Block V – Make 32

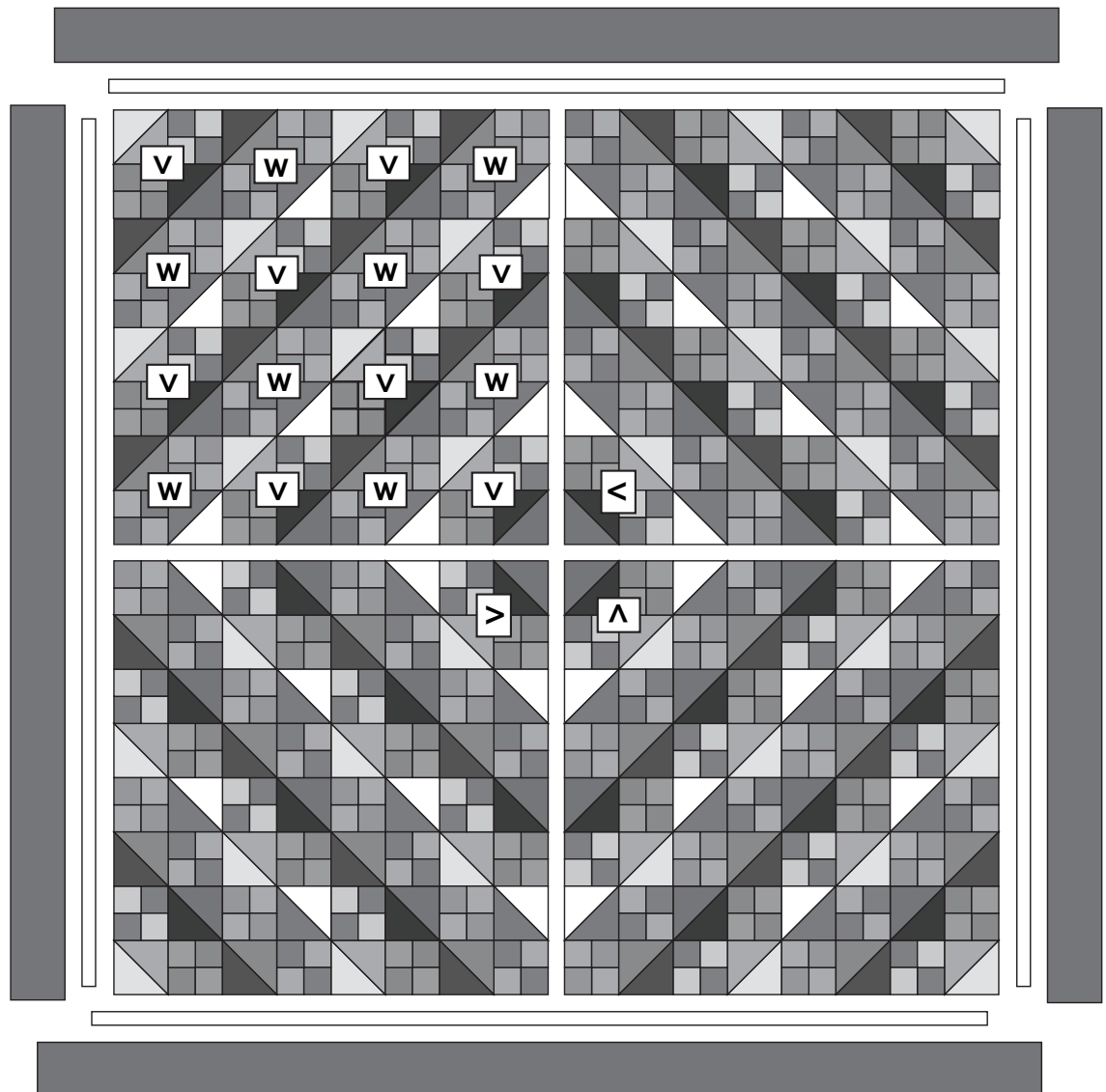


Block W – Make 32

6. Sew narrow borders to the sides, and then to the top and bottom of the quilt. Repeat for the wide outer borders.

Finishing the Quilt

7. Layer the quilt with batting and backing and baste. Quilt in the ditch around borders and block patches. Or quilt an overall design from side to side. Bind to finish the quilt.



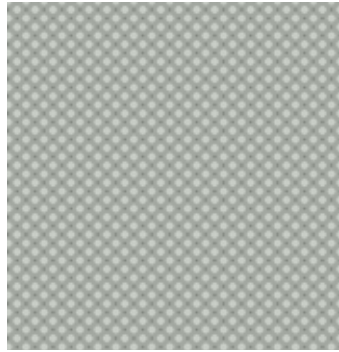
Quilt Diagram

Smoke and Ashes

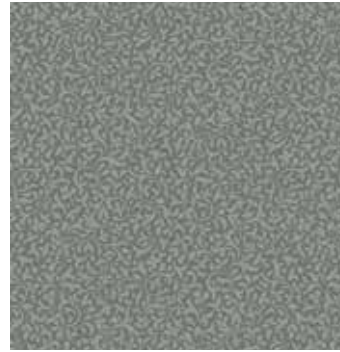
KATHY HALL



9300-C



9301-C



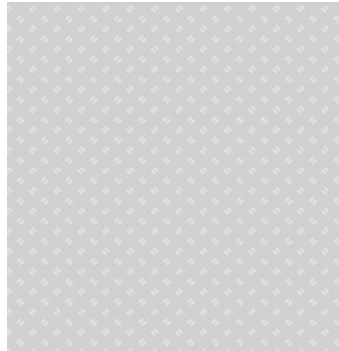
9302-C



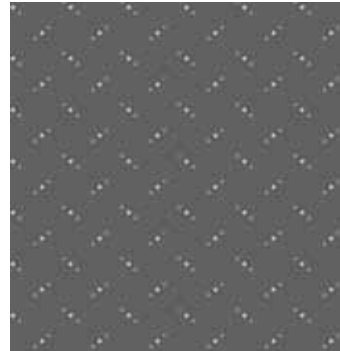
9303-C



9304-C



9305-C



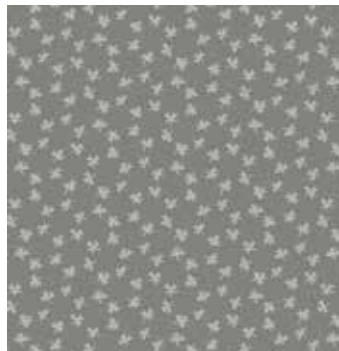
9306-C



9307-C



9308-C



9309-C



9310-C1



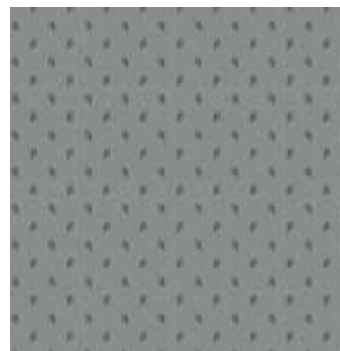
9311-C



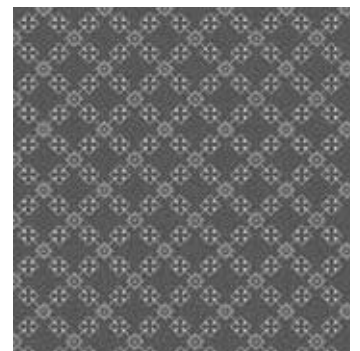
9312-C



9313-C



9314-C



9315-C

All fabrics are used in quilt pattern. Fabrics shown are 50% of actual size.

andover



[makower uk](http://makower.uk)

Free Pattern Download Available

1384 Broadway New York, NY 10018
Tel. (800) 223-5678 • andoverfabrics.com