

Spice Train Quilt



*Introducing
Andover Fabrics new collections:*

**Seneca Shirtings and
Cinnamon & Spice**

Fabrics by Jo Morton

Quilt designed and made by Candy Hargrove
Machine quilted by Maggi Honeyman

Finished size: 63½" x 79½"



makower uk®

1384 Broadway · New York, NY 10018 · (800) 223-5678
www.andoverfabrics.com

Spice Train Quilt

*Introducing Andover Fabrics new collections: Seneca Shirtings and Cinnamon & Spice by Jo Morton.
Quilt designed and made by Candy Hargrove. Machine quilted by Maggi Honeyman.*

Welcome

This lovely traditional quilt owes its coordinated scrappy look to the use of fabrics from two of Jo Morton's new collections. With colors that mesh beautifully and easy piecing, this quilt will bring a classic touch to your home in no time.

Note: After cutting border strips from the Rust/Gold Crescent/Branch Print and the Dark Yellow/Red Trefoil Print, set aside the remainder of fabric for block piecing. These fabrics are considered dark when piecing.

Quilt finishes 63½" x 79½"
48 Jacob's Ladder Blocks: 8" x 8"

Fabric Requirements and Cutting Directions

3982-YO 7/8 yard **Dark Yellow/Red Trefoil Print (inner border, blocks)**

Cut (2) 2½" x 64½" strips, pieced from 4 width of fabric strips

Cut (2) 2½" x 52½" strips, pieced from 3 width of fabric strips

***3225-ON** 1¾ yards **Rust/Gold Crescent/Branch Print (outer border, blocks)**

Cut (2) 6" x 68½" strips, pieced from 4 width of fabric strips

Cut (2) 6" x 63½" strips, pieced from 4 width of fabric strips

¼ yard **each** of the 14 **light** fabrics below.

3993-LN Ecru/Brown Crescent Print

3672-LK Cream/Black Stars Print

3994-LN Tan/Brown Feathered Loop Print

3995-LN Cream/Brown Leaf Spray Print

3997-LR Ecru/Blue/Red Wave Print

3998-LB Cream/Blue Sprig Print

3996-LK Cream/Black Dashed Stripe

3995-LR Ecru/Black/Red Leaf Spray Print

3994-LL Ecru/Black Feathered Loop Print

3997-LN Tan/Gold Wave Print

3672-LL Light Brown/Brown Star Print

3998-LK Ecru/Black Sprig Print

3996-LR Tan/Red Dashed Stripe

***3993-LL** Ecru/Black Crescent Print

From the above 14 **light** fabrics, cut a **total** of:

(32) 2½" x 17" strips

(48) 4⅞" squares

¼ yard **each** of the 15 **dark** fabrics below.

3981-O Dark Orange/Tan Cross Print

3982-O Orange Trefoil Print

3889-RN Rust/Orange Vine Print

3980-N Dark Brown Magnifying Glass Print

3225-O Gold/Brown Crescent/Branch Print

3980-R Rust Magnifying Glass Print

3791-RN Dark Brown/Rust Stripe

3983-N Brown Plaid/Roses Print

3889-N Dark Brown/Orange Vine Print

3982-N Gold Trefoil Print

3227-RN Dark Brown/Gold/Red Woven Print

3981-N Brown/Tan Cross Print

2474-R Red/Tan Arc Print

3983-RN Red/Brown Plaid/Roses Print

3886-N Dark Brown/Red Heart Print

From the above 15 **dark** fabrics and the 2 **border** fabrics, cut a **total** of:

(32) 2½" x 17" strips

(48) 4⅞" squares

**Additional fabric required for backing and binding. See below.*

3993-LL 5 yards **Ecru/Black Crescent Print (backing)**

Cut and piece lengthwise to fit quilt top with 4" overlap on all sides.

3225-ON ¾ yard **Rust/Gold Crescent/Branch Print (binding)**

Cut (8) 2½" x width of fabric strips

Spice Train Quilt

Piecing the Blocks

1. Referring to Diagram A-1, stitch together 1 light 17" strip and 1 dark 17" strip to make strip set. Press seam allowance toward dark side. Make 32 total strip sets (Diagram A-2). Cut 192 total 2½" segments from strip sets (Diagram A-2).
2. Sew together 2 segments as shown in Diagram B to make 96 total four-patches.
3. Referring to Diagram C, draw a diagonal line on wrong side of any light 4⅞" square. Place marked square on any dark 4⅞" square, right sides together, aligning raw edges. Sew ¼" seam on each side of marked line; cut apart on line. Press open to make pieced squares. Make 96 total.
4. Watching orientation closely, stitch together 2 pieced squares and 2 four-patches to make Jacob's Ladder Block (Diagram D). Make 48 total.

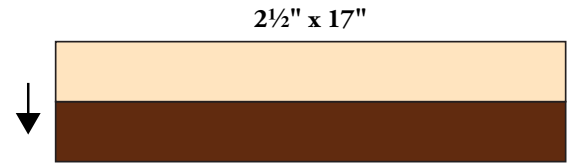


Diagram A-1

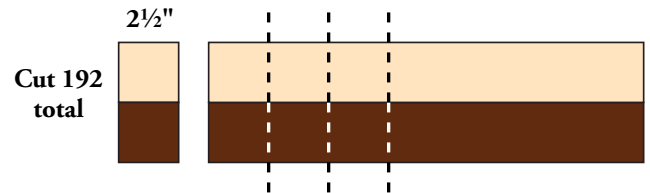


Diagram A-2

Assembling the Quilt Top

Note: Refer closely to Quilt Diagram and photo for orientation of blocks. You may wish to arrange your squares on a design wall or other large flat surface prior to stitching.

5. Stitch 8 rows of 6 blocks each.
6. Stitch rows together.
7. Sew Dark Yellow/Red Trefoil Print 64½" strips to sides. Sew Dark Yellow/Red Trefoil Print 52½" strips to top and bottom. Stitch Rust/Gold Crescent/Branch Print 68½" strips to sides. Stitch Rust/Gold Crescent/Branch Print 63½" strips to top and bottom.



Diagram B

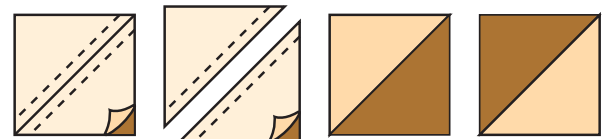


Diagram C

Finishing the Quilt

8. Layer quilt with batting and Ecu/Black Crescent Print backing. Quilt as desired. Bind with Rust/Gold Crescent/Branch Print to finish the quilt.

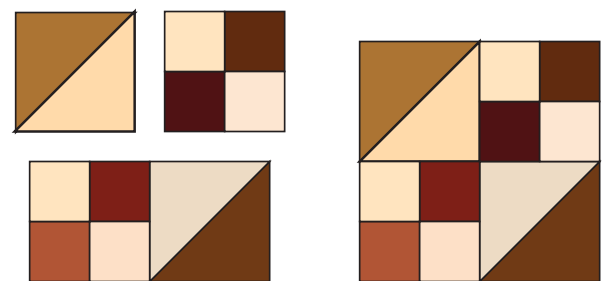
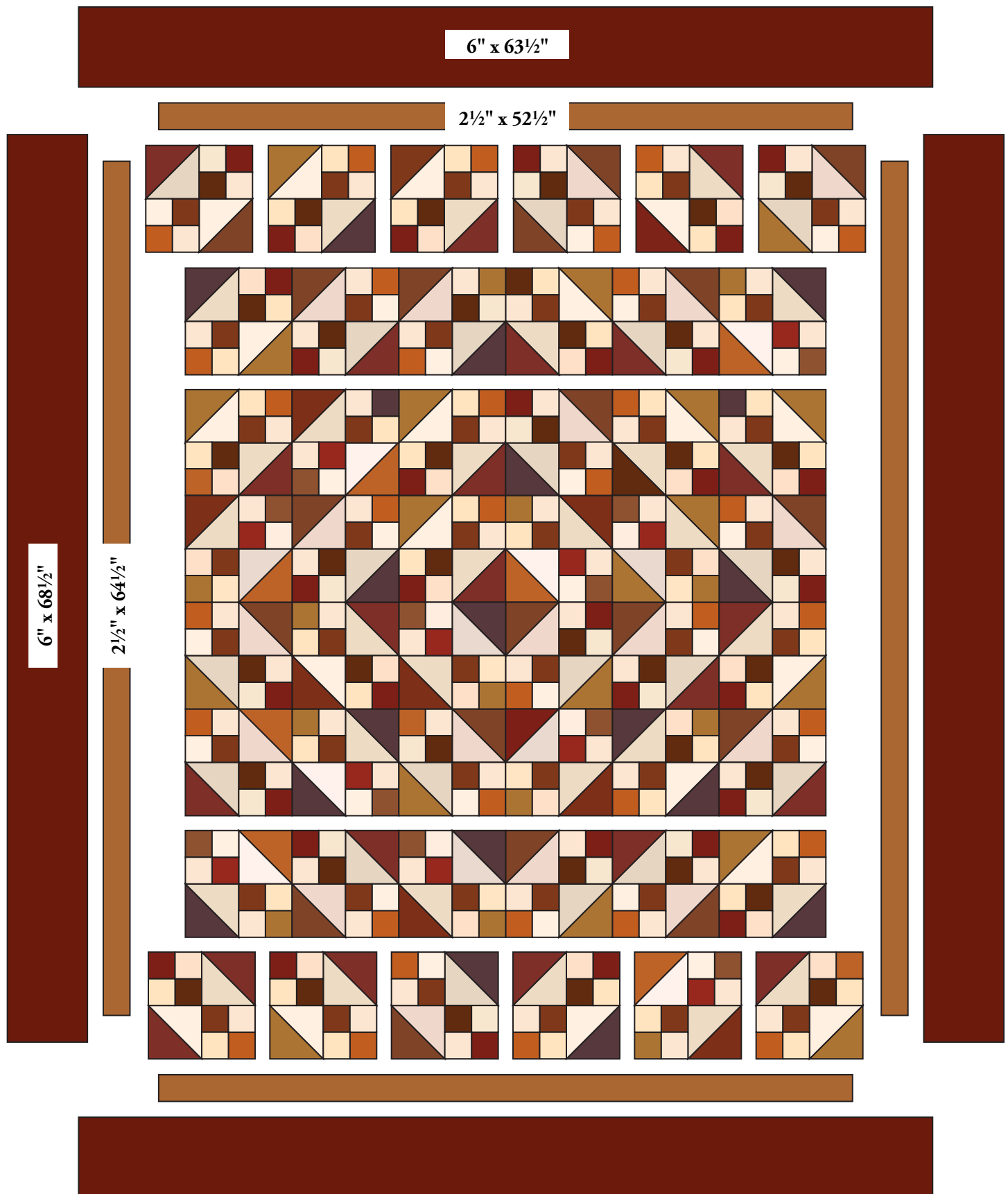


Diagram D

Spice Train Quilt



Quilt Diagram

Cinnamon & Spice

by Jo Morton



2474-R



3225-ON



3225-O



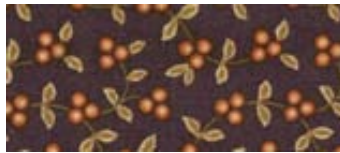
3227-RN



3791-RN



3889-RN



3889-N



3980-R



3980-N



3981-O



3981-N



3886-N



3982-N



3982-O



3982-YO



3983-N



3983-RN

Seneca Shirtings

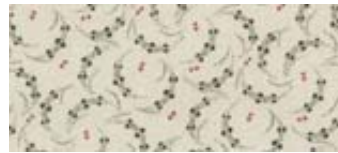
by Jo Morton



3672-LK



3672-LL



3933-LN



3933-LL



3994-LN



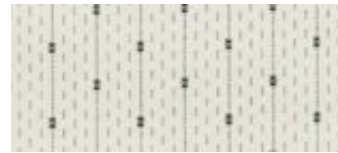
3994-LL



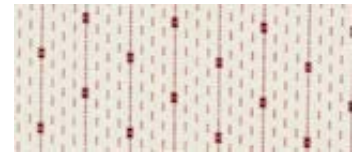
3995-LN



3995-LR



3996-LK



3996-LR



3997-LR



3997-LL



3998-LB



3998-LK



makower uk[®]

1384 Broadway • New York, NY 10018 • (800) 223-5678
www.andoverfabrics.com