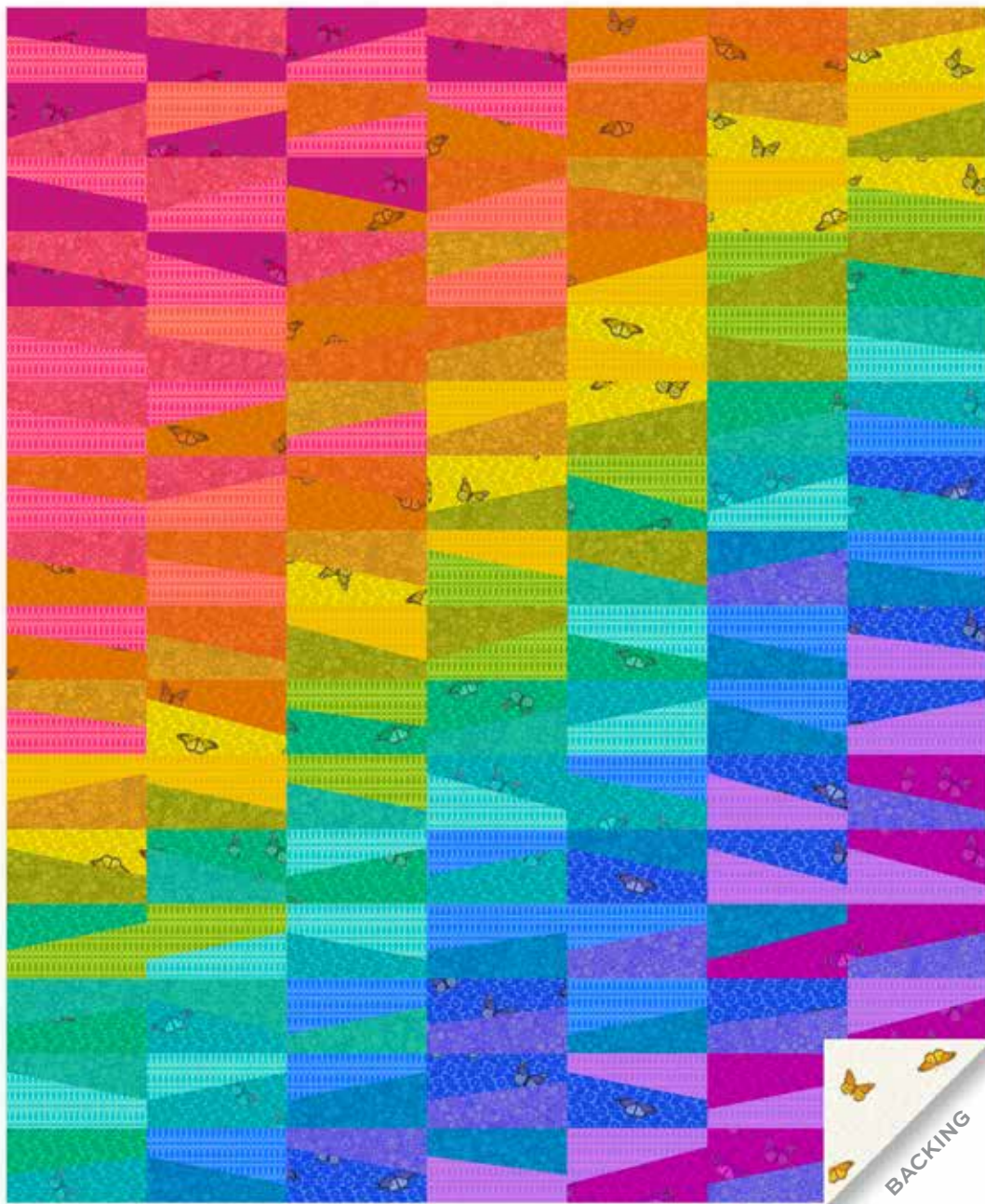


Sun Print 2024

Alison Glass



Cobblestone Quilt designed by: **Alison Glass**
Quilt Size: **52½" x 64"** • Skill Level: **Beginner**

Cobblestone Quilt

Introducing Andover Fabrics new collection: **SUN PRINT 2024** by Alison Glass

Quilt designed by Alison Glass

Quilt finishes 52½" x 64"

What a fun, vibrant quilt that is suitable for a beginning quilter, or someone who wants a quick throw-size project. The rainbow shift of colors allows for a scrappy look that can be arranged in any way you choose. The butterfly prints add a touch of whimsy.

Fabric Requirements

	Yardage	Fabric	
21 Brights	blocks	fat ¼ each	
672-B	672-E	672-G1	672-O
672-P1	672-T	672-Y1	790-B1
790-O	790-P1	790-R	790-T
790-V	790-Y	1013-B	1013-E
1013-G	1013-O	1013-P	1013-T
1013-Y			
Binding	½ yard	790-L	
Backing	3½ yards	1013-L	

Cutting Directions

Note: Read assembly directions before cutting patches. All measurements are cut sizes and include ¼" seam allowances. A fat ¼ is an 18" x 20"-22" cut. WOF designates the width of fabric from selvedge (approximately 42" wide).

21 Brights From each: (Read Step 1 before cutting.)

Cut (5-6) rectangles 5" x 8" (116 total)

Binding

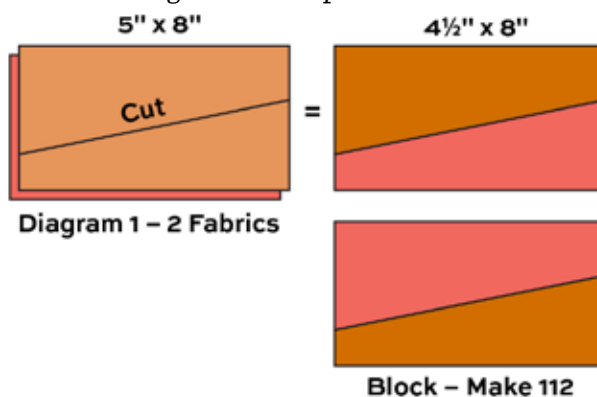
Cut (6) strips 2½" x WOF for binding

Backing

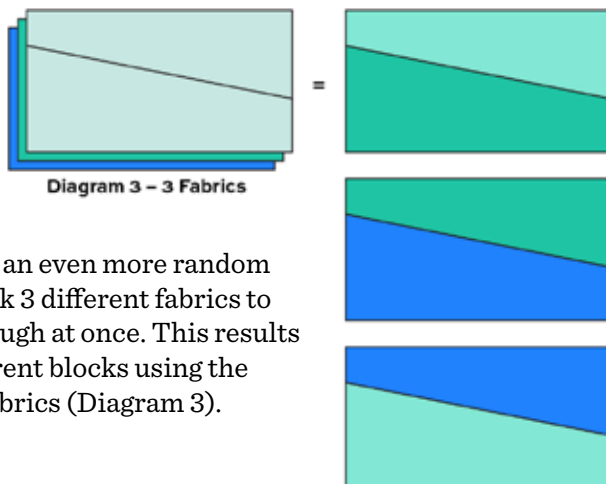
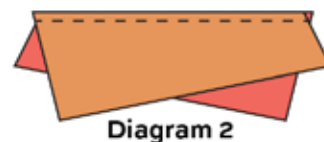
Cut (2) lengths 37" x 63", pieced to fit quilt top with overlap on all sides

Making the Quilt

- Each block finishes 4" x 7½", and is made with 2 wedge-shaped patches. Follow these directions for a quick and easy method of cutting. Select 2 bright rectangles that are close to each other on the color wheel. Place a long acrylic ruler on top of the rectangles, and make a diagonal cut across them as shown in Diagram 1. The angle doesn't matter, since you will be slicing through other pairs at different angles to obtain the randomness that is the charm of this quilt. The cut results in patches that fit together like a puzzle to make 2 blocks.



- Stitch the top patch of one fabric to the bottom patch of the second fabric (Diagram 2), joining them along the cut angled edges. Offset the patches so the line of stitching begins right where the fabrics crisscross as shown. Press the seam in one direction or open. The block should measure 4½" x 8". If it does not, adjust your stitching. Repeat with the remaining 2 patches. You now have 2 pieced blocks. Set them aside.



Hint: For an even more random look, stack 3 different fabrics to slice through at once. This results in 3 different blocks using the same 3 fabrics (Diagram 3).

Cobblestone Quilt

- Repeat Steps 1 and 2 to make more blocks. Vary the angle as you slice through the 2 or 3 layers of fabric. The greater the angle, the more dramatic the effect will be. Also, vary the position of the cut by making some closer to the middle and others slightly closer to the top and bottom edges of the fabric (Diagram) 4. Note that slight changes produce big visual differences in the final design. Make a total of 112 blocks.

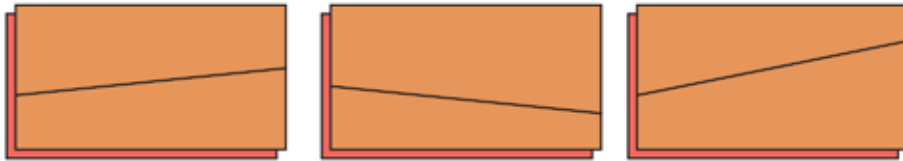


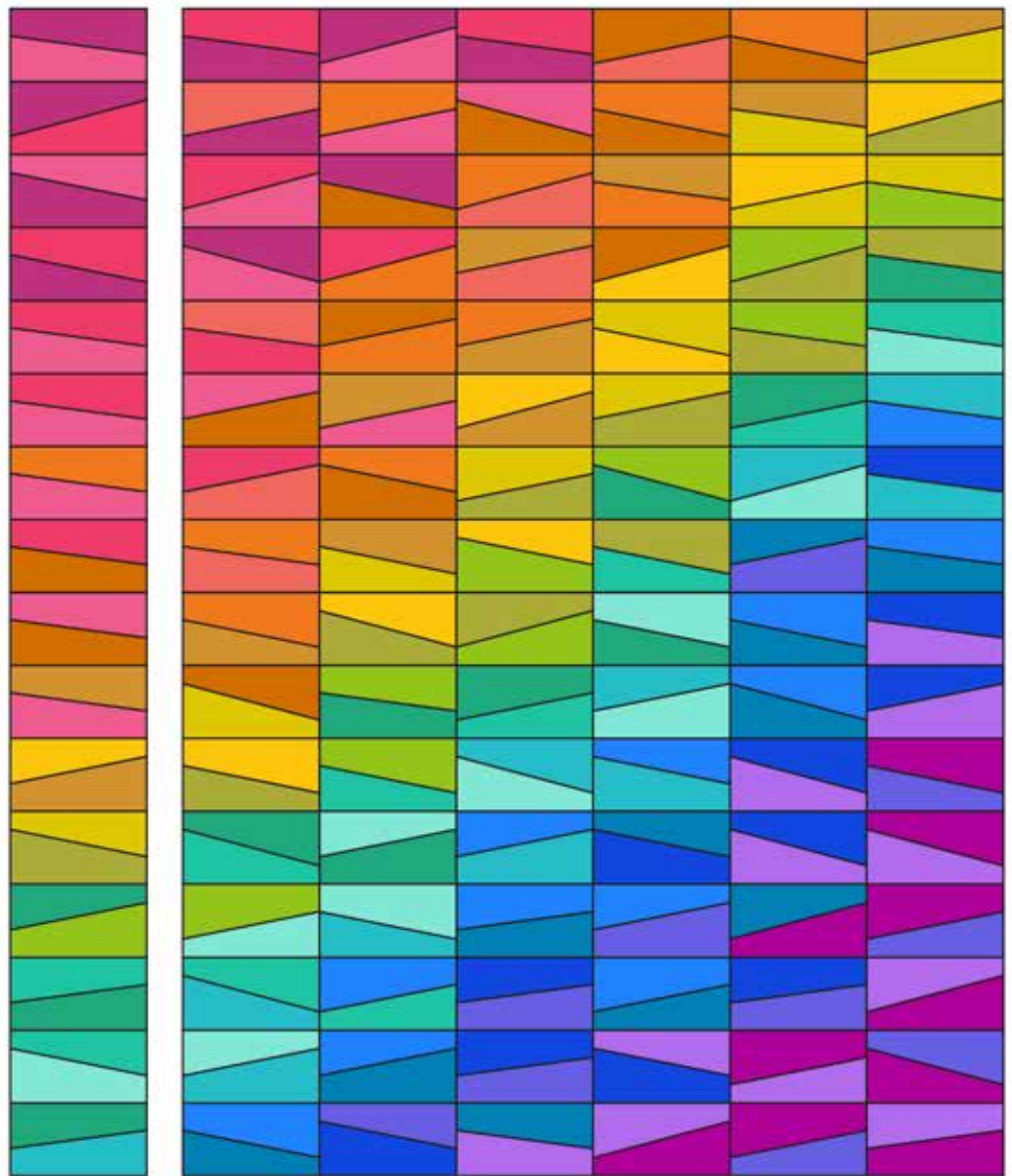
Diagram 4

- Referring to the Quilt Assembly and quilt photograph, arrange 16 blocks in each of 7 vertical columns in diagonal color gradation. Be sure that no fabric touches itself. Turn blocks upside down for variety. Stand back to look at the arrangement. Looking through a camera may alter how you want the colors to move. Take a digital photo to refer to as you sew. Once you are satisfied with the positioning of blocks, join them into columns, and then join the columns.

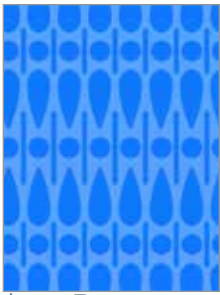
Finishing the Quilt

- Layer the quilt with batting and backing and baste. Quilt in the ditch around patches. Or, quilt an overall design. Bind to finish the quilt.

HINT: Yardage is sufficient enough to make a larger quilt: If you cut 8 rectangles from each of the 21 fat 1/4s, you can make a 60" x 84" quilt with 8 columns of 21 blocks each. Yardage for binding and backing would need to be larger.



Quilt Assembly



*672-B



672-C



*672-E



*790-B1



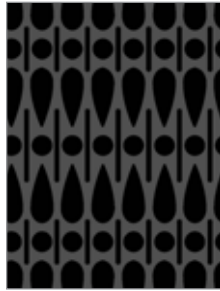
790-K



*790-L



*672-G1



672-K



*672-O



*790-O



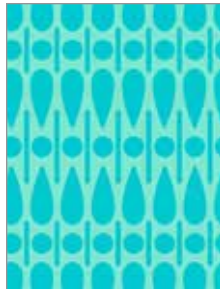
*790-P1



*790-R



*672-P1



*672-T



*672-Y1



*790-T



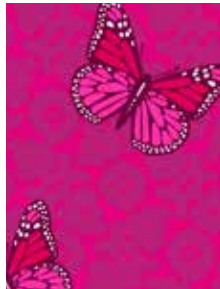
*790-V



*790-Y



*1013-B



*1013-E



*1013-G



1013-K



*1013-L



*1013-O



*1013-P



*1013-T



*1013-Y

Sun Print 2024 ALISON GLASS

*Indicates fabrics used in quilt pattern.
Fabrics shown are 50% of actual size.

Free Pattern Download Available

1384 Broadway, 24th Floor, New York, NY 10018

Tel. (800) 223-5678 • andoverfabrics.com

 andover : makower.uk