

# The Red Thread



**makower uk**

1384 Broadway  
New York, NY 10018  
(800) 223-5678

[www.andoverfabrics.com](http://www.andoverfabrics.com)



*Fabrics by Marisa and Creative Thursday™*

*"The Red Thread ties everything together. Growing up, my aunt in Germany told me the story of the red thread. How it runs through your life and ties everything together. You may not always see it going forward, but you can always see it looking backwards. When you trust life, and follow your heart, your life evolves exactly as it should in perfect timing and synchronicity. One moment and opportunity lead to the next and lead to the next. The European influence is also present in all of these designs, as I spent a part of every summer in Germany as a child. While following your red thread, it's always good to bring a little luck with you too -like a lucky mushroom, and a lucky lady bug {good luck charms in Germany}. This collection is intended to be a reminder that everything is working out, always."*

Quilt designed by  
Heidi Pridemore  
Quilt size: 66" x 78"

# The Red Thread Quilt

Introducing Andover Fabrics new collection: *The Red Thread* by Marisa and Creative Thursday™  
Quilt designed by Heidi Pridemore

## Fabric Requirements

		Yardage	
Fabric A	Grey Bunnies	7/8 yard	5902-C
Fabric B	Red Lines	3/8 yard	5910-R
Fabric C	White Ladybugs	2/3 yard	5908-L
Fabric D	Red Flowers	2/3 yard	5907-R
Fabric E	Red/Black Character	3/8 yard	5903-K
Fabric F	White Lines	3/4 yard	5910-L
Fabric G	Black Leaves	7/8 yard	5909-K
Fabric H	White Daises	2/3 yard	5905-L
Fabric I	Black Lines	3/8 yard	5910-K

Quilt finishes 66" x 78"

		Yardage	
Fabric J	Red Ladybugs	1 1/3 yards	5908-R
Fabric K	Red Daises	1/4 yard	5905-R
Fabric L	Red Birds	1/3 yard	5904-R
Fabric M	White Birds	1/4 yard	5904-L
Fabric N	White Flowers	1/4 yard	5907-L
Fabric O	Black Houses	1 1/3 yards	5906-K
Backing	Grey Daises	5 yards	5905-C
Fusible Web		1 yard	

## Cutting Directions

**Note:** Borders are cut the exact lengths required plus 1/4" seam allowances. WOF designates the width of fabric from selvedge to selvedge (approximately 42" wide).

**Fabric A** Cut (1) 14 1/2" wide x 26 1/2" high piece for the center panel as shown.

**Fabric B** Cut (7) 1 1/2" x WOF strips. Sub-cut into (2) 1 1/2" x 36 1/2", (4) 1 1/2" x 26 1/2" strips and (2) 1 1/2" x 16 1/2" strips.

**Fabric C** Cut (2) 5 1/4" x WOF strips. Sub-cut into (11) 5 1/4" squares and (2) 4 7/8" squares.  
Cut (1) 5 1/2" x WOF strip. Sub-cut into (3) 5 1/2" x 6 1/2" strips.

**Fabric D** Cut (2) 5 1/4" x WOF strips. Sub-cut into (11) 5 1/4" squares and (2) 4 7/8" squares.  
Cut (1) 6 1/2" x WOF strip. Sub-cut into (3) 6 1/2" x 8 1/2" strips.

**Fabric E** Cut (2) 2 1/2" x 38 1/2" strips.  
Cut (2) 2 1/2" x 30 1/2" strips.

**Fabric F** Cut (6) 3 1/2" x WOF strips. Sub-cut into (12) 3 1/2" x 6 1/2" strips and (48) 3 1/2" squares.

**Fabric G** Cut (4) 3 1/2" x WOF strips. Sub-cut into (24) 3 1/2" x 6 1/2" strips.  
*See instructions to cut (24) doors and (48) windows.*

**Fabric H** Cut (1) 9 1/2" x WOF strip. Sub-cut into (4) 9 1/2" squares.  
Cut one 5 1/2" x WOF strip. Sub-cut into three 5 1/2" x 6 1/2" strips.

**Fabric I** Cut (5) 1 1/2" x WOF strips. Sub-cut into (8) 1 1/2" x 11 1/2" strips and (8) 1 1/2" x 9 1/2" strips.

**Fabric J** Cut (7) 2 1/2" x WOF strips. Piece the strips together to make two 2 1/2" x 64 1/2" strips and two 2 1/2" x 56 1/2" strips.  
Cut (1) 6 1/2" x WOF strip. Sub-cut into (3) 6 1/2" x 8 1/2" strips.  
Cut (7) 2 1/2" x WOF strips for the binding.

**Fabric K** Cut (1) 6 1/2" x WOF strip. Sub-cut into (4) 6 1/2" x 8 1/2" strips.

**Fabric L** Cut (1) 8 1/2" x WOF strip. Sub-cut into (2) 6 1/2" x 8 1/2" strips.

**Fabric M** Cut (1) 5 1/2" x WOF strip. Sub-cut into (3) 5 1/2" x 6 1/2" strips.

**Fabric N** Cut (1) 5 1/2" x WOF strip. Sub-cut into (3) 5 1/2" x 6 1/2" strips.

**Fabric O** Cut (8) 5 1/2" x WOF strips. Piece the strips together to make (2) 5 1/2" x 68 1/2" strips and (2) 5 1/2" x 66 1/2" strips.

**Backing** Cut (2) 86" x 42" strips. Sew the strips together and trim to make (1) 74" x 86" backing piece.

# The Red Thread Quilt

## Center Panel

1. Sew one 1½" x 26½" Fabric B strip to each side of the 14½" x 26½" Fabric A strip. Sew one 1½" x 16½" Fabric B strip to the top and bottom of the Fabric A strip to make the 16½" x 28½" center panel.

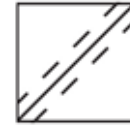


FIG. 1



FIG. 2

## First Pieced Border

2. Place one 4⅞" Fabric C square on top of one 4⅞" Fabric D square, right side together. Draw a line across the diagonal of the top square (Fig. 1). Sew ¼" away from each side of the drawn diagonal line (Fig. 1). Cut the two squares apart on the drawn diagonal line (Fig. 2) to make two 4½" half-square triangles (Fig. 3).
3. Repeat Step 2 with the remaining 4⅞" Fabric C and 4⅞" Fabric D squares to make two more 4½" half-square triangles for a total of four 4½" half-square triangle blocks for the border corners.
4. Repeat Step 2 with eleven 5¼" Fabric C squares and eleven 5¼" Fabric D squares to make twenty-two half-square triangles.



FIG. 3



FIG. 4

5. Trim the blocks to measure 4⅞" square.
6. Place one half-square triangle from Step 5 on top of another half-square triangle, right sides together. Make sure the center seam is going in the same direction on both half-square triangles and the Fabric C triangle in the top block is opposite from the Fabric C triangle in the bottom block (Fig. 4).



FIG. 5



FIG. 6 – make 22

7. Draw a diagonal line across the top half-square triangle so that it goes through the sewn seam. Sew ¼" away from both sides of the drawn line (Fig. 5). Cut on the drawn line to make two 4½" quarter-square triangles (Fig. 6).



FIG. 7 – make 2



FIG. 8 – make 2

8. Repeat Steps 6 and 7 to make twenty-two quarter-square triangle blocks total.
9. Sew together seven 4½" quarter-square triangle blocks to make one side border (Fig. 7). Repeat to make a second side border. Sew the borders to the center panel.
10. Sew together four 4½" quarter-square triangle blocks and two half-square corner blocks from Step 3 to make the top row (Fig. 8). Repeat to make the bottom row. Sew the borders to the center panel to make one 24½" x 36½" quilt top center.
11. Sew one 1½" x 36½" Fabric B strip to each side of the quilt top. Sew one 1½" x 26½" Fabric B strip to the top and bottom of the quilt top.
12. Sew one 2½" x 38½" Fabric E strip to each side of the quilt top. Sew one 2½" x 30½" Fabric E strip to the top and bottom of the quilt top. Quilt top should measure 30½" x 42½".

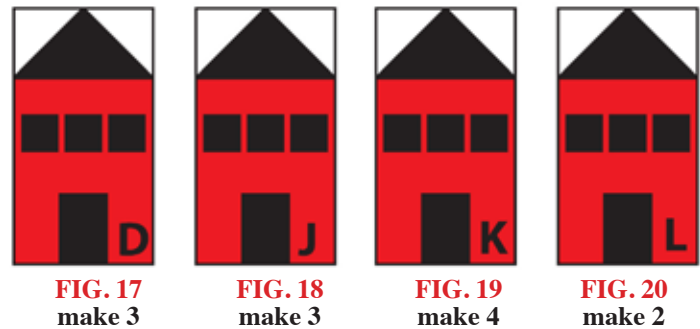
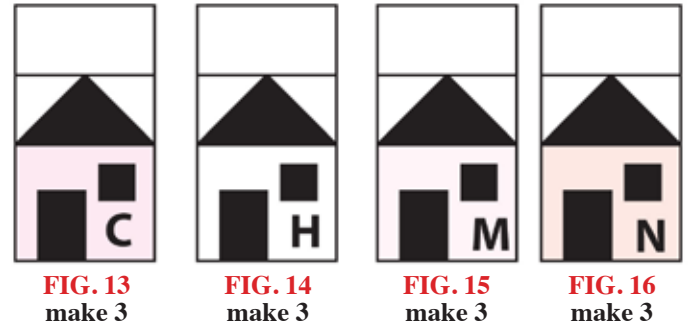
## House Blocks

13. Following the manufacturer's instructions, press fusible web to the wrong side of the remaining Fabric G fabric. Using a rotary cutter, ruler and mat to cut twenty-four 2" x 3" strips for the house doors and forty-eight 1½" squares for the house windows.
14. To make one roof unit, place one 3½" Fabric F square on the left side of one 3½" x 6½" Fabric G strip, right sides together (Fig. 9). Sew across the diagonal of the square from the upper right corner to the lower left corner (Fig. 9). Flip open the triangle formed and press (Fig. 10).

**Note:** pay attention to the direction of the lines on Fabric F triangle. Make sure the lines of the triangles on the roof unit match the direction of the 3½" x 6½" Fabric F strips. Trim away the excess fabric from behind the triangle leaving a ¼" seam allowance.

# The Red Thread Quilt

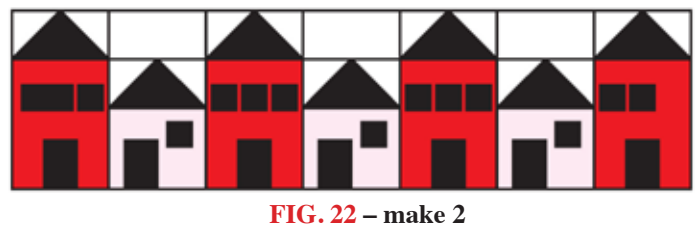
15. Place another 3½" Fabric F square on the right side of the 3½" x 6½" Fabric G strip, right sides together (Fig. 11). Sew across the diagonal of the square from the upper left corner to the lower right corner (Fig. 11). Flip open the triangle formed and press (Fig. 12). Trim away the excess fabric from behind the triangle leaving a ¼" seam allowance to make 3½" x 6½" roof block.
16. Repeat Steps 13 and 14 to make twenty-four roof blocks.
17. Sew one roof block to the top of one 5½" x 6½" Fabric C piece. Sew one 3½" x 6½" Fabric F strip to the top of the roof block. Press one door and one window to the Fabric C piece as shown (Fig. 13). Repeat to make three 6½" x 11½" Fabric C house blocks total.
18. Repeat Step 17 to make three Fabric H house blocks (Fig. 14), three Fabric M houses (Fig. 15) and three Fabric N house blocks (Fig. 16).
19. Sew one roof block to the top of one 6½" x 8½" Fabric D piece. Press one door and three windows to the Fabric D piece as shown (Fig. 17). Repeat to make three 6½" x 11½" Fabric D house blocks total.
20. Repeat Step 19 to make three Fabric J house blocks (Fig. 18), four Fabric K houses (Fig. 19) and two Fabric L house blocks (Fig. 20).
21. Finish all the door and window raw edges with a decorative stitch, such as a buttonhole or satin stitch.



## Quilt Top Assembly

Refer to the figures and quilt top layout for block placement to assemble.

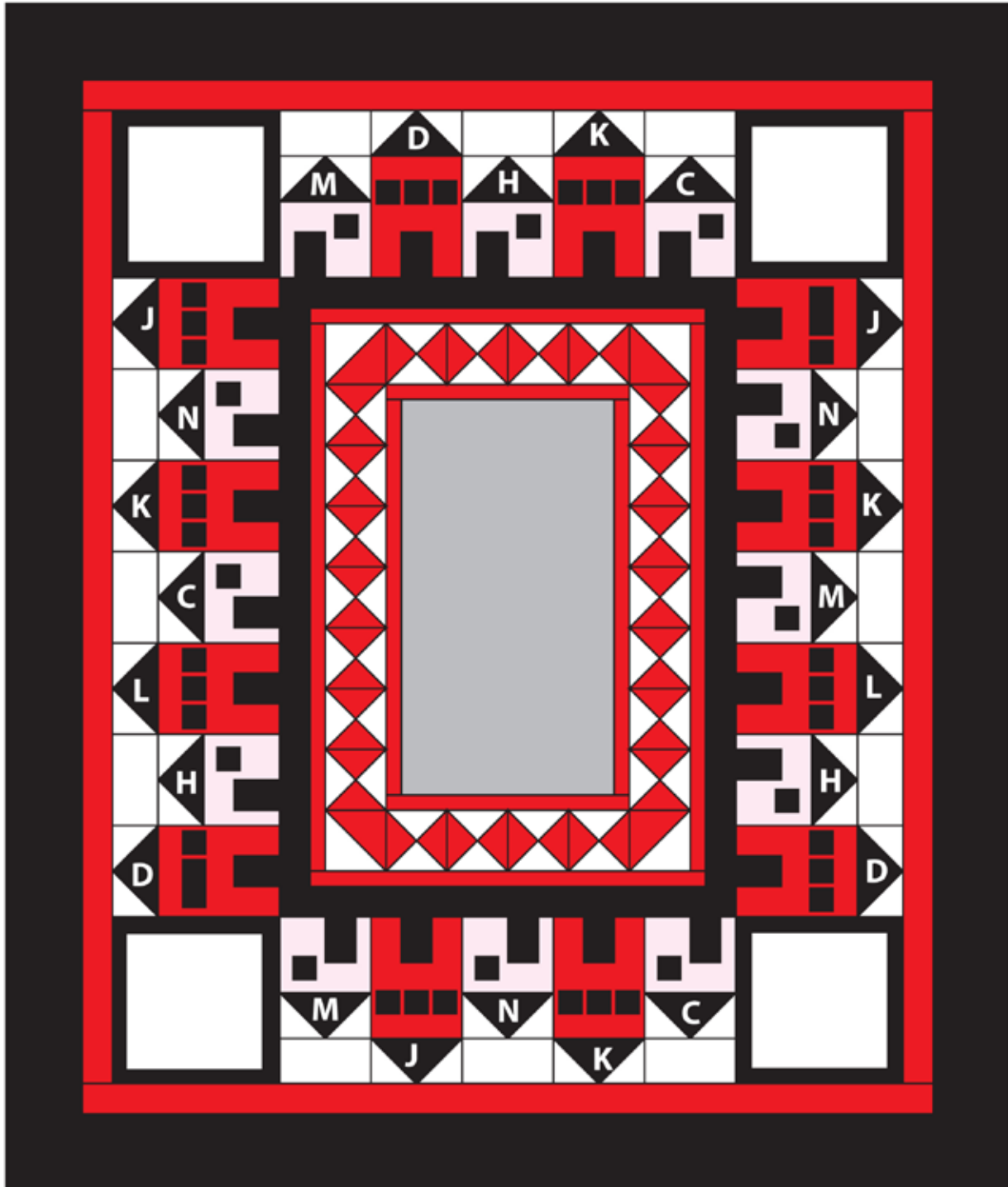
22. Sew one 1½" x 9½" Fabric I strip to each side of one 9½" Fabric H square. Sew one 1½" x 11½" Fabric I strip to the top and bottom of the 9½" Fabric H square to make one corner block (Fig. 21). Repeat to make four corner blocks total.
23. Sew together four assorted red house blocks and three assorted white house block to make one side border (Fig. 22). Repeat to make a second side border. Repeat to make a second side border. Sew the borders to the quilt top.
24. Sew together three assorted white house blocks, two assorted red house blocks and two corner blocks to make the top row (Fig. 23). Repeat to make the bottom row. Sew the borders to the quilt top. The quilt top should measure 52½" x 64½".
25. Sew one 2½" x 64½" Fabric J strip to each side of the quilt top. Sew one 2½" x 56½" Fabric J strip to the top and bottom of the quilt top.
26. Sew one 5½" x 68½" Fabric O strip to each side of the quilt top. Sew one 5-1/2" x 66½" Fabric O strip to the top and bottom of the quilt top.



# The Red Thread Quilt

## Finishing the Quilt

27. Layer and quilt as desired. Sew the seven 2½" x 42" Fabric J strips together end-to-end with a 45° seams to make the binding. Fold this long strip in half lengthwise with wrong sides together and press. Bind as desired.



Quilt Assembly Diagram

1384 Broadway  
 New York, NY 10018  
 (800) 223-5678  
 www.andoverfabrics.com

# The Red Thread

by Marisa and Creative Thursday™



makower uk\*



5902-R



5903-K\*



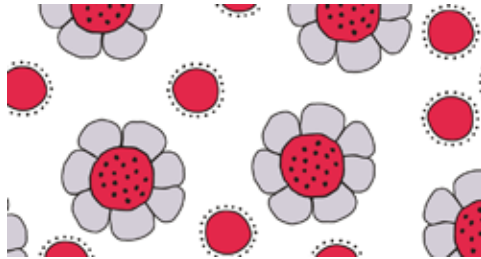
5906-K\*



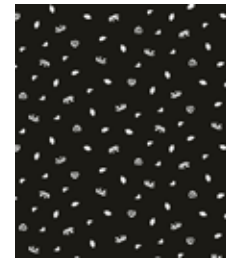
5907-L\*



5904-R\*



5905-L\*



5909-K\*



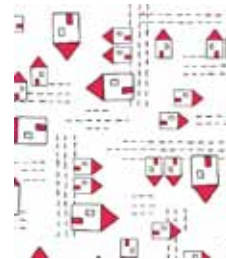
5910-R\*



5902-C\*



5903-L



5906-L



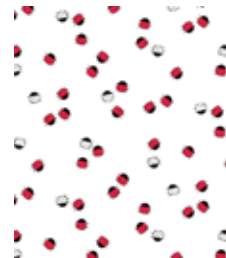
5907-R\*



5904-L\*



5905-R\*



5908-L\*



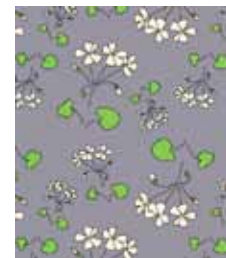
5910-L\*



5902-LR



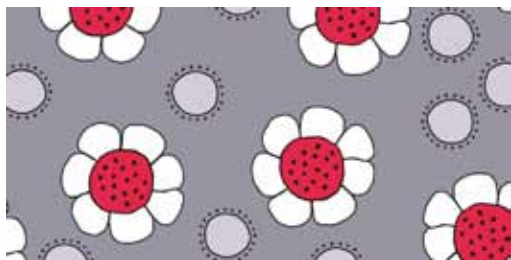
5903-LK



5907-C



5908-R\*



5905-C\*



5906-LR



5909-LR



5910-K

\*Indicates fabric used in quilt pattern. Fabrics shown are 20% of actual size.

Free Pattern Download Available at [www.andoverfabrics.com](http://www.andoverfabrics.com)

6/12/12