

The Very Hungry Caterpillar

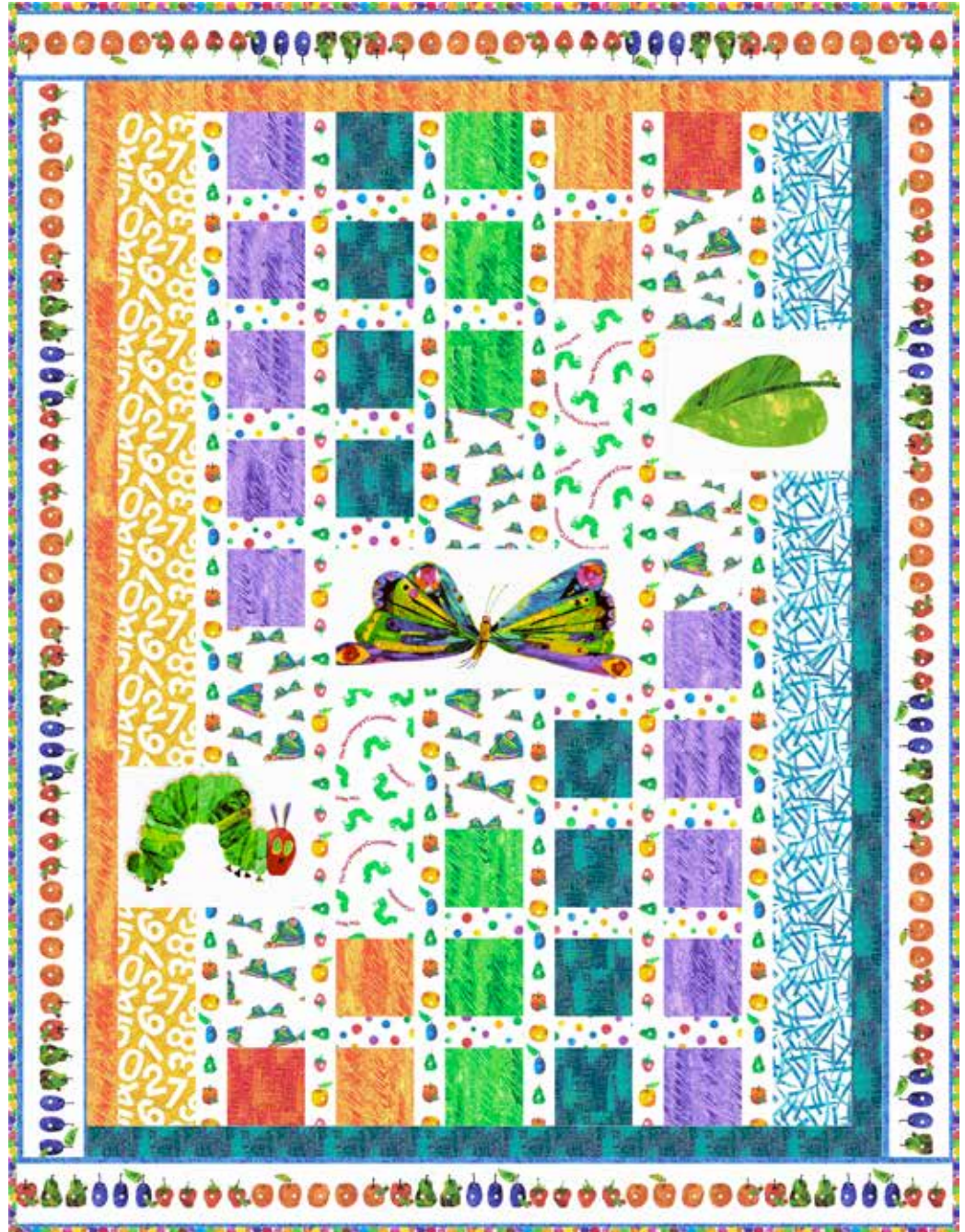
FABRICS BY ERIC CARLE, LLC



Growing Up Quilt Design:
Chris Hoover

Quilt Size: 60" x 78"

andoverfabrics.com



andover

makower uk
The Henley Studio

Free Pattern Download Available

1384 Broadway New York, NY 10018
Tel. (800) 223-5678 • andoverfabrics.com

Growing Up



Introducing Andover Fabrics new collection: **The Very Hungry Caterpillar** by Eric Carle, LLC

Quilt designed by Chris Hoover

Quilt finishes 60" x 78"

A fun grid of colored squares forms the background for the novelty panels that are based on Eric Carle's beloved children's book. Fussy-cutting the prints will ensure a successful outcome for this oh so easy to make quilt.

Cutting Directions

Note: Read assembly directions before cutting patches. All measurements are cut sizes and include 1/4" seam allowances. A fat 1/8 is a 9" x 20"-22" cut of fabric. Borders are cut the exact lengths required plus 1/4" seam allowances. WOF designates the width of fabric from selvage to selvage (approximately 42" wide).

Fabric A Fussy-cut (1) leaf 12 1/2" x 9 1/2"
Fussy-cut (1) butterfly 19 1/2" x 9 1/2"
Fussy-cut (1) caterpillar 12 1/2" x 9 1/2"

Fabric B Fussy-cut (2) side borders 5" x 69 1/2", cut lengthwise, centering the fruit in the middle of the strips
Fussy-cut (2) top/bottom borders 5" x 60 1/2", cut lengthwise, centering the fruit in the middle of the strips

Fabric C Cut (2) squares 5 1/2"

Fabric D Cut (2) rectangles 5 1/2" x 16 1/2"

Fabric E Cut (8) strips 2 1/2" x WOF for binding

Fabric F Cut (1) strip 5 1/2" x 42 1/2"
Cut (1) strip 5 1/2" x 14 1/2"

Fabric G Cut (1) strip 5 1/2" x 42 1/2"
Cut (1) strip 5 1/2" x 14 1/2"

Fabric H Cut (6) squares 5 1/2"

Fabric I Cut (10) squares 5 1/2"

Fabric J Cut (3) strips 2 1/2" x WOF, pieced to make the following:
(1) side border 2 1/2" x 65 1/2"
(1) top border 2 1/2" x 51 1/2"
Cut (4) squares 5 1/2"

Fabric Requirements

		Yardage	Fabric
Fabric A	setting	1 panel (2/3 yard)	3471-M
Fabric B	outer border	2 yards	3472-M
Fabric C	setting	fat 1/8 yard	3477-R
Fabric D	setting	1/4 yard	3473-G
Fabric E	binding	5/8 yard	3474-M
Fabric F	setting	3/8 yard	7237-XB
Fabric G	setting	3/8 yard	3475-Y
Fabric H	setting	1/4 yard	3476-G
Fabric I	setting	3/8 yard	3476-P
Fabric J	inner border	1/2 yard	3476-Y
Fabric K	inner border	5/8 yard	3477-B
Fabric L	setting	3/8 yard	7234-X
Fabric M	sashes	2 yards	7235-X
Fabric N	short sashes	3/8 yard	7236-X
Backing		3 3/4 yards	7233-X

Fabric K Cut (3) strips 2 1/2" x WOF, pieced to make the following:
(1) side border 2 1/2" x 65 1/2"
(1) bottom border 2 1/2" x 51 1/2"
Cut (8) squares 5 1/2"

Fabric L Cut (6) strips 5 1/2" x 9 1/2"

Fabric M Fussy-cut (11) strips 2 1/2" x WOF, centering fruit in each strip. Join strips as needed and cut the following:
(2) sashes 2 1/2" x 65 1/2"
(2) sashes 2 1/2" x 42 1/2"
(4) sashes 2 1/2" x 28 1/2"
(2) sashes 2 1/2" x 14 1/2"

Fabric N Cut (22) short sashes 2 1/2" x 5 1/2"

Backing Cut (2) panels WOF x 68", pieced to fit quilt top with overlap on all sides

Making the Quilt

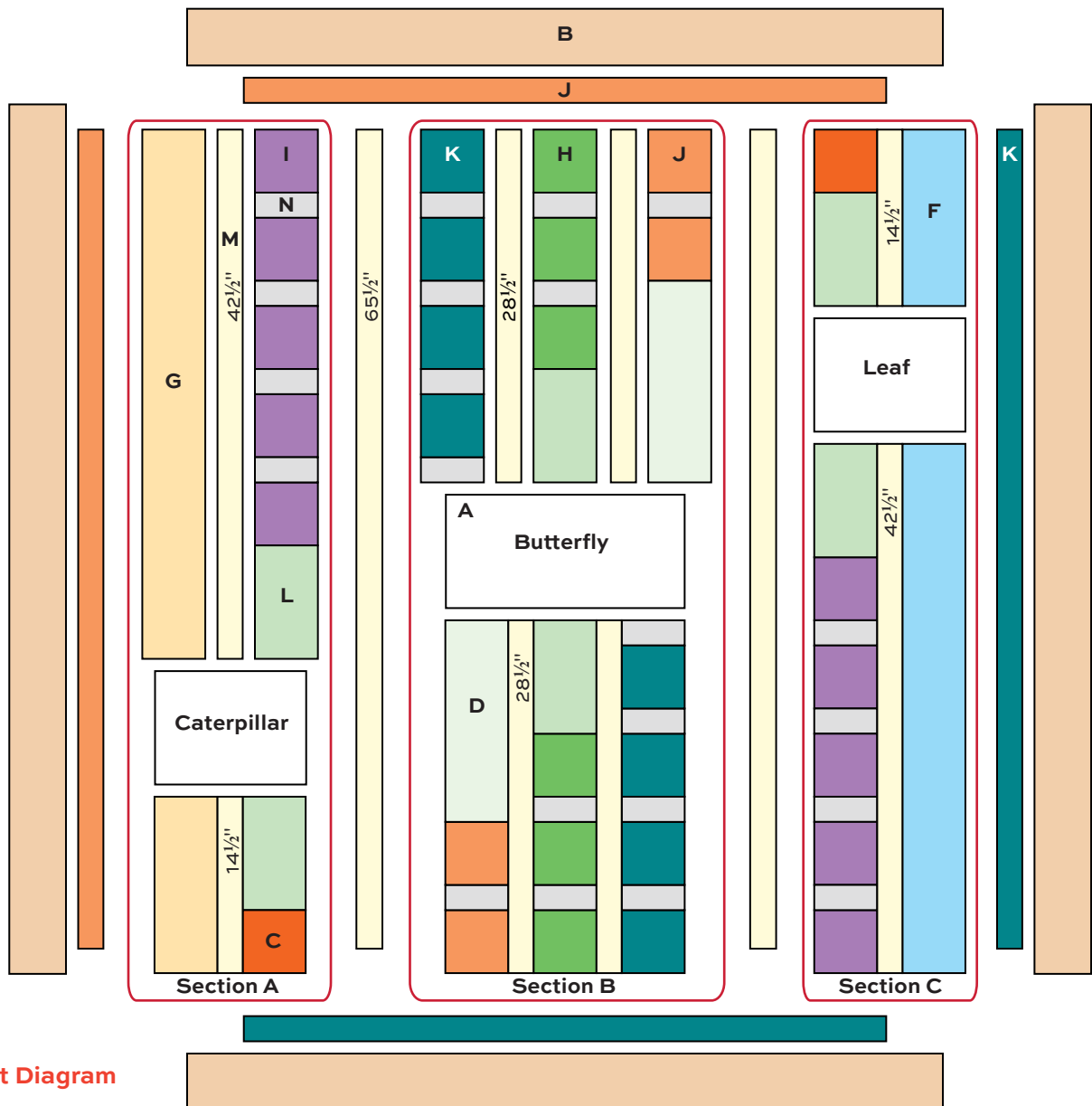
1. The quilt is made in units that are joined into 3 larger sections. Section A is the Caterpillar section, Section B is the Butterfly section, and Section C is the Leaf section. Each section is outlined in the Quilt Assembly Diagram. Refer to that as you make the quilt.

Growing Up Quilt

- Section A: Join 5 Fabric I squares and 4 Fabric N short sashes to make a vertical row. Sew a Fabric L rectangle to the bottom. Sew a Fabric M and a Fabric G strip to the left side of the pieced row. Make the bottom pieced unit by joining patches and strips as shown. Sew the Caterpillar panel between the 2 pieced units.
- Section B: Arrange pieces as shown for Section B in the diagram. Join parts to make the top half. Make the bottom half. Sew the Butterfly panel between the 2 halves.
- Section C: Arrange patches and strips to make units as shown in the diagram. Sew units together to make the top pieced unit and the bottom pieced unit. Sew the Leaf panel between the 2 pieced units.
- Sew the 3 sections together with Fabric M $65\frac{1}{2}$ " sashes between the sections as shown.
- Sew Fabric J and Fabric K borders to the quilt, sides on first. Sew Fabric B borders to the quilt.

Finishing the Quilt

- Layer the quilt top, batting and backing and baste. Quilt in the ditch around all patches. Quilt around the butterfly, caterpillar, and leaf, and around the printed motifs in the outer border. Sew binding strips together end to end. Bind to finish the quilt.



Quilt Diagram

The Very Hungry Caterpillar

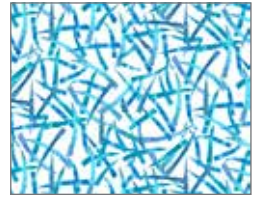
FABRICS © ERIC CARLE LLC



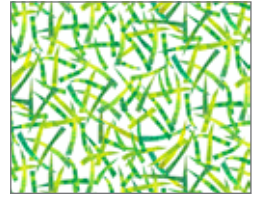
7232-X



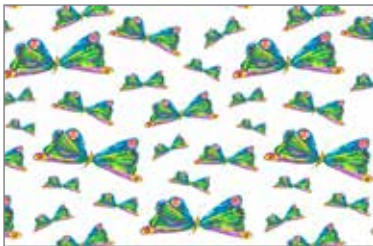
7233-X*



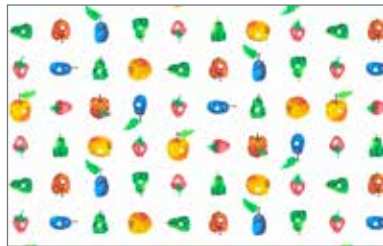
7237-XB*



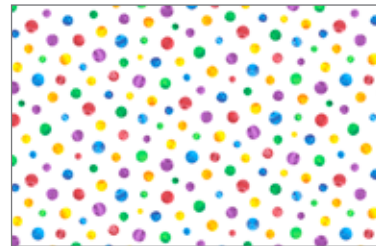
7237-XG



7234-X*



7235-X*



7236-X*



7237-XR



3473-G*
Also available in
flannel: F3473-G



5281-M



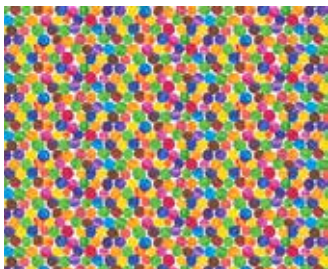
5282-M



3475-B



3475-G



3474-M*
Also available in
flannel: F3474-M



5283-M



3475-Y*

*Asterisk indicates fabric used in quilt pattern. Fabrics shown are 10% of actual size.

andover

makower uk
The Henley Studio

Free Pattern Download Available

1384 Broadway New York, NY 10018
Tel. (800) 223-5678 • andoverfabrics.com

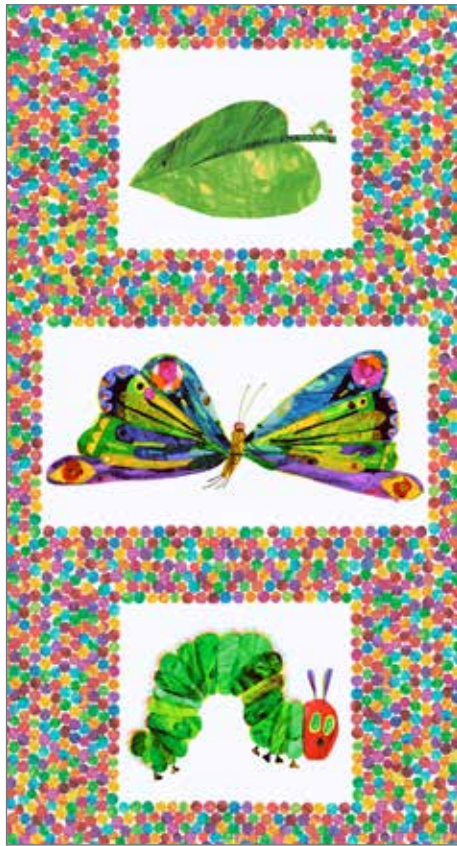
The Very Hungry Caterpillar

FABRICS © ERIC CARLE LLC

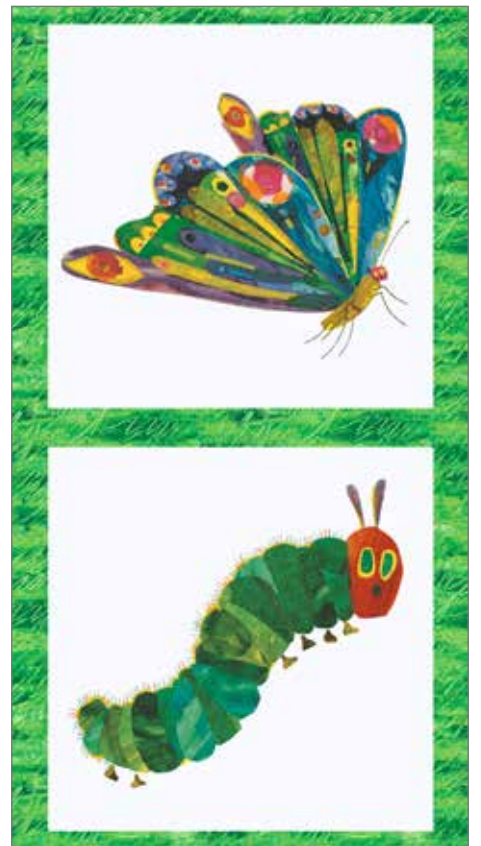
Fabrics shown are 10% of actual size.



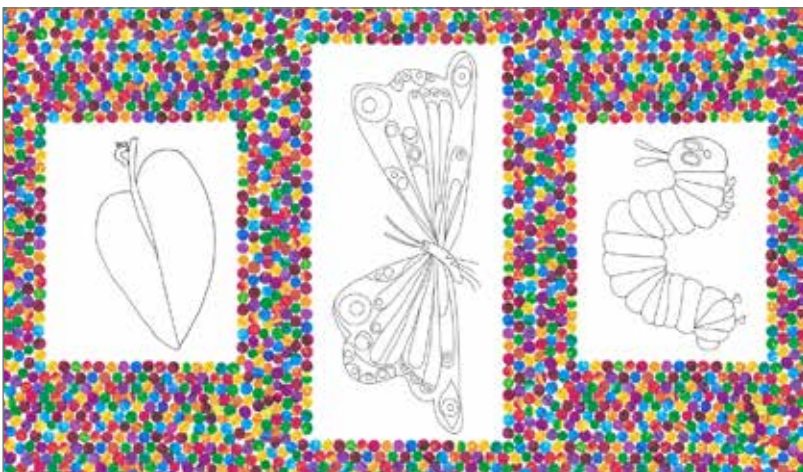
3472-M*



3471-M*



5280-M



5626-M



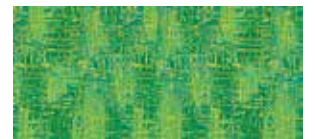
3476-G*



3477-B*



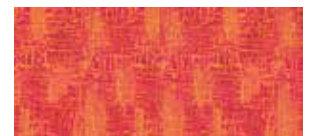
3476-P*



3477-G



3476-Y*



3477-R*

andover

makower uk
The Henley Studio

Free Pattern Download Available

1384 Broadway New York, NY 10018
Tel. (800) 223-5678 • andoverfabrics.com