

The Very Hungry Caterpillar

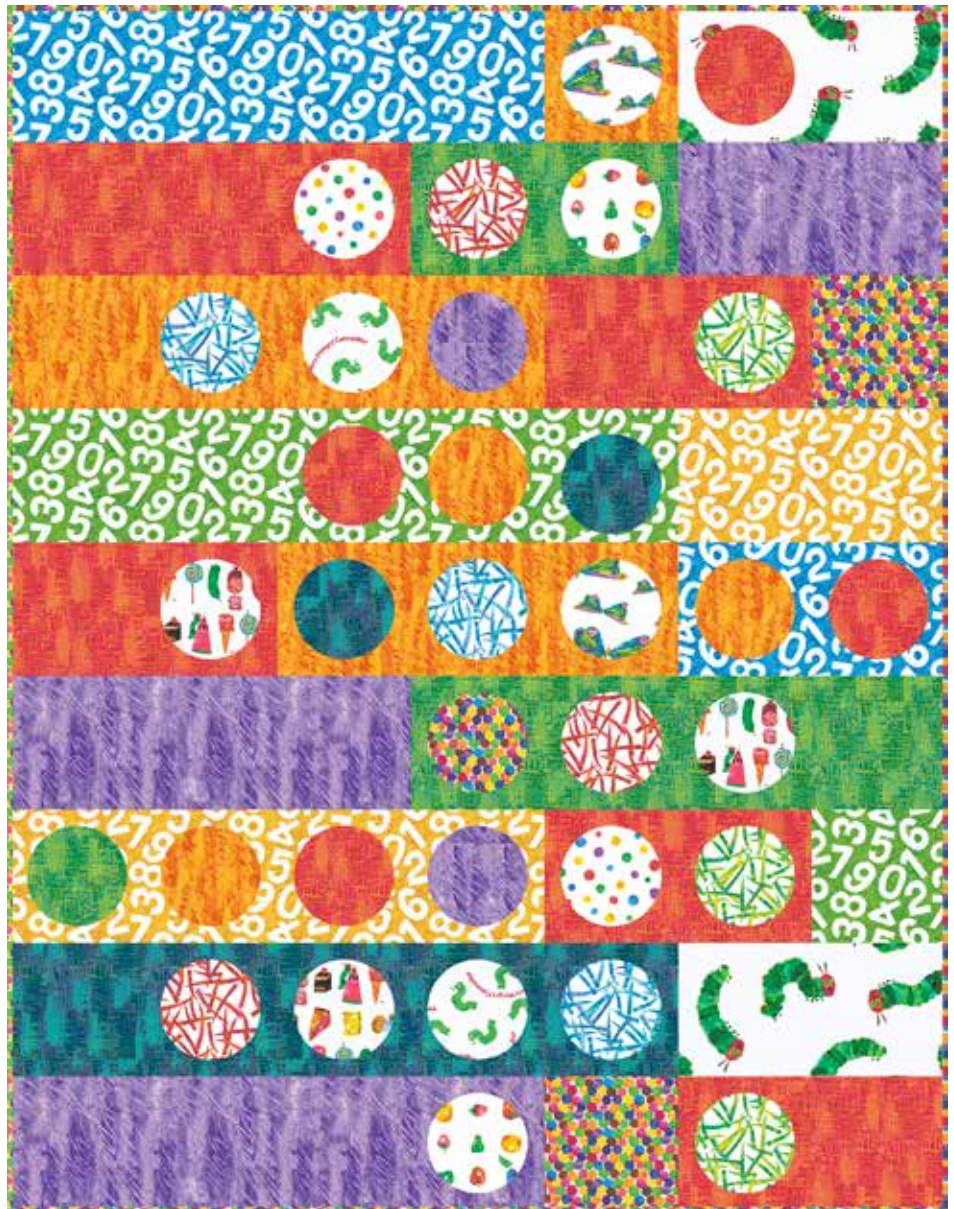
FABRICS BY ERIC CARLE, LLC



Roly-Poly Caterpillars
Quilt Design: **Jean Ann Wright**

Quilt Size: 56" x 72"

andoverfabrics.com



andover

•
•
•
•
•
makower uk
The Henley Studio

Free Pattern Download Available

1384 Broadway New York, NY 10018
Tel. (800) 223-5678 • andoverfabrics.com

Roly-Poly Quilt



Introducing Andover Fabrics new collection: **The Very Hungry Caterpillar** by Eric Carle, LLC

Quilt designed by Jean Ann Wright

Fabric Requirements

		Yardage	Fabric
*Fabric A	strips, circles	¾ yard	3474-M
Fabric B	strips	½ yard	3475-B
Fabric C	strips	½ yard	3475-G
Fabric D	strips	½ yard	3475-Y
Fabric E	strips, circles	¾ yard	3476-P
Fabric F	strips, circles	¾ yard	3476-Y
Fabric G	strips, circles	½ yard	3477-B
Fabric H	strips, circles	½ yard	3477-G
Fabric I	strips, circles	¾ yard	3477-R
Fabric J	strips	fat ¼ yard	5281-M
8 Fat ⅛'s	circles	fat ⅛ yard ea.	
	3473-G 5282-M	7234-X	7235-X
	7236-X 7237-XB	7237-XG	7237-XR
Backing		3¾ yards	7232-X

*includes binding

Quilt finishes 56" x 72"

Millions of children around the world have loved Eric Carle's classic book, The Very Hungry Caterpillar, for years. Whether the youngsters in your life know the book or not, they are bound to be intrigued by the clever novelty prints in this collection with its bright colors, food prints, butterflies, and more. Simple construction makes a background for the appliquéd circles. It couldn't be easier.

Cutting Directions

Note: Read assembly directions before cutting patches. All measurements are cut sizes and include ¼" seam allowances. A fat ⅛ is a 9" x 20"-22" cut of fabric. A fat ¼ is an 18" x 20"-22" cut. WOF designates the width of fabric from selvedge to selvedge (approximately 42" wide).

Fabric A Cut (7) strips 2½" x WOF for binding
Cut (2) squares 8½" x 8½"
Cut (1) circle with 6" diameter

Fabric B Cut (1) strip 8½" x 32½", cut crosswise
Cut (1) strip 8½" x 16½"

Fabric C Cut (1) strip 8½" x 40½"
Cut (1) square 8½" x 8½"

Fabric D Cut (1) strip 8½" x 32½"
Cut (1) strip 8½" x 16½"

Fabric E Cut (1) strip 8½" x 32½"
Cut (1) strip 8½" x 24½"
Cut (1) strip 8½" x 16½"
Cut (2) circles with 6" diameter

Fabric F Cut (1) strip 8½" x 32½"
Cut (1) strip 8½" x 24½"
Cut (1) square 8½" x 8½"
Cut (3) circles with 6" diameter

Fabric G Cut (1) strip 8½" x 40½"
Cut (2) circles with 6" diameter

Fabric H Cut (1) strip 8½" x 32½"
Cut (1) strip 8½" x 16½"
Cut (1) circle with 6" diameter

Fabric I Cut (1) strip 8½" x 24½"
Cut (4) strips 8½" x 16½"
Cut (4) circles with 6" diameter

Fabric J Cut (2) strips 8½" x 16½"

8 Fat ⅛'s From each:
Cut (2 or 3) circles with 6" diameter
(20 total)

Backing Cut (2) panels 40" x 64", pieced to fit quilt top with overlap on all sides

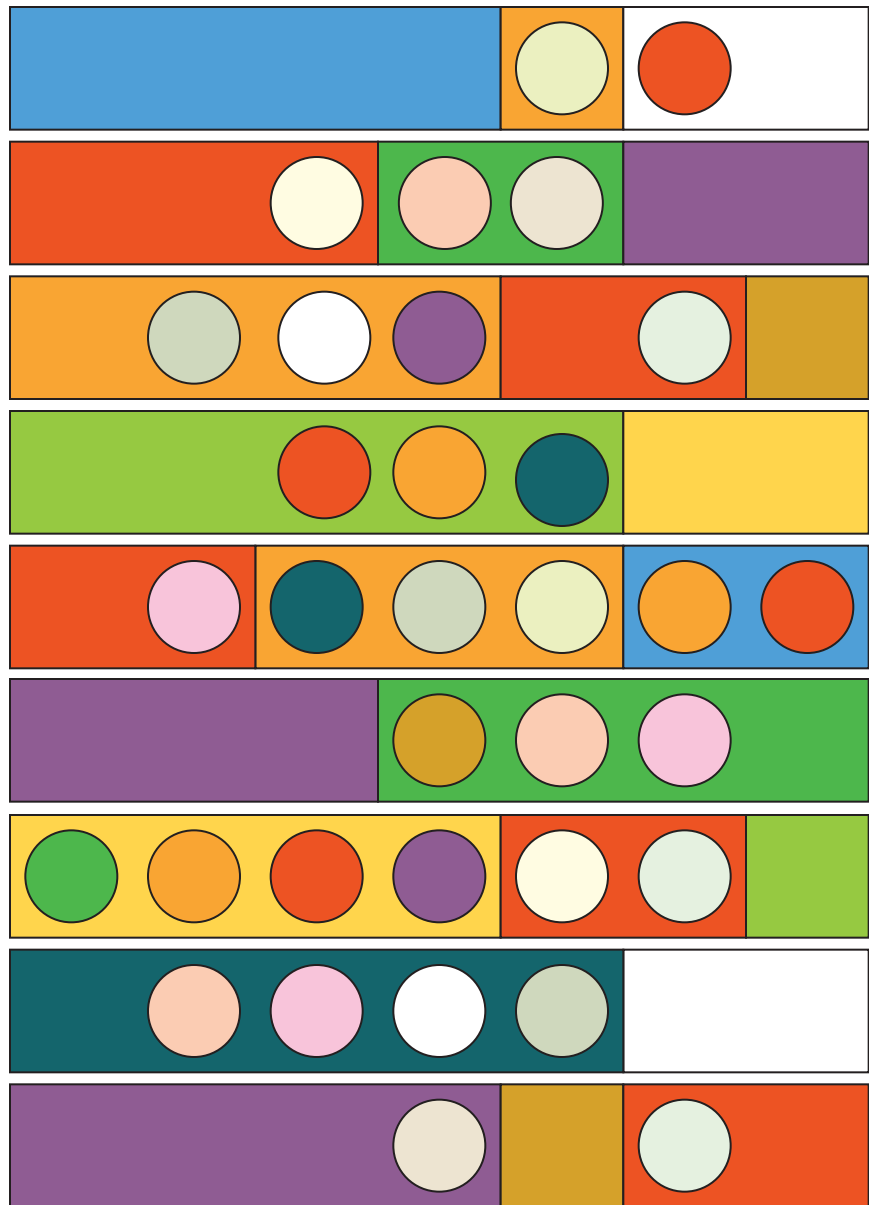
Roly-Poly Quilt

Making the Quilt

1. Refer to the Quilt Diagram for the following. Arrange the background strips into 9 horizontal rows as shown, following the diagram for color placement. Sew the patches in each row together. Join the rows to make the background.

2. If you choose to fuse the circles, draw 33 circles with a 6" diameter onto the paper side of paper-backed fusible web. Following manufacturer's instructions, fuse the traced circles to the wrong side of the appropriate fabrics. Cut out circles on the drawn lines. Refer to the Quilt Diagram to position the circles onto the background, and fuse following manufacturer's instructions. Finish the edges with a decorative machine stitch using contrasting thread, or use an invisible thread with a blind appliqué machine stitch

An alternative method is to cut 6" circles from freezer paper. Press each paper circle to the wrong side of a fabric, and cut out a fabric circle, adding a turn-under allowance beyond the paper pattern. Dab a bit of fabric starch in the allowance along the edge of the circle, fold the allowance over the paper, and press with an iron until dry. Remove the paper. Position each circle on the background, and hand stitch the edge or finish using a machine straight stitch.



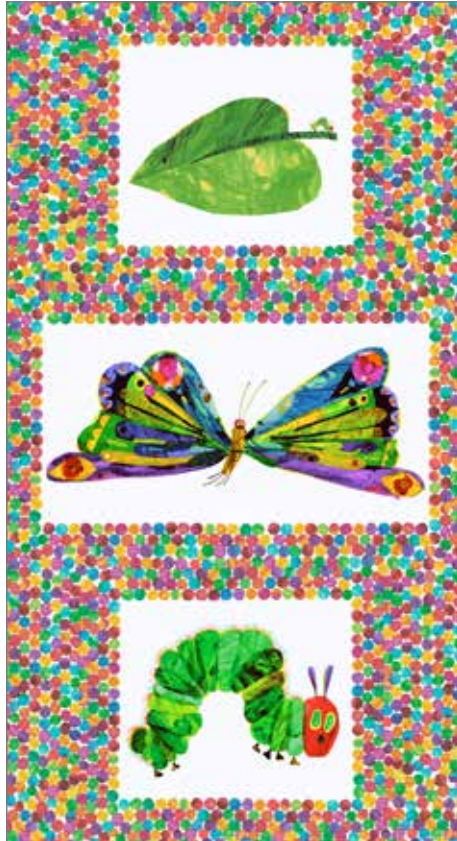
Quilt Diagram

Finishing the Quilt

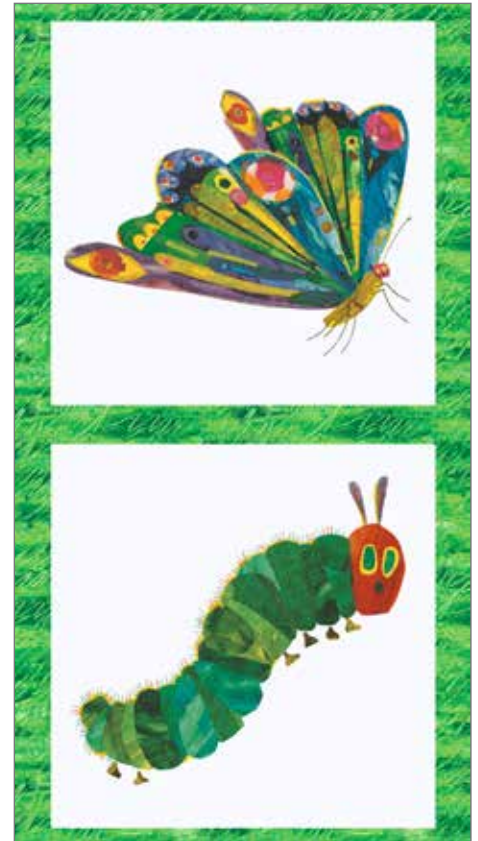
3. Layer the quilt with batting and backing and baste. Quilt in the ditch around strips and squares, and quilt around each circle. Quilt the background with an overall background filler stitch. Bind to finish the quilt.



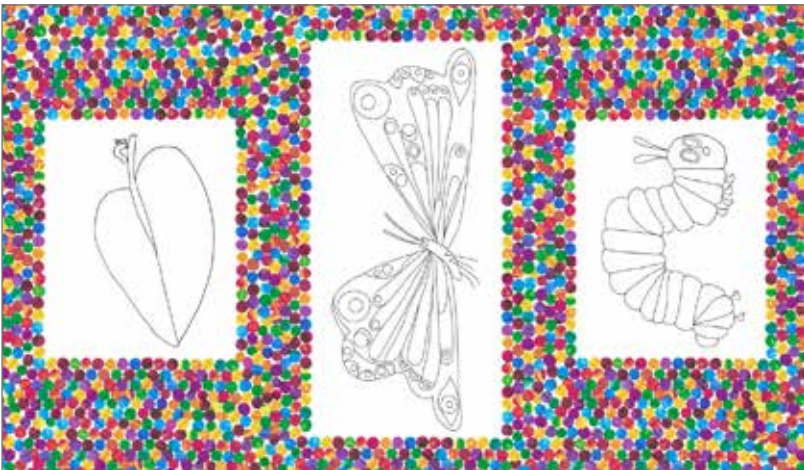
3472-M



3471-M



5280-M



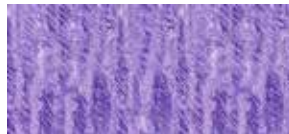
5626-M



3476-G



3477-B 1/2 yd



3476-P 3/4 yd



3477-G 1/2 yd



3476-Y 3/4 yd



3477-R 3/4 yd

The Very Hungry Caterpillar

FABRICS © ERIC CARLE, LLC

andover : makower uk
The Henley Studio



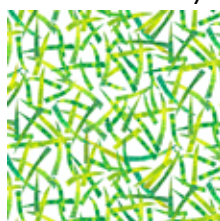
7232-X 3¾ yds (backing)



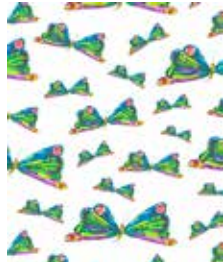
7233-X



7237-XB Fat ¼ yd



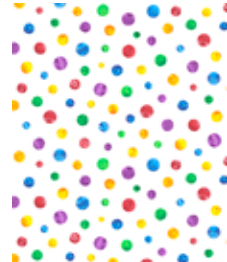
7237-XG Fat ¼ yd



7234-X Fat ¼ yd



7235-X Fat ¼ yd



7236-X Fat ¼ yd



7237-XR Fat ¼ yd

FABRIC	10 KITS	20 KITS	30 KITS
3474-M	1	1	2
3476-P	1	1	2
3476-Y	1	1	2
3477-R	1	1	2
FROM EACH	1	1	1
3473-G	3475-B	3475-G	3475-Y
3477-B	3477-G	5281-M	5282-M
7234-X	7235-X	7236-X	7237-XB
7237-XG	7237-XR		

BACKING

7232-X	3	5	8
--------	---	---	---

Yardage needed for backing:

3¾ YDS per kit



5281-M Fat ¼ yd



5282-M Fat ¼ yd



3475-B ½ yd



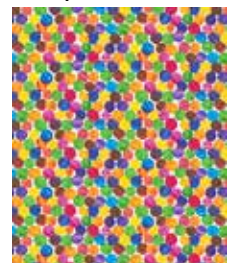
3475-G ½ yd



5283-M



3473-G Fat ¼ yd
Also available in flannel: F3473-G



3474-M ¾ yd (includes binding)
Also available in flannel: F3474-M



3475-Y ½ yd

Bolts needed to cut project kits.

15 yds = 1 bolt

Fabrics shown are 10% of actual size.

Fabrics used in quilt pattern are shown in black.

The Very Hungry Caterpillar

FABRICS © ERIC CARLE, LLC

andover : makower uk
The Henley Studio